

**This document contains:**

- The Event Covid-19 risk assessment and risk mitigation plan in accordance with the [FEI Policy for Enhanced Competition Safety during the Covid-19 Pandemic](#)
- The Event Approved Schedule

Given the current covid-19 situation, please note that the FEI's approval of a Schedule should not be taken as an absolute guarantee that the Event will definitely go ahead. The decision whether the Event can take place must be made by the OC and NF in close consultation with the applicable domestic government and public health authorities. It is the responsibility of each Participant to check the status of the Event prior to planning his/her travel to the Event.

## Risk assessment for COVID-19

*The questions below will enable OCs to review the additional considerations specific to sports, and thus inform their risk assessment of COVID-19 associated with their Event. This will help OCs understand and manage any additional risk from COVID-19.*

*The risk assessment should be reviewed and reassessed regularly during the planning phase and updated immediately prior to the transition to the operational phase, especially in light of the rapidly evolving nature of the outbreak. Reference should be made to the latest technical guidance and situation reports on the WHO website.*

*The risk assessment for COVID-19 associated with the Event must be coordinated and integrated with the host country's national risk assessment for COVID-19. The person completing the questionnaire should include input from the local public health authorities, consult WHO's latest technical guidance and ensure that there is an up-to-date evaluation of the epidemiological situation.*

**Please answer Yes (1) or No (0) to the following questions to determine a risk assessment score that incorporates factors specific to sporting events**

<b>Additional risk of COVID-19 to the sporting event</b>	<b>Yes (1)/No (0)</b>	<b>Score</b>
<b>Will the event be held in a country that has documented active local transmission of COVID-19 (community spread)?</b>	1	1
<b>Will the event be held in a single venue or multiple venues/cities/countries?</b> <i>(single venue = 0; multiple venues = 1)</i>	0	0
<b>Will the event include international participants (athletes and spectators) from countries that have documented active local transmission of COVID-19 (community spread)?</b> <i>(NB: if the Events does not involve spectators, please clarify this in the comments to the questions in relation to spectators in the "Mitigation Checklist" sheet)</i>	1	1
<b>Will the event include a significant number of participants (athletes or spectators) at higher risk of severe COVID-19 disease (e.g., people over 65 years of age or people with underlying health conditions)?</b>	0	0
<b>Will the event include sports that are considered at higher risk of spread for COVID-19 (eg, contact sports)?</b>	0	0
<b>Will the event be held indoors?</b> <i>(Yes = 1; No = 0)</i>	0	0
<b>Total COVID-19 risk score</b>		<b>2</b>

## Mitigation checklist for COVID-19

Mitigation measures assess the current effort and planning to reduce the risk of spread of COVID-19 disease for the event. As mitigation measures can reduce the overall risk of the sporting event contributing to the spread of COVID-19, they should be taken into account after the risk assessment has occurred to gain a clearer understanding of the overall risk of transmission and further spread of COVID-19, should the event be held. Together with the risk assessment score, the mitigation measure will contribute to the decision matrix and influence the assessment of the overall risk of transmission and further spread of COVID-19 in relation to the event.

Topic	Key consideration	Score Yes/Completed (2), Maybe/In progress (1), No/Not considered (0)	Weighting	Total score	Comments
Understanding of the overview of the current COVID-19 situation by the OC	Have the relevant OC and responsible staff been informed about the <b>latest available guidance on the COVID-19 outbreak</b> (official web resources available from WHO, CDC, ECDC, UN, local public health authorities)? And are the OC and staff concerned committed to following the available guidance?	2	1	2	
	Is the OC aware of global and local daily situation reports as provided by WHO or local public health authorities?	2	1	2	
	Do the OC and responsible staff understand the risks and transmission routes of COVID-19, the steps that Event attendees can take to limit spread, the recognized best practices (including respiratory etiquette, hand hygiene, physical distancing, etc.), and the travel restrictions adopted by different countries that may affect the Event?	2	1	2	
Event emergency preparedness and response plans	Has a <b>contingency medical response plan for COVID-19</b> been developed for the Event?	2	3	6	
	Does the contingency medical response plan include <b>information about how attendees should interact with the host country healthcare system</b> (e.g. hotline/helpline telephone number, medical teams and first-aid points for the Event, local health care system)?	2	3	6	
	Is there an <b>Emergency COVID-19 Outbreak Response Coordinator/Team</b> in the OC or other structure structure for the Event with defined roles and responsibilities, coordinating the health preparedness and response planning for the outbreak?	2	2	4	
	Has the host country or OC requested <b>support from WHO and/or local public health authorities</b> ?	2	3	6	
	<b>Has the OC acquired the following supplies to help reduce the risk of transmission of COVID-19?</b>				
	Personal protective equipment (e.g. masks, gloves, gowns) for onsite medical personnel	2	3	6	

Hand sanitizer and alcohol rubs/gels, tissues, frequently replaced soap canisters and closed bins for safe disposal of hygienic materials (e.g. tissues, towels, sanitary products) in washrooms and changing rooms	2	3	6	
Hand sanitizers and alcohol rubs for all entrances and throughout the venue	2	3	6	
<b>If a person feels unwell/ shows symptoms of an acute respiratory infection during the Event:</b>				
Is there a procedure for athletes or spectators to clearly identify <b>whom to contact and how to do so</b> if they or other Event participants feel unwell?	2	3	6	
Is there a protocol on whom the OC should contact in the host country to report suspected cases and request testing and epidemiological investigations?	2	3	6	
Are <b>first-aid services or other medical services</b> in-place and equipped to support patients with respiratory symptoms?	2	2	4	
Are there <b>isolation rooms or mobile isolation units</b> available onsite?	2	2	4	
Are there any <b>designated medical facilities</b> that manage patients with COVID-19 infection in the host country?	2	2	4	
Are there <b>transportation services with trained medical professionals</b> available to transport critically ill patients with severe acute respiratory infections to a hospital or to evacuate them from the host country, if necessary?	2	2	4	
Has a <b>cleaning schedule</b> been developed to ensure the venue is clean and hygienic – wiping surfaces and any equipment regularly with disinfectant is strongly recommended (before, during and after the event and between each round of competition)?	2	3	6	
Are there established <b>screening measures</b> , including temperature checks in place for participants at the point of entry, venues, routes and on-site medical facilities (first-aid points)? (Please specify in Comments what these screening measures include)	2	3	6	
Is the host country conducting COVID-19 <b>laboratory diagnostic tests</b> ? (If Yes, please specify in comments the type of COVID-19 diagnostic test used)	2	3	6	
Does the host country have a <b>national public health emergency preparedness and response plan</b> that can address severe respiratory diseases, including COVID-19?	2	2	4	
Is there a <b>preliminary agreement by the host country to provide care</b> for any COVID-19 cases connected with the Event?	2	3	6	
If the Event is for a duration of 14 days or longer, does the medical response plan for the event include resources and protocols for managing all public health interventions that would be necessary and supporting the national public health authorities if participants are infected and become unwell at the Event? (If the event is for less than 14 days, please score 0)	0	3	0	
If the Event is for less than 14 days, does the medical response plan include protocols for OCs to notify all participants of possible exposure to COVID-19 if the OCs are made aware of any suspected or confirmed cases that attended the Event? (If the event is for 14 days or longer, please score 0)	0	3	0	

Stakeholder and partner coordination	Is there an established mechanism for collaboration and coordination between <b>the health and security sectors</b> , which is considered as crucial?	2	2	4	
	Are there agreed, clear and easily understood processes in place for <b>reporting to external multi-sectoral stakeholders</b> (including surveillance authorities, WHO, CDC, ECDC, etc.) and disseminating risk communication messages (Media)?	2	2	4	
Command and control	Is there a decision-making authority/body and an agreed procedure to <b>modify, restrict, postpone or cancel the Event</b> related to the evolving COVID-19 outbreak?	2	3	6	
	Are there arrangements to activate a <b>strategic health operations centre</b> if there are suspected COVID-19 cases in connection with the Event?	0	2	0	
	Have the OC and staff undergone training and exercises on personal safety procedures and emergency mitigation measures (including those specifically listed in this checklist)?	2	3	6	
Risk communication	Is there a <b>risk communication strategy</b> for the Event in regard to COVID-19?	2	3	6	
	Is there a <b>designated person(s) to lead media</b> activities and tasked with managing all external communications with national and international government officials, the general public, and the media? (If yes, please identify the spokesperson in comments)	2	2	4	
	Has there been <b>monitoring of national and international media and social media</b> established for <b>rumours</b> to be able to counter them early? (Please explain in the comments what protocols are in place for counter messaging)	2	2	4	
	Has coordination been set up with major official media channels and social media sites such as Twitter, Facebook and Instagram so that messaging can be coordinated with, and assisted by, the platforms to provide targeted messaging from OCs (including messaging to counter fake news and rumours, and proactive messaging about the status of the sporting event, including changes)?	2	2	4	
Public health awareness of COVID-19 before and during the event	Has <b>public health advice</b> on clinical features of COVID-19, preventive measures, especially respiratory etiquette, hand hygiene practices, and physical distancing, been shared with all staff involved in the Event, athletes, the public, and personnel of all relevant stakeholders?	2	3	6	
	Has information on the <b>at-risk populations</b> been provided to all athletes, the public and others so they may make an informed decision on their attendance based on their personal risks?	2	3	6	
	Has public advice included information on the meaning of the following <b>measures: quarantine, self-isolation and self-monitoring</b> ?		2	0	
Surge capacity	<b>Are there any surge arrangements in place in the event of a public health emergency during the Event - (i.e. suspected and confirmed cases of COVID-19?</b>				
	Do these surge arrangements include funding for mitigation measures?	2	3	6	
	Do these surge arrangements include stockpiles of equipment (e.g. personal protective equipment, etc.)	2	3	6	
	Do these surge arrangements include training of extra staff?	2	2	4	
	Do these surge arrangements include volunteers?	0	2	0	

Specific mitigation measures	Will there be <b>daily health checks</b> of athletes/competitors?	2	2	4	
	Will the <b>athletes be separated from other groups</b> , such as officials, support staff and spectators, to limit transmission?	2	2	4	
	Are there measures in place to <b>limit the sharing of equipment, water bottles, towels</b> , etc.?	2	3	6	
	Will athletes be given closed <b>containers to allow for the safe disposal or storing of all hygienic materials</b> (e.g. tissues, towels, etc.)?	0	3	0	
	Will the Event have <b>designated seating</b> for all spectators?	2	3	6	
	Does the designated <b>seating provided allow for physical distancing</b> between spectators (minimum of 1 metre)?	2	2	4	
	Have <b>pre-travel health checks</b> been performed on all athletes to ensure underlying co-morbidities, medications, allergies, etc. are documented?	0	2	0	

Sum of mitigation measures	192
<b>Total mitigation score (%)</b>	<b>87</b>

192

## Event overall risk score

The decision matrix takes the risk score and the mitigation score to provide a colour determination. This colour determination identifies the total risk of transmission and further spread of COVID-19 in relation to the Event. The "Colour Determination" key below the decision matrix describes the total risk for each colour.

Total COVID-19 risk score (from "Risk Assessment" Tab)	2
--	---

Total mitigation score (from "Mitigation Checklist" Tab)	87
--	----

## Risk Vs. Mitigation Matrix

Total Risk Assessment Score	Very Prepared to Mitigate COVID-19 Impacts (76-100)	Somewhat Prepared to Mitigate COVID-19 Impacts (51-75)	Somewhat Unprepared to Mitigate COVID-19 Impacts (26-50)	Very Unprepared to Mitigate COVID-19 Impacts (0-25)
0 - Negligible	Very low	Very low	Very low	Very low
1 - Very Low Risk	Very low	Very low	Low	Low
2 - Low Risk	Low	Low	Low	Moderate
3 - Moderate Risk (low-moderate)	Low	Moderate	Moderate	Moderate
4 - Moderate Risk (high-moderate)	Moderate	Moderate	High	Very High
5 - High Risk	High	High	Very High	Very High
6 - Very High Risk	Very High	Very High	Very High	Very High

KEY FOR COLOUR DETERMINATION OF OVERALL RISK	
VERY LOW	Overall risk of transmission and further spread of COVID-19 in relation to the Event is considered <u>very low</u> .
LOW	Overall risk of transmission and further spread of COVID-19 in relation to the Event is considered <u>low</u> . Recommend checking whether mitigation measures can be strengthened.
MODERATE	Overall risk of transmission and further spread of COVID-19 in relation to the Event is considered <u>moderate</u> . Recommend <u>significant</u> efforts to improve mitigation measures or reduce risk of transmission (decrease risk assessment score).
HIGH	Overall risk of transmission and further spread of COVID-19 in relation to the Event is considered <u>high</u> . Recommend <u>significant</u> efforts to improve <u>both</u> mitigation measures and reduce risk of transmission (decrease risk assessment score).
VERY HIGH	Overall risk of transmission and further spread of COVID-19 in relation to the Event is considered <u>very high</u> .



# RISK MITIGATION PLAN

**Sopot Horse Trails  
Sopot 02-05.09.2020**





# Introduction

- Due to Covid-19 pandemic, we kindly ask you to familiarize with this document to minimise risk of infection.
- Despite following these Guidelines that are to reduce to minimum risk of infection with Covid-19 during the competition this risk is not eliminated.
- Every Participant of the event is obliged to familiarize with these Guidelines. Negligence of acknowledgment of the Guidelines doesn't relive from the duty of following the rules.
- All the Participants of the event (excluding Organiser's employees) are taking part voluntarily and on their own responsibility.
- All Participants are required to comply with the rules of social coexistence and conduct in accordance with applicable law and regulation of these Guidelines and other regulations in force in the competition established by the Organiser.
- All who decide to take part in the event (in any role) and are allowed to participate in the event by Organiser during the pandemic are doing so at their own risk.
- The Organising Committee doesn't take any responsibility for infection with Covid-19 of anyone taking part in the event.



# Participant of the event

A Participant of the event is a person whose presence on the showground is essential for the sports competition, in particular:

- Competitor
- Supporting personnel- trainer, groom, horse owner and responsible person of a minor athlete
- Person responsible for horse transport
- Official
- Event staff
- Security staff
- TV operators
- Media representatives
- Spectators



# Restrictions of participation

The following restriction of participation in the event must be followed:

- The event takes place with limited number of spectators - in accordance with current regulations in Poland.
- Only healthy individuals with temperature less than 37.5 °C from the accredited list will be given access to the showground
- Press Office will work only as remotely (online). The number of Press Office Staff will be limited.
- The Organiser is going to issue limited number of PRESS and PHOTO accreditations - one per editorial office /except Official photographers of Organiser and FEI/..



# The procedure of entering the showground

- All the Participants of the event are entering the showground using only the entry or gate specified by Organiser. There's a clearly marked on the map control point located at the gate.
- At the control point, Security Staff checks and verify all the participants from the list provided by National Federation, does a health interview and measures the temperature.
- A measurement of the temperature is an obligatory procedure and it's anonymous. 4. If temperature is greater than 37.5 degrees C the person cannot enter the venue
- Refusing to follow the procedure of taking the temperature results denning the access to the showground.
- During the control procedure, Security Staff has a right to: a) Ask for an ID document b) Ask to leave the vehicle
- Each Participant given the access the showground will be marked with a wristband.
- In case of any health issues reported by any Participant Security staff will not give an access to the showground and will inform the Organiser and Medical Staff.
- Each Participant is responsible for going through the control point and the procedure of entering the showground to get the wristband for the day.
- Entering the showground without the wristband will result with an admin charge 100 EUR and in case of repeated violation of the rules expelling from the showground.



# Security on the showground

1. Each of the Participants must :
  - a) Cover, mask, shield or protective hat the mouth and nose unless there's a 1,5 m distance from other Participants in the same space; this rule excludes an Athlete sitting on the horse;
  - b) Systematic sterilising hands at the stations located in toilets area, show office, competition zone, stables.
2. The Organiser will assign a Steward who with cooperation with the Organiser will coordinate and supervise the security system especially the logistic of Participants, access to sanitizers, covering mouth and nose by Participants
3. All the rooms used during the event will be disinfected after each day of the event.

The most common symptoms of Covid-19 are fever, dry cough, and tiredness. Other symptoms that are less common and may affect some patients include aches and pains, nasal congestion, headache, conjunctivitis, sore throat, diarrhoea, loss of taste or smell or a rash on skin or discoloration of fingers or toes. These symptoms are usually mild and begin gradually (Source: WHO website: <https://www.who.int/emergencies/diseases/novelcoronavirus-2019/question-and-answers-hub/q-a-detail/q-a-coronaviruses>) and the Participants must immediately: 1. Go to the assigned by the Organiser isolation space. 2. Call the Organizer on 0048602390230 The Organiser will contact with the Regional Sanitary and Epidemiological Station, competent for the showground of the event, or the 24-hour NFZ hotline 800-190-590.



# Limitations and guidelines for specific groups of Participants

## 1. ATHLETES:

Athletes can access Car Park zone, Stables, Show Office and Competition zone where they need to keep 1,5 m of social distance.

Minor Athletes can be accompanied by his/her representative (one per Athlete).

Athletes are not allowed in the Ground Jury box.

All the issues are solved remotely. All official protests are managed in the Show Office as per PZJ and FEI rules. • Cross Country and Show jumping test walking takes place with keeping 1,5m social distance rule.

## 2. TRAINERS

Trainers can access Car Park zone, Stables, Show Office and Competition zone where they need to keep 1,5 m of social distance.

Because of limitations of direct contact, before dressage and cross country test trainers give their instructions from the outside of the warm up area keep 1,5 m social distance.

Before jumping test the trainer is allowed to enter the warm up area only when the rider is jumping, 15 min before the test.



# Limitations and guidelines for specific groups of Participants

## 3. GROOMS AND SUPPORTING TEAM

Grooms can access Car Park zone, Stables and Competition zone outside the warm up area and competition area where they need to keep 1,5 m of social distance.

In case the rider is not accompanied by the trainer, the groom is allowed to enter the warm up area only when the rider is jumping, 15 min before the start.

Supporting Team can access Car Park zone, Stables and Competition where they need to keep 1,5 m of social distance.

1. OFFICIALS • Officials i. e. judges, scribes, Ground Jury assistants while being indoors i.e. judge's hut in dressage, GJ box in jumping test, control centre in cross country test have Personal Protective Equipment. • Only Officials and essential staff responsible for running the test are allowed in GJ box area. • The distance between each working post must be 1.5m or post have to be divided with a screen or everyone has to have Personal Protective Equipment.
2. CAR PARK ZONE • Only Participants of the Event have access to Car Park Zone. • A distance of 1,5 m between vehicles have to be kept. • All Participants in the Car Park Zone has to keep 1,5 m distance • Any gathering of more than 10 persons are strictly forbidden in Car Park Zone.



# Limitations in the Show Office

1. The distance between each working post must be 1.5m or post have to be divided with a screen or everyone has to wear a head shield.
2. The number of people allowed in the Show Office is determined on the square meter space- the coefficient should be 10m<sup>2</sup> per 1 person under condition there's one person being served at the post.
3. Access to Show Office is only limited to Staff, Officials, Athletes and Supporting Team.





# Limitations for media

1. Press Office will work only as remotely (online).
2. The number of Press Office Staff will be limited
3. The Organiser is going to issue limited number of PRESS and PHOTO accreditations one per editorial office /except Official photographers of Organiser and FEI/.
4. Access to the showground is only given to:
  - Press Office Staff- press staff, social media staff, photo staff, video staff
  - Media Partners representative- one per editorial
  - FEI accredited media- FEI TV, photographer
  - TV coverage staff
  - Online coverage staff
5. The Organiser will not provide for accredited media the Press Office or the Media Room All Media representatives are to fill in the health check form and follow the procedure of temperature measurement every day. Also, they must inform the Organiser about the most common symptoms of Covid 19. The most common symptoms of Covid-19 are fever, dry cough, and tiredness. Other symptoms that are less common and may affect some patients include aches and pains, nasal congestion, headache, conjunctivitis, sore throat, diarrhoea, loss of taste or smell or a rash on skin or discoloration of fingers or toes. These symptoms are usually mild and begin gradually. (Source: WHO website: <https://www.who.int/emergencies/diseases/novel-coronavirus-2019/question-and-answers-hub/q-a-detail/q-acoronaviruses>)



# Limitations for Sponsors

1. The number of Sponsor representatives who will have access to the showground and to the specific zones will be limited.
2. Sponsor representatives are only allowed to access Competition zone All Sponsor representatives are to fill in the health check form and follow the procedure of temperature measurement every day. Also, they must inform the Organiser about the most common symptoms of Covid 19. The most common symptoms of Covid-19 are fever, dry cough, and tiredness. Other symptoms that are less common and may affect some patients include aches and pains, nasal congestion, headache, conjunctivitis, sore throat, diarrhoea, loss of taste or smell or a rash on skin or discoloration of fingers or toes. These symptoms are usually mild and begin gradually. (Source: WHO website: <https://www.who.int/emergencies/diseases/novel-coronavirus-2019/question-and-answers-hub/q-a-detail/q-a-coronaviruses>)



# Limitations for trade stands

1. The number of trade stands at the event is limited.
2. All the stands at the event must follow the Guidelines of Polish government on providing safety for employees and customers during a pandemic.
3. The distance between the employees should be 1,5 m and if that's impossible all employees should have Personal Protective Equipment.
4. All individuals queuing should keep min. 1,5 m distance
5. At the entrance and at the till point there should be hand sanitizer available All the staff of trade stands is to fill in the health check form and follow the procedure of temperature measurement every day. Also, they must inform the Organiser about the most common symptoms of Covid 19. The most common symptoms of Covid19 are fever, dry cough, and tiredness. Other symptoms that are less common and may affect some patients include aches and pains, nasal congestion, headache, conjunctivitis, sore throat, diarrhoea, loss of taste or smell or a rash on skin or discoloration of fingers or toes. These symptoms are usually mild and begin gradually. (Source: WHO website: <https://www.who.int/emergencies/diseases/novel-coronavirus-2019/question-and-answers-hub/q-a-detail/q-acoronaviruses>).



# Limitations for hospitality/ catering

1. All the stands at the event must follow the Guidelines of Polish government on providing safety for employees and customers during a pandemic.
2. The distance between the employees should be 1.5m and if that's impossible all employees should have Personal Protective Equipment.
3. All individuals queuing should keep min. 1,5 m distance
4. At the order collecting points and till points there should be hand sanitizer available
5. Tables should have a min. 1,5 m distance.
6. All the tables should be disinfected after each use. All the hospitality/ catering staff is to fill in the health check form and follow the procedure of temperature measurement every day. Also, they must inform the Organiser about the most common symptoms of Covid 19. The most common symptoms of Covid-19 are fever, dry cough, and tiredness. Other symptoms that are less common and may affect some patients include aches and pains, nasal congestion, headache, conjunctivitis, sore throat, diarrhoea, loss of taste or smell or a rash on skin or discoloration of fingers or toes. These symptoms are usually mild and begin gradually. (Source: WHO website: <https://www.who.int/emergencies/diseases/novel-coronavirus-2019/question-and-answers-hub/q-a-detail/q-acoronaviruses>).



# Appendix

**SOPOT HORSE TRAILS HEALTH INTERVIEW**

1. Were you diagnosed with SARS CoV-2 in the last 14 days?

☐ YES ☐ NO

2. Did you have contact with person diagnosed with SARS CoV-2 in the last 14 days?

☐ YES ☐ NO

3. Is your chills/pupil or anyone in your household in quarantine now?

☐ YES ☐ NO

4. Do you or anyone in your household have the most common symptoms of Covid-19?  
The most common symptoms of Covid-19 are fever, dry cough and tiredness. Other symptoms that are less common and may affect some patients include aches and pains, headache, conjunctivitis, sore throat, loss of taste or smell or a rash on skin. These symptoms are usually mild and begin gradually.

☐ YES ☐ NO

5. Does anyone in your household hd any symptoms mentioned above in the last 14 days?

☐ YES ☐ NO

NAME.....

COUNTRY.....

PHONE NUMBER.....



# Appendix



# Appendix





# Appendix



## HOW TO WASH YOUR HANDS

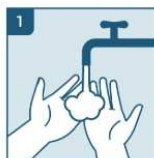
Clean hands protect against infection



[www.nccheurope.com](http://www.nccheurope.com)

[Contact us for more information](#)

[Discover our hand care line](#)



Wet hands



Use enough soap to cover all hand surfaces



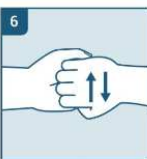
Rub hands palm to palm



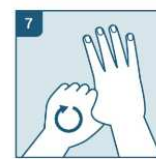
Right palm over left dorsum and left palm over right dorsum



Palm to palm with fingers interlaced



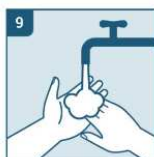
Backs of fingers to opposing palms with fingers interlocked



Rotational rubbing of right thumb clasped in left palm and vice versa



Rotational rubbing backwards and forwards with clasped fingers of right hand in left palm and vice versa



Rinse hands with water



Dry hands thoroughly with a single use towel



Use the towel to turn off the tap



Your hands are clean

Guideline by World Health Organization (WHO)

Photography copyright by: elenabst © / Shutterstock.com





02-05 September 2021

Sopot (POL)

Sopot Horse Trials - Autumn Edition

CCI4\*-L CCI4\*-S CCI3\*-L CCI3\*-S CCI2\*-L CCI2\*-S

SCHEDULE



## I. DENOMINATION OF THE EVENT

---

**Venue:** Sopot - Sopot Horse Trials - Autumn Edition

**NF:** POL

**Date:** 02/09/2021 to 05/09/2021

**Event Categories:**

CCI4\*-L

CCI4\*-S

CCI3\*-L

CCI3\*-S

CCI2\*-L

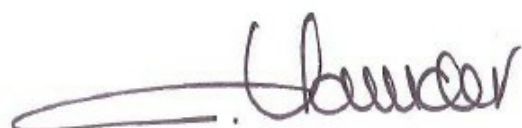
CCI2\*-S

## II. GENERAL CONDITIONS

---

- FEI Statutes, 24th edition, effective 19 November 2019
- FEI General Regulations, 24th edition, effective 1st January 2020, updates effective 1st January 2021
- FEI Veterinary Regulations, 14th edition, effective 1 January 2018, updates effective 1st January 2021
- FEI Eventing Rules and its Annexes, 25th Edition effective 1st January 2019, updates 1st January 2021
- Equine Anti-Doping and Controlled Medication Regulations (EADCMR), 3rd Edition, effective 1st January 2021
- FEI Anti-Doping Rules for Human Athletes (ADRHA), based upon the 2021 WADA Code, effective 1st January 2021
- The FEI Policy for Enhanced Competition Safety during the Covid-19 Pandemic, effective as of 1 July 2020 and until further notice
- All subsequent published revisions/updates, the provisions of which will take precedence.

Approved by the FEI, Lausanne, on 13 August 2021 at 06h26 (V1), modified on 13 August 2021 at 08h45 (V2), modified on 18 August 2021 (V3), modified on 01 September 2021 (V4)



Catrin Norinder  
FEI Director Eventing and Olympic

## **Table of Contents**

<b>I. DENOMINATION OF THE EVENT</b>	<b>1</b>
<b>II. GENERAL CONDITIONS</b>	<b>1</b>
<b>III. THE FEI CODE OF CONDUCT FOR THE WELFARE OF THE HORSE</b>	<b>4</b>
<b>IV. GENERAL INFORMATION</b>	<b>5</b>
1. ORGANISER	5
2. ORGANISING COMMITTEE	6
3. EVENT DIRECTOR	6
4. STABLE MANAGER	6
<b>V. OFFICIALS</b>	<b>7</b>
<b>VI. INVITATIONS</b>	<b>10</b>
1. GENERAL	10
2. ENTRY RIGHTS TO SHOWGROUNDS / ACCREDITED PERSONS	10
<b>VII. ENTRIES</b>	<b>11</b>
1. ENTRY DATES AND ENTRY FEES	11
2. DETAILS ENTRY PROCEDURE FEE / PAYMENT	14
3. OTHER FEES	15
4. NO-SHOWS AND LATE WITHDRAWALS	15
5. QUALIFICATIONS	16
<b>VIII. TIMETABLE</b>	<b>17</b>
<b>IX. COMPETITIONS</b>	<b>20</b>
CCI4*-L	20
CCI4*-S	21
CCI3*-L	22
CCI3*-S	23
CCI2*-L	24
CCI2*-S	25
PRIZE MONEY SUMMARY	26
<b>X. FACILITIES OFFERED</b>	<b>27</b>
1. ATHLETES	27
2. GROOMS	27

<b>XI. LOGISTICAL, ADMINISTRATIVE AND TECHNICAL INFORMATION</b>	<b>28</b>
1. DRAWS	28
2. COMPETITION ARENAS	28
3. PRACTICE ARENAS	28
4. STABLES	28
5. SCORING/TIMING PROVIDER	29
6. OTHER TECHNOLOGY/SERVICE PROVIDER(S)	29
7. PRIZE-GIVING CEREMONY	29
8. ADVERTISING ON ATHLETES AND HORSES	29
9. TICKETING	29
10. BETTING	29
11. TRANSPORT REIMBURSEMENT HORSES/PONIES	29
12. WELCOME	30
13. LOCAL TRANSPORTATION & ARRANGEMENTS FROM HOTEL TO SHOWGROUNDS	30
14. LORRY / CARAVAN FACILITIES	30
15. SUSTAINABILITY	30
<b>XII. VETERINARY MATTERS</b>	<b>31</b>
1. CUSTOMS FORMALITIES	31
2. HEALTH REQUIREMENTS	31
3. NATIONAL REQUIREMENTS	31
4. PONIES	31
5. INJURY SURVEILLANCE	32
6. TRANSPORT OF HORSES	32
7. VENUE ARRIVAL INFORMATION & FITNESS TO COMPETE	32
7.1 PASSPORTS (FEI GENERAL REGULATIONS ARTICLE 137)	32
7.2 VACCINATIONS - EQUINE INFLUENZA (FEI VETERINARY REGULATIONS ARTICLE 1003)	32
7.3 EXAMINATION ON ARRIVAL (FEI VETERINARY REGULATIONS ARTICLE 1031)	33
7.4 HORSE INSPECTIONS (FEI VETERINARY REGULATIONS ARTICLES 1034-1042)	33
7.5 LIMB SENSITIVITY EXAMINATION (FEI VETERINARY REGULATIONS ARTICLE 1048-1053)	33
8. EQUINE ANTI-DOPING AND CONTROLLED MEDICATION PROGRAMME (EADCMP)	33
8.1 SAMPLING (FEI VETERINARY REGULATIONS CHAPTER VII)	33
8.2 ELECTIVE TESTING (FEI VETERINARY REGULATIONS ARTICLES 1057 AND 1058)	33
<b>XIII. HUMAN ANTI-DOPING</b>	<b>33</b>
<b>XIV. ADDITIONAL INFORMATION</b>	<b>34</b>
1. THE FEI POLICY FOR ENHANCED COMPETITION SAFETY DURING THE COVID-19 PANDEMIC	34
2. MEDICAL INFORMATION FORM FOR ARMBANDS	34
3. INSURANCES AND NATIONAL REQUIREMENTS	35
3.1 ATHLETES, OWNERS AND SUPPORT PERSONNEL	35
3.2 ATHLETES AND OWNERS	35
4. PROTESTS / APPEALS	36
5. DISPUTES	36
6. MODIFICATION TO SCHEDULE	36
7. ADDITIONAL INFORMATION FROM THE ORGANISER	36
8. MINIMUM AGE LIMITATION	36
9. PRIZE MONEY DISTRIBUTION	36
<b>XV. ANNEXES</b>	<b>37</b>

### **III. THE FEI CODE OF CONDUCT FOR THE WELFARE OF THE HORSE**

---

The Fédération Equestre Internationale (FEI) expects all those involved in international equestrian sport to adhere to the FEI's Code of Conduct and to acknowledge and accept that at all times the welfare of the horse must be paramount and must never be subordinated to competitive or commercial influences.

1. At all stages during the preparation and training of competition horses, welfare must take precedence over all other demands. This includes good horse management, training methods, farriery and tack, and transportation.
2. Horses and Athletes must be fit, competent and in good health before they are allowed to compete. This encompasses medication use, surgical procedures that threaten welfare or safety, pregnancy in mares and the misuse of aids.
3. Events must not prejudice horse welfare. This involves paying careful attention to the competition areas, ground surfaces, weather conditions, stabling, site safety and fitness of the horse for onward travel after the event.
4. Every effort must be made to ensure that horses receive proper attention after they have competed and that they are treated humanely when their competition careers are over. This covers proper veterinary care, competition injuries, euthanasia and retirement.
5. The FEI urges all involved with the sport to attain the highest levels of education in their areas of expertise.

The Long version of this Code can be obtained from the Fédération Equestre Internationale, HM King Hussein I Building, Chemin de la Joliette 8, 1006 Lausanne, Switzerland. Telephone: +41 21 310 47 47. The Code is available in English. The Code is also available on the FEI's website: <https://inside.fei.org/fei/regulations/general-rules>.

## IV. GENERAL INFORMATION

### 1. ORGANISER

**Name:** Hipodrom Sopot Sp- z o.o.  
**Address:** Sopot  
81-736 Sopot Poland  
**Phone:** +48585517896  
**Fax:**  
**Email:** zawody@hipodrom.sopot.pl  
**Website:** www.hipodrom.sopot.pl

### Showground contact details

**Venue name:** Sopot  
**Address:** Poland  
**Phone:**  
**GPS Coordinates:** Lat: 54.42604, Long: 18.57483



### Accessibility details (directions by road, nearest airport / train station):

Main gate: Łokietka street (vis a vis Ergo Arena)

Nearest airport: Gdańsk Lech Wałęsa Airport

Nearest train station: Sopot

## **2. ORGANISING COMMITTEE**

<b>Show Secretary</b>	Anna KNIEJSKA
<b>Press Officer</b>	Alicja KOCIK
<b>President of the Event</b>	Kaja KOCZUROWSKA-WAWRZKIEWICZ

## **3. EVENT DIRECTOR**

**Name:** Leszek PAWLAK

## **4. STABLE MANAGER**

**Name:** Patryk FILIPEK

## V. OFFICIALS

Please note that the schedule has been approved under the provision that all appointed Officials have successfully passed the online FEI Competency Evaluation Test.

Assignment	Name / FEI ID	NF	Function	Events
1. Ground Jury				
CCI4*-L				
Ground Jury President	Tomasz MOSSAKOWSKI 10049773	POL	Judge (3)	
Ground Jury Member	Judith EISNECKER 10106122	AUT	Judge (2)	
Ground Jury Member	Jutta KOIVULA 10049152	FIN	Judge (3)	
Jumping Judge	All jury members			
CCI4*-S				
Ground Jury President	Jutta KOIVULA 10049152	FIN	Judge (3)	
Ground Jury Member	Judith EISNECKER 10106122	AUT	Judge (2)	
Jumping Judge	All jury members			
CCI3*-L				
Ground Jury President	Judith EISNECKER 10106122	AUT	Judge (2)	
Ground Jury Member	Jutta KOIVULA 10049152	FIN	Judge (3)	
Jumping Judge	All jury members			
CCI3*-S				
Ground Jury President	Malgorzata CHAJECKA 10149409	POL	Judge (2)	
Ground Jury Member	Pawel SOJECKI 10143243	POL	Judge (N)	
Jumping Judge	All jury members			
CCI2*-L				



Assignment	Name / FEI ID	NF	Function	Events
Ground Jury President	<b>Malgorzata CHAJECKA</b> 10149409	POL	Judge (2)	
Ground Jury Member	<b>Zofia GORSKA</b> 10048882	POL	Judge (N)	
Jumping Judge	<b>All jury members</b>			
<b>CCI2*-S</b>				
Ground Jury President	<b>Tomasz MOSSAKOWSKI</b> 10049773	POL	Judge (3)	
Ground Jury Member	<b>Wojciech FRANKOWSKI</b> 10052980	POL	Judge (N)	
Jumping Judge	<b>All jury members</b>			
<b>2. Technical Delegate</b>				
Technical Delegate	<b>Joanna MANDECKA-TURCZYNSKA</b> 10045058	POL	Technical delegate (2)	CCI3*-L, CCI3*-S, CCI2*-L
Technical Delegate	<b>Peter KOEPEL</b> 10008060	GER	Technical delegate (3)	CCI4*-L, CCI4*-S
Technical Delegate	<b>Bogusław JARECKI</b> 10063234	POL	Technical delegate (N)	<b>CCI2*-S</b>
Assistant Technical Delegate	<b>Joanna MANDECKA-TURCZYNSKA</b> 10045058	POL	Technical delegate (2)	CCI4*-L, CCI4*-S
Assistant Technical Delegate	<b>Bogusław JARECKI</b> 10063234	POL	Technical delegate (N)	<b>CCI3*-L</b>
<b>3. Course Designer</b>				
Cross Country Course Designer	<b>Lars CHRISTENSSON</b> 10004750	SWE	Course designer (3)	All Events
Jumping Course Designer	<b>Mikolaj SZTANDUR</b> 10232279	POL	Course designer (N)	All Events
Course Builder	<b>Sylwiusz BRONK</b> 10234351			All Events
<b>4. Chief Steward</b>				
Chief Steward	<b>Zbigniew SEIBT</b> 10052984	POL	Steward (3)	All Events
<b>5. Assistant Stewards</b>				

Assignment	Name / FEI ID	NF	Function	Events
Assistant Steward	<b>Malgorzata SZKUDLAREK</b> 10108473	POL	Steward (2)	All Events
Assistant Steward	<b>Anna BOSIACKA</b> 10140023	POL	Steward (1)	All Events
Assistant Steward	<b>Alina TALIK - PRZECHRZTA</b> 10169756	POL	Steward (1)	All Events
Assistant Steward	<b>Katarzyna BAGDZION</b> 10169755	POL	Steward (N)	All Events
<b>6. FEI Veterinary Delegate</b>				
Veterinary Delegate	<b>Grzegorz CHAJECKI</b> 10051661	POL	Official Veterinarian (3)	All Events
<b>7. Veterinary Service Manager &amp; Treating Veterinarian</b>				
Veterinary Service Manager (VSM)	<b>Zdzislaw PECZYNSKI</b> 10049905	POL	FEI Permitted Treating Veterinarian	All Events
Treating Veterinarian	<b>Zdzislaw PECZYNSKI</b> 10049905	POL	FEI Permitted Treating Veterinarian	All Events
<b>8. Chief Medical Officer &amp; Medical Services</b>				
Chief Medical Officer	<b>Wojciech LEWINSKI</b> 10247459 <i>Phone: +48 604 609 360</i>			All Events
Medical Services	<b>Nordambulanse</b> 30000113		Corporation	All Events
<b>9. Farrier</b>				
Farrier	<b>Adam POTRYKUS</b> 10247461 <i>Phone: +48 695 516 342</i>			All Events

## **VI. INVITATIONS**

---

### **1. GENERAL**

<b>Invited NFs</b>	Unlimited
<b>Number of athletes from the host nation</b>	Unlimited
<b>Number of athletes per NF</b>	Unlimited
<b>Maximum number of horses per athlete</b>	Unlimited
<b>Ballot procedure in case of excessive entries</b>	The number of starters will be limited to max 200 in all competitions. After 200 places are filled, the remaining entries will be placed on a waiting list and will be admitted only if there are any withdrawals from the initial 200.

Athletes are invited by the Organiser through their National Federation.  
One (1) groom per athlete.

### **2. ENTRY RIGHTS TO SHOWGROUNDS / ACCREDITED PERSONS**

Entry right to the stable area according to FEI Veterinary Regulations Articles 1008-1009

#### **NUMBER OF ACCREDITED PERSONS**

<b>Athlete</b>	2
<b>Partner</b>	1
<b>Groom</b>	1
<b>Horse owner</b>	2 accreditations per horse acc. to FEI Passport

## **VII. ENTRIES**

---

### **IMPORTANT**

- Entries must be made through the FEI Entry System for all categories of this Event (<https://entry.fei.org>);
- Additional documentation can be found at:  
<https://inside.fei.org/fei/your-role/it-services/fei-entry-system>
- All Athletes and Horses participating in any International Competition must be registered with the FEI;
- Athletes and/or Horses present at the Event without having been entered through the FEI's Online Entry System will automatically be disqualified unless compelling circumstances warrant otherwise.

### **1. ENTRY DATES AND ENTRY FEES**

Entries have to be in accordance with Art. 509 of the FEI Eventing Rules, 25th edition, effective 1st January 2020, updates effective 1st January 2021.

#### **Deadlines for entries**

---

<b>Closing date for definite entries:</b>	<b>CCI4*-L 23/08/2021</b> Please be aware, that national classes will be run as well. CNC-100 up to 100cm CNC-1* Entries by: <a href="http://livejumping.com">livejumping.com</a>
	<b>CCI4*-S 23/08/2021</b> Please be aware, that national classes will be run as well. CNC-100 up to 100cm CNC-1* Entries by: <a href="http://livejumping.com">livejumping.com</a>
	<b>CCI3*-L 23/08/2021</b> Please be aware, that national classes will be run as well. CNC-100 up to 100cm CNC-1* Entries by: <a href="http://livejumping.com">livejumping.com</a>
	<b>CCI3*-S 23/08/2021</b> Please be aware, that national classes will be run as well. CNC-100 up to 100cm CNC-1* Entries by: <a href="http://livejumping.com">livejumping.com</a>
	<b>CCI2*-L 23/08/2021</b> Please be aware, that national classes will be run as well. CNC-100 up to 100cm CNC-1* Entries by: <a href="http://livejumping.com">livejumping.com</a>
	<b>CCI2*-S 23/08/2021</b> Please be aware, that national classes will be run as well. CNC-100 up to 100cm CNC-1* Entries by: <a href="http://livejumping.com">livejumping.com</a>

---

<b>Last date for substitutions:</b>	<b>CCI4*-L 01/09/2021</b>
	<b>CCI4*-S 01/09/2021</b>
	<b>CCI3*-L 01/09/2021</b>
	<b>CCI3*-S 01/09/2021</b>
	<b>CCI2*-L 01/09/2021</b>
	<b>CCI2*-S 01/09/2021</b>

**Fees for horses**

<b>Entry fee per horse</b>	
CCI4*-L	320 EUR incl. VAT (23%)
CCI4*-S	320 EUR incl. VAT (23%)
CCI3*-L	260 EUR incl. VAT (23%)
CCI3*-S	260 EUR incl. VAT (23%)
CCI2*-L	220 EUR incl. VAT (23%)
CCI2*-S	220 EUR incl. VAT (23%)
<b>EADCMP Fee</b>	
Lower Level Events (CIMs) CHF 18 per horse per event (For definition of CIMs see Appendix E of the FEI General Regulations)	
Higher Level Events CHF 25 per horse per event (All other events not defined as CIMs)	
CCI4*-L	24 EUR (25 CHF not included in entry fee)
CCI4*-S	24 EUR (25 CHF not included in entry fee)
CCI3*-L	17 EUR (18 CHF not included in entry fee)
CCI3*-S	17 EUR (18 CHF not included in entry fee)
CCI2*-L	17 EUR (18 CHF not included in entry fee)
CCI2*-S	17 EUR (18 CHF not included in entry fee)
<b>Stabling fee per horse</b>	
CCI4*-L	140 EUR incl. VAT (23%) "NEW STABLES" (only 25 boxes) - 140 eur (extra day 45eur) "PERMANENT OLD STABLES" - 100 eur (extra day 30 eur) if needed "TENT STABLES" - 80 eur (extra day 20 eur) Stabling must be paid before 23.08.2021
CCI4*-S	140 EUR incl. VAT (23%) "NEW STABLES" (only 25 boxes) - 140 eur (extra day 45eur) "PERMANENT OLD STABLES" - 100 eur (extra day 30 eur) if needed "TENT STABLES" - 80 eur (extra day 20 eur) Stabling must be paid before 23.08.2021
CCI3*-L	140 EUR incl. VAT (23%) "NEW STABLES" (only 25 boxes) - 140 eur (extra day 45eur) "PERMANENT OLD STABLES" - 100 eur (extra day 30 eur) if needed "TENT STABLES" - 80 eur (extra day 20 eur) Stabling must be paid before 23.08.2021

CCI3*-S	140 EUR incl. VAT (23%) "NEW STABLES" (only 25 boxes) - 140 eur (extra day 45eur) "PERMANENT OLD STABLES" - 100 eur (extra day 30 eur) if needed "TENT STABLES" - 80 eur (extra day 20 eur) Stabling must be paid before 23.08.2021
CCI2*-L	140 EUR incl. VAT (23%) "NEW STABLES" (only 25 boxes) - 140 eur (extra day 45eur) "PERMANENT OLD STABLES" - 100 eur (extra day 30 eur) if needed "TENT STABLES" - 80 eur (extra day 20 eur) Stabling must be paid before 23.08.2021
CCI2*-S	140 EUR incl. VAT (23%) "NEW STABLES" (only 25 boxes) - 140 eur (extra day 45eur) "PERMANENT OLD STABLES" - 100 eur (extra day 30 eur) if needed "TENT STABLES" - 80 eur (extra day 20 eur) Stabling must be paid before 23.08.2021
<b>Total fee per horse</b>	
CCI4*-L	484 EUR incl. VAT
CCI4*-S	484 EUR incl. VAT
CCI3*-L	417 EUR incl. VAT
CCI3*-S	417 EUR incl. VAT
CCI2*-L	377 EUR incl. VAT
CCI2*-S	377 EUR incl. VAT

## 2. DETAILS ENTRY PROCEDURE FEE / PAYMENT

Hipodrom Sopot sp. z o.o., Polna 1, 81-745 Sopot, Poland

PKO Bank Polski S.A.O/POB PLN 73 1440 1101 0000 0000 1146 9353

For EUR payments:

PKO Bank Polski S.A. O/POB SWIFT CODE (BIC) BPKOPLPW

PL 54 1440 1101 0000 0000 1268 9567 ( BIC) BPKOPLPW

All bank transfer costs must be compensated to the amounts stated in the Schedule. The difference has to be paid upon arrival. This amount will not be refunded.

**Stabling must be paid till 23.08 and must be accompanied to the definite entries, otherwise no stabling will be provided.**

All payment can be done either in EUR or PLN equivalent. Any costs difference must be reimbursed at the rate of

exchange stated 03.09. (Bank NBP)

Every rider should pay for the stabling in advance 100 EUR.

For the first bedding organizer provides straw, shaving must be ordered in advance and paid additionally.

After the decision which box horse will be stabled the difference will be charged upon arrival.

**Olympic medalists – stabling free for one horse**

**INVOICES:**

Person who want to receive an invoice for the company are asked to write a tax identification number in the title of the transfer and send information to the email address: [ksiegowosc@hipodrom.sopot.pl](mailto:ksiegowosc@hipodrom.sopot.pl)

### **3. OTHER FEES**

All other fees must be listed hereunder with the details of the amounts to be charged and approved by the FEI. Only fees approved by the FEI and listed in the approved Schedule can be charged by the OC.

Electricity for boxes (upon request)	70 EUR per box upon request
Manure disposal	Included in entry fee
Hay	8 EUR per bale incl. VAT (23%)
Straw	6 EUR per bale incl. VAT (23%)
Shavings	18 EUR per bale incl. VAT (23%)
Sanitary facilities	Free of charge

**Lorry / Caravan area**

Parking price	Free of charge
Power supply	70 EUR per lorry/caravan incl. VAT (23%) - Provided by the OC
Water supply	Free of charge

**Specific fees**

Health papers	25 EUR per horse incl. VAT (23%) ONLY UPON REQUEST IN ADVANCE!
---------------	---

All aforementioned amounts include VAT, if applicable

VAT number of the Organiser: PL 585 10 01 93

### **4. NO-SHOWS AND LATE WITHDRAWALS**

In the case of withdrawals after the date of definite entries or no-shows the athlete or the respective NF will be held liable to reimburse the OC for the actual financial loss incurred by the OC (i.e. stabling and hotel expenses) as a result of the late withdrawal or no-show.



<b>Amount charged</b>	100 EUR
<b>Refund procedure</b>	<p><b>Withdrawal before the date of definite entries</b> - OC refund all fees</p> <p><b>Withdrawal after the date of definite entries and before the of 27.08</b> - Athletes or respective NF has to pay the amount of 100 EUR per horse</p> <p><b>Withdrawal after the date of 27.08 or no-shows</b> - Athletes or respective NF has to pay full entry fee per horse</p>

## **5. QUALIFICATIONS**

Entries have to be in accordance with Art. 520 and 521 of the FEI Eventing Rules, 25th edition, effective 1st January 2020, updates effective 1st January 2021.

The eligibility to compete will be determined by a combination of the following:

- The level of the Athlete category (National, D, C, B, A) (Art.519)
- The achievement of a number of Minimum Eligibility Requirements according to the eligibility matrix of requirements (Art. 520)

## VIII. TIMETABLE

CCI4*-L	Day	Date	Time
Vet examination on arrival	Wednesday	01/09/2021	12:00
Opening of stables	Wednesday	01/09/2021	12:00
Official course inspection COURSE WALK FOR RIDERS 17.15	Thursday	02/09/2021	16:30
Declaration of starters	Thursday	02/09/2021	17:45
1st horse inspection	Thursday	02/09/2021	18:45
Dressage Test	Friday	03/09/2021	11:00
Cross-Country Test	Saturday	04/09/2021	14:20
2nd horse inspection	Sunday	05/09/2021	08:20
Jumping Test	Sunday	05/09/2021	12:00
Prize-giving	Sunday	05/09/2021	13:00

CCI4*-S	Day	Date	Time
Vet examination on arrival	Wednesday	01/09/2021	12:00
Opening of stables	Wednesday	01/09/2021	12:00
Official course inspection COURSE WALK FOR RIDERS 14.30	Thursday	02/09/2021	13:30
Declaration of starters	Thursday	02/09/2021	15:30
Dressage Test	Thursday	02/09/2021	17:00
Cross-Country Test	Saturday	04/09/2021	13:00
2nd horse inspection	Sunday	05/09/2021	08:10
Jumping Test	Sunday	05/09/2021	11:40
Prize-giving	Sunday	05/09/2021	12:15

CCI3*-L	Day	Date	Time
Vet examination on arrival	Wednesday	01/09/2021	12:00

<b>Opening of stables</b>	Wednesday	01/09/2021	12:00
<b>Official course inspection</b> COURSE WALK FOR RIDERS 17:00	Thursday	02/09/2021	16:00
<b>Declaration of starters</b>	Thursday	02/09/2021	17:45
<b>1st horse inspection</b>	Thursday	02/09/2021	18:30
<b>Dressage Test</b>	Friday	03/09/2021	09:30
<b>Cross-Country Test</b>	Saturday	04/09/2021	12:15
<b>2nd horse inspection</b>	Sunday	05/09/2021	08:05
<b>Jumping Test</b>	Sunday	05/09/2021	11:00
<b>Prize-giving</b>	Sunday	05/09/2021	11:40

<b>CCI3*-S</b>	<b>Day</b>	<b>Date</b>	<b>Time</b>
<b>Vet examination on arrival</b>	Wednesday	01/09/2021	12:00
<b>Opening of stables</b>	Wednesday	01/09/2021	12:00
<b>Official course inspection</b> COURSE WALK FOR RIDERS 12:45	Thursday	02/09/2021	12:00
<b>Declaration of starters</b>	Thursday	02/09/2021	13:30
<b>Dressage Test - 1st Day</b>	Thursday	02/09/2021	15:00
<b>Dressage Test - 2nd Day</b>	Friday	03/09/2021	08:00
<b>Jumping Test</b>	Friday	03/09/2021	15:30
<b>Cross-Country Test</b>	Saturday	04/09/2021	11:00
<b>Prize-giving</b>	Saturday	04/09/2021	14:00

<b>CCI2*-L</b>	<b>Day</b>	<b>Date</b>	<b>Time</b>
<b>Vet examination on arrival</b>	Wednesday	01/09/2021	12:00
<b>Opening of stables</b>	Wednesday	01/09/2021	12:00
<b>Official course inspection</b> COURSE WALK FOR RIDERS 17:00	Thursday	02/09/2021	14:00
<b>Declaration of starters</b>	Thursday	02/09/2021	18:00
<b>1st horse inspection</b>	Thursday	02/09/2021	18:15

<b>Dressage Test</b>	Friday	03/09/2021	08:00
<b>Cross-Country Test</b>	Saturday	04/09/2021	09:30
<b>2nd horse inspection</b>	Sunday	05/09/2021	08:00
<b>Jumping Test</b>	Sunday	05/09/2021	10:00
<b>Prize-giving</b>	Sunday	05/09/2021	10:30

<b>CCI2*-S</b>	<b>Day</b>	<b>Date</b>	<b>Time</b>
<b>Vet examination on arrival</b>	Wednesday	01/09/2021	12:00
<b>Opening of stables</b>	Wednesday	01/09/2021	12:00
<b>Official course inspection</b> COURSE WALK FOR RIDERS 12:45	Thursday	02/09/2021	12:00
<b>Declaration of starters</b>	Thursday	02/09/2021	13:30
<b>Dressage Test - 1st Day</b>	Thursday	02/09/2021	15:00
<b>Dressage Test - 2nd Day</b>	Friday	03/09/2021	08:50
<b>Jumping Test</b>	Friday	03/09/2021	16:40
<b>Cross-Country Test</b>	Saturday	04/09/2021	09:00
<b>Prize-giving</b>	Saturday	04/09/2021	14:00

## **IX. COMPETITIONS**

---

These competitions will be in accordance with the FEI Eventing Rules and its Annexes, 25th edition, effective 1st January 2020, updates effective 1st January 2021.

### **CCI4\*-L**

#### **TECHNICAL CONDITIONS**

**DRESSAGE TEST**      CCI4\* B  
CCI4\*-L

**CROSS-COUNTRY TEST**      **Length:**      5700-6270 m  
CCI4\*-L      **Speed:**      570 m/min  
      **Number of efforts:**      max 40

**JUMPING**      **Distance:**      600 m  
CCI4\*-L      **Speed:**      375 m/min  
      **Max. number of efforts:**      15  
      **Number of obstacles:**      11-12

#### **PRIZE CLASSIFICATION**

---

**Total amount of prize money per section:**      2,700 EUR

---

I place – 850 €  
II place – 650 €  
III place – 500 €  
IV place – 350 €  
V place – 250 €  
25% of starters - 100€ (to be divided between further placed competitors according to R.G.Art.129.3)

---

10%

---

**Other details on prize money distribution**

**CCI4\*-S**

**TECHNICAL CONDITIONS**

**DRESSAGE TEST** CCI4\* B  
CCI4\*-S

**CROSS-COUNTRY TEST** Length: 3420-3990 m  
CCI4\*-S Speed: 570 m/min  
Number of efforts: max 35

**JUMPING** Distance: 600 m  
CCI4\*-S Speed: 375 m/min  
Max. number of efforts: 15  
Number of obstacles: 11-12

**PRIZE CLASSIFICATION**

---

**Total amount of prize money per section:** 2,300 EUR

---

place – 700 €  
II place – 600 €  
III place – 500 €  
IV place – 300 €  
V place – 200 €  
25% of starters - 100€ (to be divided between further placed competitors according to R.G.Art.129.3)

---

10%

---

**Other details on prize money distribution**

**CCI3\*-L**

**TECHNICAL CONDITIONS**

**DRESSAGE TEST** CCI3\* B  
CCI3\*-L

**CROSS-COUNTRY TEST** Length: 4400-5500 m  
CCI3\*-L Speed: 550 m/min  
Number of efforts: max 35

**JUMPING** Distance: 600 m  
CCI3\*-L Speed: 350 m/min  
Max. number of efforts: 14  
Number of obstacles: 10-11

**PRIZE CLASSIFICATION**

---

**Total amount of prize money per section:** 1,600 EUR

---

I place – 500 €  
II place – 350 €  
III place – 300 €  
IV place – 200 €  
V place – 150 €  
25% of starters - 100€ (to be divided between further placed competitors according to R.G.Art.129.3)

---

10%

---

**Other details on prize money distribution**

**CCI3\*-S**

**TECHNICAL CONDITIONS**

**DRESSAGE TEST** CCI3\* B  
CCI3\*-S

**CROSS-COUNTRY TEST** Length: 3025-3575 m  
CCI3\*-S Speed: 550 m/min  
Number of efforts: 27-32

**JUMPING** Distance: 600 m  
CCI3\*-S Speed: 350 m/min  
Max. number of efforts: 14  
Number of obstacles: 10-11

**PRIZE CLASSIFICATION**

---

**Total amount of prize money per section:** 1,600 EUR

---

I place – 500 €  
II place – 350 €  
III place – 300 €  
IV place – 200 €  
V place – 150 €  
25% of starters - 100€ (to be divided between further placed competitors according to R.G.Art.129.3)

---

10%

---

**Other details on prize money distribution**



**CCI2\*-L**

**TECHNICAL CONDITIONS**

**DRESSAGE TEST** CCI2\* B  
CCI2\*-L

**CROSS-COUNTRY TEST** Length: 3640-4680 m  
CCI2\*-L Speed: 520 m/min  
Number of efforts: 30

**JUMPING** Distance: 600 m  
CCI2\*-L Speed: 350 m/min  
Max. number of efforts: 12  
Number of obstacles: 10-11

**PRIZE CLASSIFICATION**

---

**Total amount of prize money per section:** 1,300 EUR

---

I place – 400 €  
II place – 300 €  
III place – 200 €  
IV place – 150 €  
V place – 100 €  
25% of starters - 100€ (to be divided between further placed competitors according to R.G.Art.129.3)

---

10%

---

**Other details on prize money distribution**

**CCI2\*-S**

**TECHNICAL CONDITIONS**

**DRESSAGE TEST** CCI2\* B  
CCI2\*-S

**CROSS-COUNTRY TEST** Length: 2600-3100 m  
CCI2\*-S Speed: 520 m/min  
Number of efforts: 30

**JUMPING** Distance: 600 m  
CCI2\*-S Speed: 350 m/min  
Max. number of efforts: 12  
Number of obstacles: 10-11

**PRIZE CLASSIFICATION**

---

**Total amount of prize money per section:** 1,300 EUR

---

I place – 400 €  
II place – 300 €  
III place – 200 €  
IV place – 150 €  
V place – 100 €  
25% of starters - 100€ (to be divided between further placed competitors according to R.G.Art.129.3)

---

10%

---

**Other details on prize money distribution**

## PRIZE MONEY SUMMARY

Category	Amount
CCI4*-L	2,700.00 EUR
CCI4*-S	2,300.00 EUR
CCI3*-L	1,600.00 EUR
CCI3*-S	1,600.00 EUR
CCI2*-L	1,300.00 EUR
CCI2*-S	1,300.00 EUR
<b>Total</b>	<b>10,800.00 EUR</b>

National riders – bank transfer

Foreign riders – cash or bank transfer

### IMPORTANT

**The total amount of prize money shown for each Competition in the schedule must be distributed. (FEI General Regulations articles 127 and 128)**

The value of the **1st prize must not exceed 1/3 of the total prize money** distributed for the competition. The minimum number of prizes offered for each competition must be allocated on the basis of one prize for every commenced four Athletes, with a minimum of five prizes.

### DEDUCTIONS FROM PRIZE MONEY AT COMPETITIONS

**Full details of any deductions from prize money must be outlined in the schedule. This includes government taxes. If it is necessary for Organisers to deduct such taxes, they must provide participants with an official form indicating the amount of tax deducted.**

**The tax form must be provided to the athletes upon arrival and returned to the Organiser prior to departing.**

## **X. FACILITIES OFFERED**

---

### **1. ATHLETES**

#### **ACCOMMODATION**

[www.booking.com](http://www.booking.com)

[www.nocowanie.pl](http://www.nocowanie.pl)

#### **MEALS**

-

### **2. GROOMS**

#### **ACCOMMODATION**

-

#### **MEALS**

-

If applicable, Organiser must provide proper sanitary conditions. The showering facilities should be sufficient for both male and female grooms with hot and cold water. Shower facilities as well as restrooms should at all times be in a state of cleanliness.

## XI. LOGISTICAL, ADMINISTRATIVE AND TECHNICAL INFORMATION

### 1. DRAWS

#	Draw name	Day	Date	Time	Additional information
1	DRAWS FOR THE CLASSES	Thursday	02/09/2021	14:30	ALL DRAWS FOR THE CLASSES WILL BE MADE BY THE COMPUTER SYSTEM PRIOR TO THE EACH CLASS

### 2. COMPETITION ARENAS

	Name	Width (m)	Length (m)	Type of footing/ground
Dressage	A1 (main arena)	20	60	Fiber sand
Dressage	A2 (main arena)	20	60	Fiber sand
Cross-country				Grass, partly sand
Jumping	C	80	80	Grass
Jumping	Main arena (A)	60	110	Fiber sand

### 3. PRACTICE ARENAS

Name	Width (m)	Length (m)	Type of footing/ground
Main practice arena	35	70	Fiber sand
Additional practice arena	40	70	Sand
XC Warm Up	50	100	Grass
Additional practice arena	50	50	Grass

### 4. STABLES

Size of boxes **3.5 m x 3 m**  
(80% minimum 3m x 3m + 20% 3m x 4m)

Organizer will decide about the allocation to the stables, depending on the availability.

First bedding with straw.

Request shavings for the first bedding must be sent together with the entries until 23.08 and costs 30 EUR extra (paid before with all entry fee).

Private tent for horses or stabling on lorries is not permitted.

**Stable Manager: Patryk Filipek +48 796 818 039**

## 5. SCORING/TIMING PROVIDER

The Scoring and Timing of the Event will be performed by the following provider:

(The list of certified Service Providers is available here: <https://inside.fei.org/fei/your-role/it-services/it-providers/list>)

<b>Name of the company:</b>	Cheval-Tech	
<b>Contact person at event:</b>	<b>Name:</b>	Krzysztof KIERZEK
	<b>FEI ID Number:</b>	10137214
	<b>Contact email:</b>	cheval-tech@o2.pl

## 6. OTHER TECHNOLOGY/SERVICE PROVIDER(S)

Will you use other technology/service provider(s) at your Event? **No**

## 7. PRIZE-GIVING CEREMONY

The owner of the winning horse/pony is invited to the prize-giving ceremony: **Yes**

The number of athletes required to present themselves for the prize-giving ceremony of each competition is: **6**

Athletes riding their horses: **No**

## 8. ADVERTISING ON ATHLETES AND HORSES

At CI events, and all competitions except for the Nations Cup, athletes are authorised to carry the logo of their personal sponsor in accordance with article 541 of the FEI Eventing Rules.

The Chief Steward will check that the advertising on athletes and horses complies with these Articles.

## 9. TICKETING

Are you selling tickets for spectators to attend your event? **No**

## 10. BETTING

Betting will be authorised by the Organiser: **No**

## 11. TRANSPORT REIMBURSEMENT HORSES/PONIES

-

## **12. WELCOME**

The time and date of arrival of athletes, horses and their means of transport must be given to the Organiser in order to facilitate their arrival.

## **13. LOCAL TRANSPORTATION & ARRANGEMENTS FROM HOTEL TO SHOWGROUNDS**

Walking distance: **Yes**

Organiser shuttle service available: **No**

Public transport available: **Yes, paid by the athlete**

Approximate cost per round trip: **4 EUR**

## **14. LORRY / CARAVAN FACILITIES**

Lorry or caravan can be parked close to the stables: **Yes**

## **15. SUSTAINABILITY**

Please consider the environment when organising an FEI Event. Please find useful information on FEI Sustainability here:  
<http://inside.fei.org/fei/your-role/organisers/handbook>

## XII. VETERINARY MATTERS

---

### 1. CUSTOMS FORMALITIES

Contact details for Customs Formalities:

**Name:** C. HARTWIG S.A.

**Address:**

**Phone:** +48 22 868 34 71

**Fax:**

**Email:**

**Opening hours:**

### 2. HEALTH REQUIREMENTS

#### GENERAL

In accordance with the FEI Code of Conduct for the Welfare of the Horse it is imperative that all Horses at FEI Events are physically fit and free from infectious disease before being allowed to compete.

#### ENTRY OF HORSES

**Required health tests and vaccinations**

-

**Quarantine period**

-

**Specimen Import Licence applied**

-

### 3. NATIONAL REQUIREMENTS

-

### 4. PONIES

FEI Veterinary Regulations, Chapter IX: For all Pony Events, Ponies must be available for Pony Measurement if requested by the FEI.



## **5. INJURY SURVEILLANCE**

FEI Veterinary Regulations Chapter VIII: Horses participating in FEI Events are subject to injury surveillance protocols; and in the event of fatality, a post mortem examination.

## **6. TRANSPORT OF HORSES**

Horses must be fit to travel and be transported in suitable vehicles for the transport of horses. Any government requirements for disease testing and control must be requested well in advance, to ensure that the horse is in compliance by the time of arrival at the border of the country where the Event is taking place. Athletes, or their representatives, have the responsibility to comply with national legislation in both their country of origin and the host nation of the Event. Where necessary athletes must contact local government authorities or veterinary advisors for information regarding animal health requirements and transport legislation. Within the European Union (EU), this includes EU Council Regulation (EC) No 1/2005 concerning the protection of animals during transport within the Member States of the EU.

## **7. VENUE ARRIVAL INFORMATION & FITNESS TO COMPETE**

### **7.1 PASSPORTS (FEI GENERAL REGULATIONS ARTICLE 137)**

For all issues relating to FEI Horse Passports/FEI Recognition Cards please contact your National Federation. All Horses competing at FEI Events must be registered with the FEI. FEI Passports or FEI Recognition Cards (for those Horses with a national passport approved by the FEI) are compulsory for FEI Events. NB: Horses entered in CIMs and in CSIP in their country of residence are not required to have an FEI Passport or FEI Recognition Card but must be properly registered with the FEI and identifiable (GRs 137.2). Athletes who do not present a Horse's Passport and/or Recognition Card, or one that is not correctly validated or fail to meet other passport requirements will be subject to Sanctions in accordance with Annex VI of the FEI Veterinary Regulations and may not be allowed to compete. NB: for Horses permanently resident in a Member State of the European Union: all Horses must have a national EU passport in compliance with EU Regulations to which a FEI Recognition card is applied. The exception to this being Horses in possession of an FEI passport which has been continually revalidated without interruption.

### **7.2 VACCINATIONS - EQUINE INFLUENZA (FEI VETERINARY REGULATIONS ARTICLE 1003)**

Horses competing at FEI Events must comply with the requirements for Equine Influenza vaccination in accordance with the Veterinary Regulations and as summarised below.

<b>Vaccination</b>	<b>Protocol</b>	<b>Eligibility to enter venue</b>
Primary course	1st Vaccination: day 0 2nd Vaccination: day 21-92	May compete 7 days after the 2nd Vaccination
First booster	Within 7 months of the 2nd vaccination of the Primary Course	May compete for 6 months +21 days after the 2nd vaccination of the Primary Course Must not compete in the 7 days after receiving a vaccination
Boosters	<b>MINIMUM:</b> within one year of previous booster vaccination <b>IF COMPETING:</b> must be in the 6 months +21 days of the booster previous vaccination	Must have been vaccinated within 6 months +21 days before arriving at the Event Must not compete in the 7 days after receiving a vaccination

All FEI registered Horses intending to compete at FEI Events (including CIMs) must be vaccinated against Equine Influenza in accordance with these VRs. The exception being if the applicable domestic legislation prevents the use of Equine

Influenza vaccines within the relevant territory.

### **7.3 EXAMINATION ON ARRIVAL (FEI VETERINARY REGULATIONS ARTICLE 1031)**

On arrival at an Event venue, all Horses must undergo an examination by a veterinarian to confirm their identification from their passport and micro-chip ID (where present), their vaccination status and general health. To protect all horses attending events, any Horse with a questionable health status concerning vaccination, disease or other concerns, must be stabled within the isolation facilities provided by the Organising Committee pending a decision on entering the venue.

### **7.4 HORSE INSPECTIONS (FEI VETERINARY REGULATIONS ARTICLES 1034-1042)**

All Horses will be assessed for their fitness to compete during the Horse Inspection. Any Horse demonstrating questionable fitness may be referred to the Holding Box for further veterinary examination. Horses not deemed fit to compete by the Inspection Panel will not be permitted to compete.

### **7.5 LIMB SENSITIVITY EXAMINATION (FEI VETERINARY REGULATIONS ARTICLE 1048-1053)**

All Horses are subject to examination under the protocol for abnormal limb sensitivity throughout the period of an Event, including, but not limited to, between rounds and before the Jump Off. Horses may be examined once or on multiple occasions during the Period of an Event. Horses may be selected for examination under the protocol randomly or they may be targeted. All Horses selected to be tested must submit promptly to the examination or are subject to immediate disqualification. There is no obligation to examine any specific number of Horses at an Event.

## **8. EQUINE ANTI-DOPING AND CONTROLLED MEDICATION PROGRAMME (EADCMP)**

### **8.1 SAMPLING (FEI VETERINARY REGULATIONS CHAPTER VII)**

All horses competing at FEI Events may be subject to sampling for the presence of Prohibited Substances in accordance with the Anti-Doping and Controlled Medication Regulations (EADCMRs). Horses may be selected for sampling in accordance with obligatory testing, targeted or random sampling procedures. Refer to FEI Financial Charges for details of fees relating to Equine and Human Anti-Doping program (EADCMP), which OCs/NFs have the right to charge to the athlete (applicable for all FEI events worldwide).

### **8.2 ELECTIVE TESTING (FEI VETERINARY REGULATIONS ARTICLES 1057 AND 1058)**

Elective Testing may be carried out prior to an Event to check for the presence of prohibited substances. Please refer to <https://inside.fei.org/fei/cleansport/horses> for information and details.

## **XIII. HUMAN ANTI-DOPING**

---

Athletes can be tested at any FEI Event, by the FEI or by other Anti-Doping Organisations with Testing jurisdiction. Organisers will have the responsibility to provide facilities and staff/volunteers to facilitate such Testing if requested by the FEI as outlined in article 22.3 of the FEIs' Anti-doping Rules for Human Athletes (ADRHA).

The ADRHA rules are published on the FEI's website at <http://inside.fei.org/content/anti-doping-rules>.

## XIV. ADDITIONAL INFORMATION

### 1. THE FEI POLICY FOR ENHANCED COMPETITION SAFETY DURING THE COVID-19 PANDEMIC

The FEI Policy for Enhanced Competition Safety during the Covid-19 Pandemic ("Policy") (<https://inside.fei.org/fei/covid-19/return-to-play/policy-tools>) is mandatory and applies for any FEI Event taking place **as of 1 July 2020**. The Policy has been developed based on currently accepted best practices by the WHO and US Center for Disease Control (CDC) and will be continually reviewed and updated as more information becomes available. It is not intended to replace the applicable guidance and policies from domestic government and health authorities, but to supplement their recommendations with sport specific considerations.

The OC shall submit the risk assessment and mitigation plan (including name and contact details of the person in charge) to the FEI as an annex to the Event Schedule, **at the latest ten (10) working days before the event's deadline for Definite Entries**.

Events for which the FEI has not received the documented risk assessment and mitigation measures plan in accordance with article 2.1.g) of the Policy **will be removed from the FEI calendar** in accordance with Article 112.3 of the FEI General Regulations.

#### ASSUMPTION OF RISK / WAIVER OF LIABILITY

In consideration of being allowed to participate in the Event and related activities, all Participants (as defined in the Policy) acknowledge, appreciate, and agree that:

1. Participation includes possible exposure to and illness from infectious diseases including but not limited to COVID-19. While particular rules and personal discipline may reduce this risk, the risk of serious illness and death does exist; and,
2. The Participants knowingly and freely assume all such risks, both known and unknown, even if arising from the negligence of the OC or others, and assume full responsibility for their participation; and,
3. The Participants willingly agree to comply with the stated and customary terms and conditions for participation as regards protection against infectious diseases. If, however, a Participant observes any unusual or significant hazard during his/her presence or participation, the Participant will remove himself/herself from participation and bring such to the attention of the nearest official immediately; and,
4. The Participants, for themselves and on behalf of their heirs, assigns, personal representatives and next of kin, HEREBY RELEASE AND HOLD HARMLESS THE OC AND THE FEI, their officers, officials, agents, and/or employees, other participants, sponsoring agencies, sponsors, advertisers, and if applicable, owners and lessors of premises used to conduct the event ("RELEASEES"), WITH RESPECT TO ANY AND ALL ILLNESS, DISABILITY, DEATH, or loss or damage to person or property, WHETHER ARISING FROM THE NEGLIGENCE OF RELEASEES OR OTHERWISE, to the fullest extent permitted by law.

The Participants confirm to have read this release of liability and assumption of risk agreement, fully understand its terms, understand that they have given up substantial rights.

### 2. MEDICAL INFORMATION FORM FOR ARMBANDS

#### Declaration of medical condition

Athletes with medical conditions that may be relevant in the case of a medical emergency are responsible, at every Event when riding, for wearing a medical data carrier\* from a system provider able to communicate information at least in English. Alternatively (and at the minimum) a medical armband of good quality can be used. Athletes who chose to wear an armband should download and fill the form available for this purpose on the FEI's website <http://inside.fei.org/fei/your-role/officials/eventing/forms>.

*\* Medical data carrier (also called "medical identification tag"): small emblem or tag worn on a bracelet, neck chain, or on the clothing, intended to alert paramedics/physicians/ first responders that the wearer has an important medical condition.*

Conditions that are relevant include recent head injury, serious past injuries/surgery, chronic health problems such as diabetes, long-term medications and allergies. If in doubt, the athlete should discuss this with his own treating physician."

### **3. INSURANCES AND NATIONAL REQUIREMENTS**

Equestrian sports involve inherent dangerous risks. To the greatest extent permitted by law, the FEI and the FEI Event Organiser shall NOT be liable for any damages relating to loss of property or injury of any kind to Athletes, Owners, Support Personnel or Horses at or in connection with an FEI Event and the FEI expressly excludes all such liability.

#### **3.1 ATHLETES, OWNERS AND SUPPORT PERSONNEL**

##### **3.1.1 Personal accident and health insurance**

It is your responsibility as an Athlete/Owner/ Support Personnel to ensure that you have adequate personal accident insurance in place to cover your participation at FEI Events and in particular to insure against any personal injury or medical expenses arising from an accident, injury or illness which may occur at a FEI Event.

You should check with your National Federation to confirm if your National Federation's insurance policy (if any) covers personal accidents and/or illnesses, which may occur when you are attending at/participating in FEI Events.

If your National Federation does not have a personal accident/health insurance policy or if the National Federation's insurance policy does not cover personal accident or health claims, then you should obtain your own personal accident and health insurance policy to cover your attendance/participation at FEI Events.

##### **3.1.2 Press equipment**

Press equipment and other items left in the Press workroom, Press lockers, the Press Tribune or anywhere on the showgrounds are left entirely at the owner's risk. The Organising Committee does not accept any responsibility for any loss or damage to such equipment or items. Members of the Press are advised not to leave any equipment or personal items unattended.

##### **3.1.3 Personal property insurance**

You should also ensure that you are insured against property loss, theft or damage, which may occur at an FEI Event.

Again, the advice is to check with your National Federation to confirm if they have an insurance policy in place, which would cover you in case of such property loss, theft or damage. If not, then you should obtain your own personal property insurance to cover such situations.

#### **3.2 ATHLETES AND OWNERS**

##### **3.2.1 Third party liability insurance**

As an Athlete/Owner you are personally responsible for damages to third parties caused by you, your employees, Support Personnel, your agents or your Horses. You are, therefore, strongly advised to take out third-party liability insurance providing full coverage in relation to FEI Events at home and abroad, and to keep the policy up to date.

The FEI and the Organiser will NOT be responsible for any damage caused to third parties by you, your employees, Support Personnel, your agents or your Horses.

##### **3.2.2 Additional liability information**

No additional information

##### **3.2.3 Horse insurance**

As an Owner you should ensure that your Horses are adequately insured against any injuries or illnesses they may sustain

while participating at a FEI Event.

#### **4. PROTESTS / APPEALS**

To be valid, all Protests and Appeals must be made in writing and accompanied by a deposit of CHF 150.- or equivalent.

Protest and appeal forms are available on the FEI website:

**Protests:** <http://inside.fei.org/sites/default/files/FEI%20Protest%20Form.pdf>

**Appeals:** <http://inside.fei.org/sites/default/files/FEI%20Appeal%20Form.pdf>

#### **5. DISPUTES**

In the event of any discussion concerning the interpretation of the schedule (in translated languages), the English version will be decisive.

#### **6. MODIFICATION TO SCHEDULE**

In exceptional circumstances, together with the approval of Chefs d'Equipe, host NF delegate, if any, and the Ground Jury, the Organiser may change the schedule in order to clarify any matter arising from an omission or due to unforeseen circumstances. Any such changes must be notified to all athletes and officials as soon as possible and they must be reported to the FEI Secretary General by the Technical Delegate.

#### **7. ADDITIONAL INFORMATION FROM THE ORGANISER**

No additional information

#### **8. MINIMUM AGE LIMITATION**

Level	Athletes	Horses
1*	12	5
2*	14	6
3*	16	6
4*	18	7
5*+CH4*	18	8

#### **9. PRIZE MONEY DISTRIBUTION**

##### **IMPORTANT**

**The total amount of prize money shown for each Competition in the schedule must be distributed. (FEI General Regulations articles 127 and 128)**

The value of the **1st prize must not exceed 1/3 of the total prize money** distributed for the competition. The minimum number of prizes offered for each competition must be allocated on the basis of one prize for every commenced four Athletes, with a minimum of five prizes.

##### **DEDUCTIONS FROM PRIZE MONEY AT COMPETITIONS**

Full details of any deductions from prize money must be outlined in the schedule. This includes government taxes. If it is necessary for Organisers to deduct such taxes, they must provide participants with an official form indicating the amount of tax deducted.

The tax form must be provided to the athletes upon arrival and returned to the Organiser prior to departing.

## **XV. ANNEXES**

---

### **1. STEWARDING**

If an athlete is uncertain as to whether the boots he/she intends to use during an event are allowed, he/she or his/her representative should show the boots to the Chief Steward for his/her opinion before the boots are used in training or in competition.

In addition, athletes are to be made aware that hind boots must be removed and placed again on the horse's legs in the presence of a Steward while in the warm-up arena prior to entering the competition arena for certain competitions. (If bandages are used in place of boots, athletes are not required to remove the bandages in the warm-up arena.) This procedure is compulsory for competitions for which boot and bandage control is mandatory, that is the Nations Cup, Championships, and the competition with the highest prize money, and is at the discretion of the Chief Steward for other competitions.

As an alternative to carrying out this procedure at the time designated by the Steward an athlete may ask his/her groom to take the boots to the in-gate and place them on the horse's legs in front of the Steward prior to the combination entering the arena.

The Steward has the authority to intervene if a boot is deemed excessively tight by instructing that the boot be removed and put on again correctly. [Stewards are to note that it is normal for a horse's gait to be somewhat affected immediately after boots have been removed and re-placed.] If an athlete or his/her groom refuses to remove and re-place the boot(s) when instructed to do so by the Steward, a Yellow Warning Card will be issued to the athlete in question.

If it is deemed impossible or unsafe to remove the hind boots in the warm-up arena prior to the combination entering the competition arena, due to an extremely excited or nervous horse, the boots of the horse in question are to be removed by the athlete/groom following the athlete's round upon leaving the arena and inspected by the Steward. This inspection may be carried out during the boot and bandage control if the boot and bandage control is carried out for the competition in question.

This procedure does not replace boot and bandage control after completion of an athlete's round for competitions for which boot and bandage control is mandatory (refer to JRs Art. 244.1)