

This document contains:

- The Event Covid-19 risk assessment and risk mitigation plan in accordance with the [FEI Policy for Enhanced Competition Safety during the Covid-19 Pandemic](#)
- The Event Approved Schedule

Given the current covid-19 situation, please note that the FEI's approval of a Schedule should not be taken as an absolute guarantee that the Event will definitely go ahead. The decision whether the Event can take place must be made by the OC and NF in close consultation with the applicable domestic government and public health authorities. It is the responsibility of each Participant to check the status of the Event prior to planning his/her travel to the Event.

Mass gathering risk assessment for COVID-19: addendum for sporting events

The questions below will enable sport event organizers to review the additional considerations specific to sporting events involving mass gatherings, and thus inform their risk assessment of COVID-19 associated with the event. This will help organizers to understand and manage any additional risk from COVID-19. The risk assessment should be reviewed and reassessed regularly during the planning phase and updated immediately prior to the transition to the operational phase, especially in light of the rapidly evolving nature of the outbreak. Reference should be made to the latest technical guidance and situation reports on the WHO website.

The risk assessment for COVID-19 associated with the sporting event must be coordinated and integrated with the host country's national risk assessment for COVID-19. The person completing the questionnaire should include input from the local public health authorities, consult WHO's latest technical guidance and ensure that there is an up-to-date evaluation of the epidemiological situation.

Risk assessment

Please answer Yes (1) or No (0) to the following questions to determine a risk assessment score that incorporates factors specific to mass gathering sporting events

Additional risk of COVID-19 to the mass gathering sporting event	Yes (1)/No (0)	Score
Will the event be held in a country that has documented active local transmission of COVID-19 (community spread)?	1	1
Will the event be held in a single venue or multiple venues/cities/countries? (single venue = 0; multiple venues = 1)	0	0
Will the event include international participants (athletes and spectators) from countries that have documented active local transmission of COVID-19 (community spread)?	1	1
Will the event include a significant number of participants (athletes or spectators) at higher risk of severe COVID-19 disease (e.g., people over 65 years of age or people with underlying health conditions)?	0	0
Will the event include sports that are considered at higher risk of spread for COVID-19 (eg, contact sports)?	0	0
Will the event be held indoors? (Yes = 1; No = 0)	0	0
Total COVID-19 risk score		2

Mass gathering mitigation checklist for COVID-19: addendum for sporting events

Mitigation measures assess the current effort and planning to reduce the risk of spread of COVID-19 disease for the event. As mitigation measures can reduce the overall risk of the mass gathering contributing to the spread of COVID-19, they should be taken into account after the risk assessment has occurred to gain a clearer understanding of the overall risk of transmission and further spread of COVID-19, should the mass gathering be held. Together with the risk assessment score, the mitigation measure will contribute to the decision matrix and influence the assessment of the overall risk of transmission and further spread of COVID-19 in relation to the mass gathering.

Topic	Key consideration	Score Yes/Completed (2), Maybe/In progress (1), No/Not considered (0)	Weighting	Total score	Comments
Understanding of the overview of the current COVID-19 situation by the event organizers	Have the relevant organizers and responsible staff been informed about the latest available guidance on the COVID-19 outbreak (official web resources available from WHO, CDC, ECDC, UN, local public health authorities)? And are the organizers and staff concerned committed to following the available guidance?	2	1	2	(https://www.who.int/publications-detail/key-planning-recommendations-for-mass-gatherings-in-the-context-of-the-current-covid-19-outbreak)
	Are organizers aware of global and local daily situation reports as provided by WHO or local public health authorities?	2	1	2	
	Do the organizers and responsible staff understand the risks and transmission routes of COVID-19, the steps that event attendees can take to limit spread, the recognized best practices (including respiratory etiquette, hand hygiene, physical distancing, etc.), and the travel restrictions adopted by different countries that may affect the mass gathering?	2	1	2	
Event emergency preparedness and response plans	Has a contingency medical response plan for COVID-19 been developed for this mass gathering sporting event?	2	3	6	
	Does the contingency medical response plan include information about how attendees should interact with the host country healthcare system (e.g. hotline/helpline telephone number, medical teams and first-aid points for the mass gathering, local health care system)?	2	3	6	
	Is there an Emergency COVID-19 Outbreak Response Coordinator/Team in the organizing committee or other structure structure for the mass gathering with defined roles and responsibilities, coordinating the health preparedness and response planning for the outbreak?	2	2	4	
	Has the host country or organizer requested support from WHO and/or local public health authorities ?	2	3	6	
	Have the organizers of the mass gathering event acquired the following supplies to help reduce the risk of transmission of COVID-19?				
	Personal protective equipment (e.g. masks, gloves, gowns) for onsite medical personnel	2	3	6	
	Hand sanitizer and alcohol rubs/gels, tissues, frequently replaced soap canisters and closed bins for safe disposal of hygienic materials (e.g. tissues, towels, sanitary products) in washrooms and changing rooms	2	3	6	
	Hand sanitizers and alcohol rubs for all entrances and throughout the venue	2	3	6	
	If a person feels unwell/ shows symptoms of an acute respiratory infection during the event:				
	Is there a procedure for athletes or spectators to clearly identify whom to contact and how to do so if they or other event participants feel unwell?	2	3	6	

	Is there a protocol on whom meeting organizers should contact in the host country to report suspected cases and request testing and epidemiological investigations?	2	3	6	
	Are first-aid services or other medical services in-place and equipped to support patients with respiratory symptoms?	2	2	4	
	Are there isolation rooms or mobile isolation units available onsite?	2	2	4	
	Are there any designated medical facilities that manage patients with COVID-19 infection in the host country?	2	2	4	
	Are there transportation services with trained medical professionals available to transport critically ill patients with severe acute respiratory infections to a hospital or to evacuate them from the host country, if necessary?	2	2	4	
	Has a cleaning schedule been developed to ensure the venue is clean and hygienic – wiping surfaces and any equipment regularly with disinfectant is strongly recommended (before, during and after the event and between each round of competition)?	2	3	6	
	Are there established screening measures , including temperature checks in place for participants at the point of entry, venues, routes and on-site medical facilities (first-aid points)? (Please specify in Comments what these screening measures include)	2	3	6	
	Is the host country conducting COVID-19 laboratory diagnostic tests ? (If Yes, please specify in comments the type of COVID-19 diagnostic test used)	2	3	6	
	Does the host country have a national public health emergency preparedness and response plan that can address severe respiratory diseases, including COVID-19?	2	2	4	
	Is there a preliminary agreement by the host country to provide care for any COVID-19 cases connected with the mass gathering?	2	3	6	
	If the event is for a duration of 14 days or longer, does the medical response plan for the event include resources and protocols for managing all public health interventions that would be necessary and supporting the national public health authorities if participants are infected and become unwell at the event? (If the event is for less than 14 days, please score 0)	0	3	0	
	If the event is for less than 14 days, does the medical response plan include protocols for organizers to notify all participants of possible exposure to COVID-19 if the organizers are made aware of any suspected or confirmed cases that attended the event? (If the event is for 14 days or longer, please score 0)	2	3	6	
Stakeholder and partner coordination	Is there an established mechanism for collaboration and coordination between the health and security sectors , which is considered as crucial?	2	2	4	
	Are there agreed, clear and easily understood processes in place for reporting to external multi-sectoral stakeholders (including surveillance authorities, WHO, CDC, ECDC, etc.) and disseminating risk communication messages (Media)?	0	2	0	
Command and control	Is there a decision-making authority/body and an agreed procedure to modify, restrict, postpone or cancel the mass gathering sporting event related to the evolving COVID-19 outbreak?	2	3	6	
	Are there arrangements to activate a strategic health operations centre if there are suspected COVID-19 cases in connection with the sporting mass gathering?	0	2	0	
	Have the mass gathering organizers and staff undergone training and exercises on personal safety procedures and emergency mitigation measures (including those specifically listed in this checklist)?	2	3	6	
	Is there a risk communication strategy for the sporting mass gathering in regard to COVID-19?	2	3	6	

Risk communication	Is there a designated person(s) to lead media activities and tasked with managing all external communications with national and international government officials, the general public, and the media? (If yes, please identify the spokesperson in comments)	2	2	4
	Has there been monitoring of national and international media and social media established for rumours to be able to counter them early? (Please explain in the comments what protocols are in place for counter messaging)	2	2	4
	Has coordination been set up with major official media channels and social media sites such as Twitter, Facebook and Instagram so that messaging can be coordinated with, and assisted by, the platforms to provide targeted messaging from organizers (including messaging to counter fake news and rumours, and proactive messaging about the status of the mass gathering, including changes)?	2	2	4
Public health awareness of COVID-19 before and during the event	Has public health advice on clinical features of COVID-19, preventive measures, especially respiratory etiquette, hand hygiene practices, and physical distancing, been shared with all staff involved in the event, athletes, the public, and personnel of all relevant stakeholders?	2	3	6
	Has information on the at-risk populations been provided to all athletes, the public and others so they may make an informed decision on their attendance based on their personal risks?	2	3	6
	Has public advice included information on the meaning of the following measures: quarantine, self-isolation and self-monitoring ?	2	2	4
Surge capacity	Are there any surge arrangements in place in the event of a public health emergency during the mass gathering - (i.e. suspected and confirmed cases of COVID-19?			
	Do these surge arrangements include funding for mitigation measures?	2	3	6
	Do these surge arrangements include stockpiles of equipment (e.g. personal protective equipment, etc.)	2	3	6
	Do these surge arrangements include training of extra staff?	2	2	4
	Do these surge arrangements include volunteers?	2	2	4
Specific mitigation measures	Will there be daily health checks of athletes/competitors?	2	2	4
	Will the athletes be separated from other groups , such as officials, support staff and spectators, to limit transmission?	2	2	4
	Are there measures in place to limit the sharing of equipment, water bottles, towels, etc. ?	0	3	0
	Will athletes be given closed containers to allow for the safe disposal or storing of all hygienic materials (e.g. tissues, towels, etc.)?	0	3	0
	Will the sporting event have designated seating for all spectators?	2	3	6
	Does the designated seating provided allow for physical distancing between spectators (minimum of 1 metre)?	2	2	4
	Have pre-travel health checks been performed on all athletes to ensure underlying co-morbidities, medications, allergies, etc. are documented?	0	2	0

Sum of mitigation measures	196
Total mitigation score (%)	89

196

Mass gathering overall risk score: addendum for sporting events

The decision matrix takes the risk score and the mitigation score to provide a colour determination. This colour determination identifies the total risk of transmission and further spread of COVID-19 in relation to the mass gathering. The "Colour Determination" key below the decision matrix describes the total risk for each colour.

Total COVID-19 risk score (from "Risk Assessment" Tab)	2
--	---

Total mitigation score (from "Mitigation Checklist" Tab)	89
--	----

Risk Vs. Mitigation Matrix

Total Risk Assessment Score	Very Prepared to Mitigate COVID-19 Impacts (76-100)	Somewhat Prepared to Mitigate COVID-19 Impacts (51-75)	Somewhat Unprepared to Mitigate COVID-19 Impacts (26-50)	Very Unprepared to Mitigate COVID-19 Impacts (0-25)
0 - Negligible	Very low	Very low	Very low	Very low
1 - Very Low Risk	Very low	Very low	Low	Low
2 - Low Risk	Low	Low	Low	Moderate
3 - Moderate Risk (low-moderate)	Low	Moderate	Moderate	Moderate
4 - Moderate Risk (high-moderate)	Moderate	Moderate	High	Very High
5 - High Risk	High	High	Very High	Very High
6 - Very High Risk	Very High	Very High	Very High	Very High

KEY FOR COLOUR DETERMINATION OF OVERALL RISK	
VERY LOW	Overall risk of transmission and further spread of COVID-19 in relation to the mass gathering is considered <u>very low</u> .
LOW	Overall risk of transmission and further spread of COVID-19 in relation to the mass gathering is considered <u>low</u> . Recommend checking whether mitigation measures can be strengthened.
MODERATE	Overall risk of transmission and further spread of COVID-19 in relation to the mass gathering is considered <u>moderate</u> . Recommend <u>significant</u> efforts to improve mitigation measures or reduce risk of transmission (decrease risk assessment score).
HIGH	Overall risk of transmission and further spread of COVID-19 in relation to the mass gathering is considered <u>high</u> . Recommend <u>significant</u> efforts to improve <u>both</u> mitigation measures and reduce risk of transmission (decrease risk assessment score).
VERY HIGH	Overall risk of transmission and further spread of COVID-19 in relation to the mass gathering is considered <u>very high</u> .

CSI2* Zielona Góra (POL)

RISK MITIGATION PLAN



15-18.04.2021

Introduction

- Due to Covid-19 pandemic, we kindly ask you to familiarize with this document to minimise risk of infection.
- Despite following these Guidelines that are to reduce to minimum risk of infection with Covid-19 during the competition this risk is not eliminated.



Introduction

- Every Participant of the event is obliged to familiarize with these Guidelines. Negligence of acknowledgment of the Guidelines doesn't relive from the duty of following the rules
- All the Participants of the event (excluding Organiser's employees) are taking part voluntarily and on their own responsibility.
- All Participants are required to comply with the rules of social coexistence and conduct in accordance with applicable law and regulation of these Guidelines and other regulations in force in the competition established by the Organiser.
- All who decide to take part in the event (in any role) and are allowed to participate in the event by Organiser during the pandemic are doing so at their own risk.
- The Organising Committee doesn't take any responsibility for infection with Covid-19 of anyone taking part in the event.

+ Participant of the event

A Participant of the event is a person whose presence on the showground is essential for the sports competition, in particular:

- Competitor
- Supporting personnel- trainer, groom, horse owner and responsible person of a minor athlete
- Person responsible for horse transport
- Official
- Event staff
- Security staff
- TV operators

+ Restrictions of participation

The following restriction of participation in the event must be followed:

- The event takes place without spectators.
- A rider is entitled to accreditation for one groom per two horse if a rider has more than one horse.
- Additionally, a rider is entitled to accreditation for two assisting persons.
- Each National Federation is entitled to accreditation for one additional person to represent the National Federation.
- National Federation is obliged to send their full list of accredited individuals no later than two hours before opening the stables. Any additional list will not be accepted.
- Only healthy individuals with temperature less than 37.5 °C from the accredited list will be given access to the showground.
- Press Office will work only as remotely (online). The number of Press Office Staff will be limited.

+ The procedure of entering the showground

1. All the Participants of the event are entering the showground using only the entry or gate specified by Organiser. There's a clearly marked on the map control point located at the gate.
2. At the control point, Security Staff checks and verify all the participants from the list provided by National Federation, does a health interview and measures the temperature.
3. A measurement of the temperature is an obligatory procedure and it's anonymous.
4. If temperature is greater than 37.5 degrees C the person cannot enter the venue
5. Refusing to follow the procedure of taking the temperature results denning the access to the showground.
6. During the control procedure, Security Staff has a right to:
 - a) Ask for an ID document
 - b) Ask to leave the vehicle
7. Each Participant given the access the showground will be marked with a wristband.
8. In case of any health issues reported by any Participant Security staff will not give an access to the showground and will inform the Organiser and Medical Staff.



1. Hippodrome
2. Warm-up arena
3. Judge, show office, temperature measurement
4. Isolation space

5. Lorries park
6. Stable zone
7. Stable gate, control point
8. Entrance for participants
9. Lorries entry, control point

+ The procedure of entering the showground

Each Participant is responsible for going through the control point and the procedure of entering the showground to get the wristband for the day.

Entering the showground without the wristband will result with an admin charge 100 EUR and in case of repeated violation of the rules expelling from the showground.

+ Entry authorisation

Stable gate:

01

Accredited Participants

02

Staff

Entrance for participants :

01

Officials

02

Staff

03

Media & Sponsors &
Exhibitors & Catering

+ Security on the showground

1. Each of the Participants must :
 - a) Cover the mouth and nose using the mask and keep a 2 m distance from other participants in the same space; this rule excludes an Athlete sitting on the horse;
 - b) Systematic sterilising hands at the stations located in toilets area, show office, competition zone, stables.
2. The Organiser will assign a Steward who with cooperation with the Organiser will coordinate and supervise the security system especially the logistic of Participants, access to sanitizers, covering mouth and nose by Participants.
3. All the rooms used during the event will be disinfected after each day of the event.

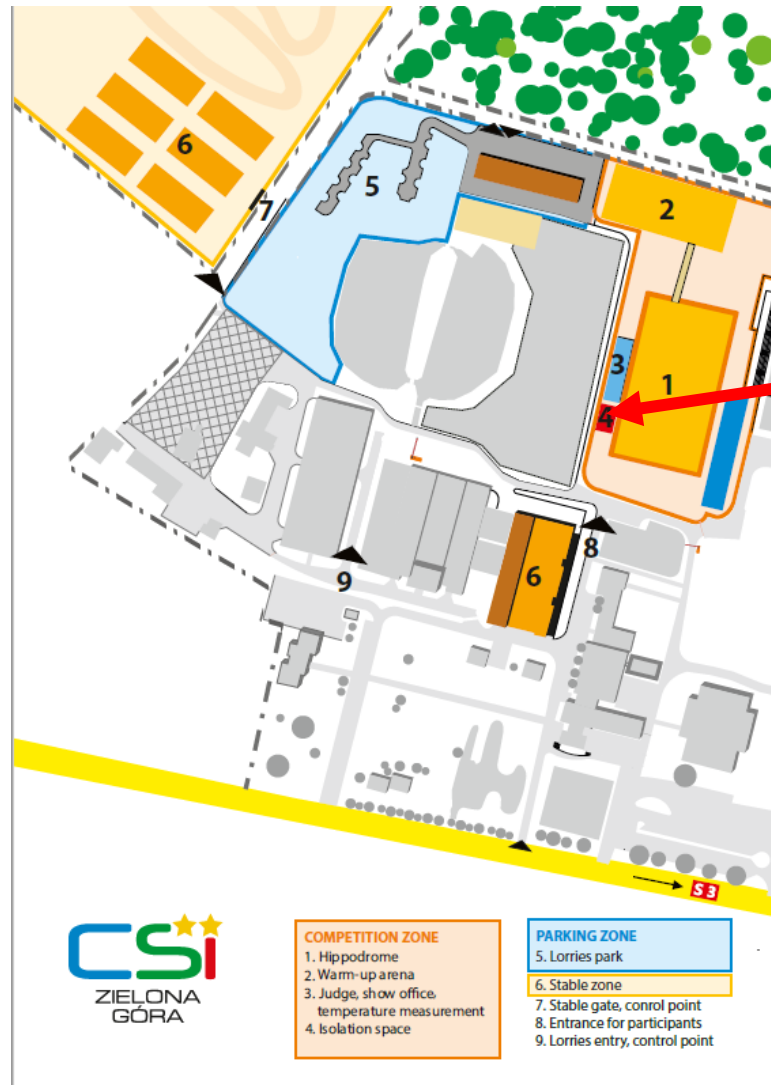
+ Security on the showground

The most common symptoms of Covid-19 are fever, dry cough, and tiredness. Other symptoms that are less common and may affect some patients include aches and pains, nasal congestion, headache, conjunctivitis, sore throat, diarrhoea, loss of taste or smell or a rash on skin or discoloration of fingers or toes. These symptoms are usually mild and begin gradually (Source: WHO website: <https://www.who.int/emergencies/diseases/novel-coronavirus-2019/question-and-answers-hub/q-a-detail/q-a-coronaviruses>) and the Participants must immediately:

1. Go to the assigned by the Organiser isolation space.
2. Call the Organizer on 0048 792 345 080.

The Organiser will contact with the Regional Sanitary and Epidemiological Station, competent for the showground of the event, or the 24-hour NFZ hotline 800-190-590.

+ Security on the showground



Isolation space for individuals with symptoms of Covid-19

+ Limitations and guidelines for specific groups of Participants

Athletes

- Athletes can access Car Park zone, Stables, Show Office and Competition zone where they need to keep 2m of social distance and wear a mask.
- Minor Athletes can be accompanied by his/her representative (one per Athlete).
- Athletes are not allowed in the Ground Jury box. All the issues are solved remotely. All official protests are managed in the Show Office as per PZJ and FEI rules.
- Course walking takes place with keeping 2m social distance rule.

+ Limitations and guidelines for specific groups of Participants

TRAINERS

- Trainers can access Car Park zone, Stables, Show Office and Competition zone where they need to keep 2m of social distance and wear a mask.
- Because of limitations of direct contact, the trainer is allowed to enter the warm up area only when the rider is jumping, 15 min before the start.

+ Limitations and guidelines for specific groups of Participants

GROOMS AND SUPPORTING TEAM

- Grooms can access Car Park zone, Stables and Competition zone outside the warm up area and competition area where they need to keep 2m of social distance and wear a mask.
- In case the rider is not accompanied by the trainer, the groom is allowed to enter the warm up area only when the rider is jumping, 15 min before the start.
- Supporting Team can access Car Park zone, Stables and Competition where they need to keep 2m of social distance.

+ Limitations and guidelines for specific groups of Participants

OFFICIALS

- Officials e. judges, scribes, Ground Jury wear a mask.
- Officials will be given disposable gloves.

+ Limitations and guidelines for specific groups of Participants

CAR PARK ZONE

- Only Participants of the Event have access to Car Park Zone.
- A distance of 2m between vehicles have to be kept.
- All Participants in the Car Park Zone has to keep 2m distance and wear a mask.
- Any gathering of more than 5 people are strictly forbidden in Car Park Zone.

+ Limitation - Officials

- Only Officials and essential staff responsible for running the test are allowed in GJ box area.
- The distance between each working post must be 25m or post have to be divided with a screen and everyone has to wear a head shield.

+ Limitations in the Show Office

- The distance between each working post must be 2 m or post have to be divided with a screen and everyone has to wear a head shield.
- The number of people allowed in the Show Office is determined on the square meter space- the coefficient should be 10m² per 1 person under condition there's one person being served at the post.
- Access to Show Office is only limited to Staff, Officials, Athletes and Supporting Team.

+ Limitations for media

1. Press Office will work only as remotely (online).
2. The number of Press Office Staff will be limited, only for accredited press.
3. Access to the showground is only given to:
 - Press Office Staff- press staff, social media staff, photo staff, video staff
 - Media Partners representative- one per editorial
 - FEI accredited media- FEI TV, photographer
 - TV coverage staff
 - Online coverage staff
 - The Organiser will run a Media Room during the event, to be used only by people mentioned above under condition of following 2m social distance rule or wearing a head shield

All Media representatives are to fill in the health check form and follow the procedure of temperature measurement every day. Also, they must inform the Organiser about the most common symptoms of Covid 19.

The most common symptoms of Covid-19 are fever, dry cough, and tiredness. Other symptoms that are less common and may affect some patients include aches and pains, nasal congestion, headache, conjunctivitis, sore throat, diarrhoea, loss of taste or smell or a rash on skin or discoloration of fingers or toes. These symptoms are usually mild and begin gradually. (Source: WHO website: <https://www.who.int/emergencies/diseases/novel-coronavirus-2019/question-and-answers-hub/q-a-detail/q-a-coronaviruses>).

+ Limitations for Sponsors

The number of Sponsor representatives who will have access to the showground and to the specific zones will be limited.

- The Organiser allows entering a group of max. of 5 people under the condition of keeping 2m social distance rule or use of masks or face shield, need to cover nose and mouth
- The Organiser will not open hospitality zone for Sponsors
- Sponsor representatives are only allowed to access Competition zone

All Sponsor representatives are to fill in the health check form and follow the procedure of temperature measurement every day. Also, they must inform the Organiser about the most common symptoms of Covid 19.

The most common symptoms of Covid-19 are fever, dry cough, and tiredness. Other symptoms that are less common and may affect some patients include aches and pains, nasal congestion, headache, conjunctivitis, sore throat, diarrhoea, loss of taste or smell or a rash on skin or discoloration of fingers or toes. These symptoms are usually mild and begin gradually. (Source: WHO website: <https://www.who.int/emergencies/diseases/novel-coronavirus-2019/question-and-answers-hub/q-a-detail/q-a-coronaviruses>).

+ Limitations for trade stands

1. The number of trade stands at the event is limited. The Organiser only allows:
 - Trade & exhibition stands of Sponsors
 - Trade and exhibition stands with products for riders and horses.
2. All the stands at the event must follow the Guidelines of Polish government on providing safety for employees and customers during a pandemic.
 - The distance between the employees should be 2 m and if that's impossible all employees should have Personal Protective Equipment (gloves, masks).
 - All staff serving customers must wear gloves and masks
 - All individuals queuing should keep min. 2m distance
 - At the entrance and at the till point there should be hand sanitizer available

All the staff of trade stands is to fill in the health check form and follow the procedure of temperature measurement every day. Also, they must inform the Organiser about the most common symptoms of Covid 19. The most common symptoms of Covid-19 are fever, dry cough, and tiredness. Other symptoms that are less common and may affect some patients include aches and pains, nasal congestion, headache, conjunctivitis, sore throat, diarrhoea, loss of taste or smell or a rash on skin or discoloration of fingers or toes. These symptoms are usually mild and begin gradually. (Source: WHO website: <https://www.who.int/emergencies/diseases/novel-coronavirus-2019/question-and-answers-hub/q-a-detail/q-a-coronaviruses>).

+ Limitations for hospitality/ catering

All the stands at the event must follow the Guidelines of Polish government on providing safety for employees and customers during a pandemic.

- The distance between the employees should be 2 m and if that's impossible all employees should have Personal Protective Equipment (gloves, masks).
- All cooks and staff serving customers must wear gloves and masks
- All individuals queuing should keep min. 2m distance
- At the order collecting points and till points there should be hand sanitizer available
- Tables should have a min. 2m distance.
- All the tables should be disinfected after each use.

All the hospitality/ catering staff is to fill in the health check form and follow the procedure of temperature measurement every day. Also, they must inform the Organiser about the most common symptoms of Covid 19. The most common symptoms of Covid-19 are fever, dry cough, and tiredness. Other symptoms that are less common and may affect some patients include aches and pains, nasal congestion, headache, conjunctivitis, sore throat, diarrhoea, loss of taste or smell or a rash on skin or discoloration of fingers or toes. These symptoms are usually mild and begin gradually. (Source: WHO website: <https://www.who.int/emergencies/diseases/novel-coronavirus-2019/question-and-answers-hub/q-a-detail/q-a-coronaviruses>).

+ Appendix

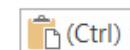
FORM - HEALTH INTERVIEW



HEALTH INTERVIEW

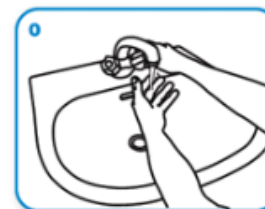
- 1) Were you diagnosed with SARS CoV-2 in the last 14 days?
☐ Yes ☐ No
- 2) Did you have contact with the person diagnosed with SARS CoV-2 in the last 14 days?
☐ Yes ☐ No
- 3) Is your child/pupil or anyone in your household in quarantine now?
☐ Yes ☐ No
- 4) Do you or anyone in your household have the most common symptoms of Covid-19. The most common symptoms of Covid-19 are fever, dry cough, and tiredness. Other symptoms that are less common and many affect some patients include aches and pains, nasal congestion, headache, conjunctivitis, sore throat, diarrhoea, loss of taste or smell or a rash on skin or discoloration of fingers or toes. These symptoms are usually mild and begin gradually.
☐ Yes ☐ No
- 5) Does anyone in your household had any symptoms mentioned above in the last 14 days?
☐ Yes ☐ No

Stowarzyszenie Klub Sportowy Jumping Events, zarejestrowany w Krajowym Rejestrze Sądowym w Sądzie Rejonowym Poznań – Nowe Miasto i Wilda w Poznaniu, VIII Wydział Gospodarczy Krajowego Rejestru Sądowego pod numerem 0000438090, numer NIP: 7822553869, Regon 302266721 z siedzibą przy ul. Chotomińskiej 41 A 61-311 Poznań
Tel: 792 345 080, e-mail: Office@tarantevents.pl

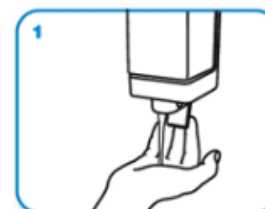


+ Appendix

CLEAN HANDS PROTECT AGAINST INFECTION



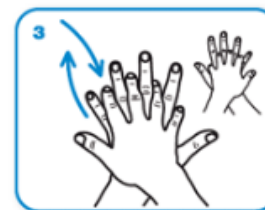
Wet hands with water



apply enough soap to cover all hand surfaces.



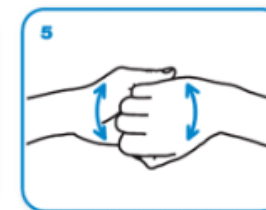
Rub hands palm to palm



right palm over left dorsum with interlaced fingers and vice versa



palm to palm with fingers interlaced



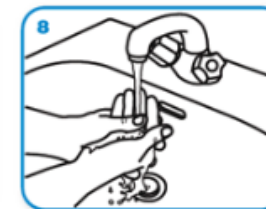
backs of fingers to opposing palms with fingers interlocked



rotational rubbing of left thumb clasped in right palm and vice versa



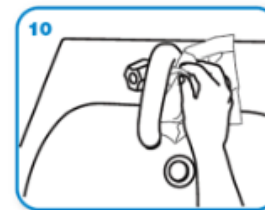
rotational rubbing, backwards and forwards with clasped fingers of right hand in left palm and vice versa.



Rinse hands with water



dry thoroughly with a single use towel



use towel to turn off faucet



...and your hands are safe.

+ Appendix

HOW TO WEAR MASK SAFELY



I. DENOMINATION OF THE EVENT

Venue: Zielona Góra

Date: 15-18.04.2021

NF: POL

Indoor: ☐

Outdoor: ☒

EVENT CATEGORIES:

CSIO5*	<input type="checkbox"/>	CSI5*-W	<input type="checkbox"/>	CSI5*	<input type="checkbox"/>	CSIU25-A	<input type="checkbox"/>	CSIU25-B	<input type="checkbox"/>
CSIO4*	<input type="checkbox"/>	CSI4*-W	<input type="checkbox"/>	CSI4*	<input type="checkbox"/>	CSIY-A	<input type="checkbox"/>	CSIY-B	<input type="checkbox"/>
CSIO3*	<input type="checkbox"/>	CSI3*-W	<input type="checkbox"/>	CSI3*	<input type="checkbox"/>	CSIJ-A	<input checked="" type="checkbox"/>	CSIJ-B	<input type="checkbox"/>
CSIO2*	<input type="checkbox"/>	CSI2*-W	<input type="checkbox"/>	CSI2*	<input checked="" type="checkbox"/>	CSIch-A	<input type="checkbox"/>	CSIch-B	<input checked="" type="checkbox"/>
CSIO1*	<input type="checkbox"/>	CSI1*-W	<input type="checkbox"/>	CSI1*	<input type="checkbox"/>	CSIV-A	<input type="checkbox"/>	CSIV-B	<input type="checkbox"/>
CSIOY	<input type="checkbox"/>			CSIL1*	<input type="checkbox"/>	CSIAm-A	<input type="checkbox"/>	CSIAm-B	<input type="checkbox"/>
CSIOJ	<input type="checkbox"/>			CSIYH2*	<input type="checkbox"/>	CSIP	<input type="checkbox"/>		
CSIOp	<input type="checkbox"/>			CSIYH1*	<input checked="" type="checkbox"/>				
CSIOCh	<input type="checkbox"/>								

Championship ☐

Games ☐

II. GENERAL CONDITIONS

- FEI Statutes, 24th edition, effective 19 November 2019
- FEI General Regulations, 24th edition, 1st January 2020, updates effective 1st January 2021
- FEI Veterinary Regulations, 14th edition, 1 January 2018, updates effective 1st January 2021
- The Jumping Rules and its Annexes, 26th edition 1 January 2018, updates effective 1 January 2021
- <https://inside.fei.org/fei/regulations/jumping>
- CSI/CSIO Prize Money requirements 2020 – To be applied also for 2021
<https://inside.fei.org/sites/default/files/Final%20CSIs-CSIOs%20-%202020.pdf>
- Longines Rankings – Groups Categories 2020 – To be applied also for 2021
<https://inside.fei.org/sites/default/files/Final%20Longines%20Ranking%20Groups%20-%202020.pdf>
- Equine Anti-Doping and Controlled Medication Regulations (EADCMR), 3rd Edition, effective 1st January 2021
- FEI Anti-Doping Rules for Human Athletes (ADRHA), based upon the 2021 WADA Code, effective 1st January 2021
- The FEI Policy for Enhanced Competition Safety during the Covid-19 Pandemic, effective as of 1 July 2020 (updated 12 October 2020) and until further notice
- All subsequent published revisions/updates, the provisions of which will take precedence.

THE ANNEXE(S) IS/ARE PART OF THIS APPROVED AND SIGNED SCHEDULE AND MUST BE DISTRIBUTED TO ALL OFFICIALS AND NFs AND IS AVAILABLE TO OTHERS UPON REQUEST

Approved by the FEI, Lausanne, on 17/03/2021. Updated on 22/03/2021, 31/03/2021.

NB: No modifications to the approved Schedule will be accepted less than two weeks prior to the event. Additionally, no change may be made to a Longines Ranking competition once the schedule has been approved. Prizes in kind, to be accepted as prize money to count for Longines Ranking competitions and total event prize money, must be easily convertible into cash (GRs Art. 127).

TABLE OF CONTENTS

I.	DENOMINATION OF THE EVENT	1
II.	GENERAL CONDITIONS	1
III.	THE FEI CODE OF CONDUCT FOR THE WELFARE OF THE HORSE	3
IV.	GENERAL INFORMATION	4
1.	ORGANISER	4
2.	ORGANISING COMMITTEE	4
3.	EVENT DIRECTOR	4
4.	STABLE MANAGER.....	4
5.	ANNOUNCER	4
V.	OFFICIALS	5
VI.	INVITATIONS	6
1.	GENERAL.....	6
VII.	ENTRIES	9
1.	ENTRY DATES AND ENTRY FEES.....	9
2.	OTHER FEES	10
3.	NO-SHOWS/LATE WITHDRAWALS	11
VIII.	TIMETABLE.....	12
IX.	COMPETITION DETAIL.....	14
X.	FACILITIES OFFERED.....	22
1.	ATHLETES	22
2.	GROOMS.....	22
XI.	LOGISTICAL/ADMINISTRATIVE/TECHNICAL INFORMATION	23
1.	DRAW	23
2.	COMPETITION ARENA(S)	23
3.	PRACTICE ARENA(S)	23
4.	STABLES	23
5.	SAFETY CUPS.....	23
6.	TIMING DEVICE	23
7.	SCORING/TIMING PROVIDER.....	23
8.	OTHER TECHNOLOGY/SERVICE PROVIDER(S)	24
9.	PRIZE GIVING CEREMONY	24
10.	ADVERTISING ON ATHLETES AND HORSES.....	24
11.	TICKETING.....	24
12.	BETTING.....	24
13.	TRANSPORT REIMBURSEMENT HORSES / PONIES	24
14.	WELCOME.....	24
15.	LOCAL TRANSPORTATION - ARRANGEMENTS FROM HOTEL TO SHOWGROUNDS	24
16.	ENTRY RIGHT TO SHOWGROUNDS/ACCREDITED PERSONS.....	24
17.	SUSTAINABILITY.....	25
XII.	VETERINARY MATTERS.....	26
1.	CUSTOMS FORMALITIES	26
2.	HEALTH REQUIREMENTS	26
3.	NATIONAL REQUIREMENTS	26
4.	PONIES.....	26
5.	INJURY SURVEILLANCE.....	27
6.	TRANSPORT OF HORSES.....	27
7.	VENUE ARRIVAL INFORMATION & FITNESS TO COMPETE	27
8.	EQUINE ANTI-DOPING AND CONTROLLED MEDICATION PROGRAMME (EADCMP). FEI VETERINARY REGULATIONS,	

CHAPTER VII	28
XIII. HUMAN ANTI-DOPING	29
XIV. ADDITIONAL INFORMATION	29
1. THE FEI POLICY FOR ENHANCED COMPETITION SAFETY DURING THE COVID-19 PANDEMIC.....	29
2. INSURANCES AND NATIONAL REQUIREMENTS.....	30
3. PROTESTS/APPEALS.....	31
4. SCHOOLING DURING COMPETITIONS.....	31
5. STEWARDING.....	31
6. DISPUTES	32
7. MODIFICATION TO SCHEDULE	32
8. ADDITIONAL INFORMATION FROM THE OC.....	32
9. PRIZE MONEY DISTRIBUTION.....	34
10. MAXIMUM NUMBER OF STARTERS PER COMPETITION	35
11. GLOSSARY	36
XV. ANNEXES.....	38

III. THE FEI CODE OF CONDUCT FOR THE WELFARE OF THE HORSE

The Fédération Equestre Internationale (FEI) expects all those involved in international equestrian sport to adhere to the FEI's Code of Conduct and to acknowledge and accept that at all times the welfare of the horse must be paramount and must never be subordinated to competitive or commercial influences.

1. At all stages during the preparation and training of competition horses, welfare must take precedence over all other demands. This includes good horse management, training methods, farriery and tack, and transportation.
2. Horses and Athletes must be fit, competent and in good health before they are allowed to compete. This encompasses medication use, surgical procedures that threaten welfare or safety, pregnancy in mares and the misuse of aids.
3. Events must not prejudice horse welfare. This involves paying careful attention to the competition areas, ground surfaces, weather conditions, stabling, site safety and fitness of the horse for onward travel after the event.
4. Every effort must be made to ensure that horses receive proper attention after they have competed and that they are treated humanely when their competition careers are over. This covers proper veterinary care, competition injuries, euthanasia and retirement.
5. The FEI urges all involved with the sport to attain the highest levels of education in their areas of expertise.

The Long version of this Code can be obtained from the Fédération Equestre Internationale, HM King Hussein I Building, Chemin de la Joliette 8, 1006 Lausanne, Switzerland. Telephone: +41 21 310 47 47. The Code is available in English. The Code is also available on the FEI's website: <http://inside.fei.org/>.

IV. GENERAL INFORMATION

1. ORGANISER

Name: Klub Sportowy Jumping Events
Address: ul. Chotomińska 41A; 61-311 Poznań
Telephone: +48/792 345 080
Fax:
Email: agnieszkatarrant@gmail.com
Website: www.tarantevents.pl

Contact Details Show Ground:

Address: ul. Drzonków – Olimpijska 20; 66-004 Zielona Góra
Telephone: +48 792 345 080
GPS Coordinates: 51.89717 (+ = N, - = S), 15.56892 (+ = E, - = W)
Accessibility details (directions by road, nearest airport / train station):
Arrival by car – road A2 & S3
Arrival by train – station Zielona Góra Główna

2. ORGANISING COMMITTEE

Honorary President: Bogusław Sułkowski
President of the Event: Grzegorz Jaroszewski
Show Secretary: Agnieszka Tarant
Press Officer: Zuzanna Ostańska

3. EVENT DIRECTOR

Name: Grzegorz Jaroszewski
Address: ul. Chotomińska 41A 61-311 Poznań
Telephone: +48 792 345 080
Email: agnieszkatarrant@gmail.com

4. STABLE MANAGER

Name: Kaja Radzikowska
Telephone: +48 665 450 015
Email: kkaja.radzikowska@gmail.com

5. ANNOUNCER

Name: Zuzanna Ostańska
Email: zu.ostanska@gmail.com

V. OFFICIALS

Ref.	Panel	Function	FEI ID	Name	NF	Level	E-mail & Mobile
1	Ground Jury	Ground Jury President	10051395	Krystyna Kanclerz	POL	3	Chart81@wp.pl * +48 504 624 701
		Ground Jury Member	10119851	Justyna Olszak	POL	2	Justyna.olszak@interia.pl
		Ground Jury Member	10087601	Justyna Borysewicz - Rudy	POL	2	
2	Foreign Judge	Foreign Judge	10050109	Radovan Salek	CZE	3	radovan.salek@mail.cz * +42 06 02 744 140
3	Foreign Technical Delegate	Foreign Technical Delegate					
4	Course Designer	Course Designer	10052103	Szymon Tarant	POL	3	tarantevents@gmail.com +48 602 345 080
		Assistant Course Designer		Piotr Sokołowski	POL	N	
		Assistant Course Designer		Jerzy Gontowiuk	POL	N	
		Assistant Course Designer		Robert Musiał	POL	N	
		Assistant Course Designer		Daniel Miechowicz	POL	N	
5	Chief Steward	Chief Steward	10051305	Zbigniew Bojda	POL	3	zbojda@op.pl * +48 607 801 633
6	Foreign Steward	Foreign Steward					*
7	Assistants Stewards	Assistant Steward	10051303	Witold Bogacz	POL	3	
		Assistant Steward	10154096	Joanna Mularczyk-Czajka	POL	2	
		Assistant Steward	10116085	Grzegorz Kwaczyński	POL	2	
		Assistant Steward	10051240	Barbara Berezowska	POL	3	
8	FEI Veterinary Delegate	FEI Veterinary Delegate	10103844	Waldemar Kotowicz	POL		+48 601 247 374 waldemar.kotowicz@gmail.com
9	Veterinary Service Manager /Treating Veterinarian	Veterinary Service Manager	10095102	Michał Stanisławiak	POL		+48602731064
		FEI Permitted Treating Veterinarian	10095102	Michał Stanisławiak	POL		+48602731064
10	Medical Doctor	Medical Doctor		Robert Korzeniowski Transprt Sanitarny	POL		+48 602 43 61 12 *
11	Farrier	Farrier		Robert Musiał	POL		+48 518 383 959

Please note that the schedule has been approved under the provision that all appointed Officials have successfully passed the on-line FEI Competency Evaluation Test.

VI. INVITATIONS

1. GENERAL

Horses entered in one CSI star level may not enter another CSI star level at the same Event.

Horses may take part in national Competitions and international Competitions at the same Event only under the following conditions:

- Horses may take part in national Events up to two hours prior to the start of the international Event's Horse Inspection;
- If the national Event includes Competitions after the international Event ends, either on the same day or on the following day(s). Horses having taken part in the international Event may take part in national Competitions only, following the conclusion of the international Event.

Invitations

For all Events at which the CSI Invitation Rules apply, a certain percentage of Athletes must be invited in descending order of the Longines Ranking, a certain percentage of Athletes will be home Athletes selected by the host NF and a certain percentage will be Athletes invited by the Organising Committee (OC); the percentages for each invitation group are established for each star level as follows:

Event Level	Athletes from the Longines Ranking	Athletes selected by the host NF	OC Invitations
CSI 5*	60%	20%	20%
CSI 4*	50%	25%	25%
CSI 3*	40%	30%	30%
CSI 2*	30%	30%	40%
CSI 2* Open, option with no Longines Ranking Competitions if the number of invited Athletes is restricted	0%	20%	80%
CSI 2* Open, option with no Longines Ranking Competitions if the number of invited Athletes is unrestricted	N/A, CSI Invitation Rules do not apply to CSI Events at which the number of Athletes invited is not restricted.		

Longines Rankings

The Longines Rankings number 240, established three (3) months prior to this Event will be used for the invitation of Athletes. Athletes are invited through the FEI online Invitation System for Jumping in accordance with the CSI Invitation Rules (refer to Jumping Rules Annex V)

CSI 2* level:

Maximum number of Athletes to be invited: 200

Maximum number of Horses that may be entered: 600

Maximum number of Horses per Athlete: 3

Maximum number of Athletes	No. of Athletes	No. of Athletes	No. of OC
----------------------------	-----------------	-----------------	-----------

invited	from the Longines Ranking	selected by the host NF	Invitations
180	60	60	80

(OCs will be permitted to invite a limited number of additional Athletes, if, at the closing of entries, the maximum number of Horses that may be entered has not been reached. For details, please see the "Implementation of the FEI Online Invitation System for Jumping Guidelines".)

FEI Wild Cards:

CSI5*: 1

CSI4*/CSI3*/CSI2*: 2

Connected Events:

There are no connected Events in this show ☒

Section 1: Compulsory Invitations

Athletes can choose Events for which they wish to receive an information from the Monday eight weeks prior to the week of the Event until midnight GMT on the 4th Sunday prior to the Event.

Section 2: Home Athletes selected by the host NF

Entries for home Athletes in this section must be made through the FEI Entry System between the Monday eight weeks prior to the week of the Event until midnight GMT on the 3rd Wednesday prior to the week of the Event.

Section 3: OC Invitations

Entries in the OC Invitation Quota can be made in the FEI Entry System from the Monday eight weeks prior to the week of the Event up until the closing date for regular entries (the closing date for regular entries cannot be earlier than the 3rd Thursday prior to the week of the Event, and no later than four days prior to the Event) as indicated in the Schedule.

Events for which the Schedule states that overseas air transportation of Horses will be provided/organised by the OC are, for logistical reasons, authorised to establish the closing date for entries at the earliest on the 5th Sunday prior to the event.

For all other Events, please use the template below:

CSIYH1*:

NF's invited:	all
Total number of athletes:	100
Number of horses per athlete:	3 (max 2 per age)

CSIch-B:

NF's invited:	all
Total number of athletes:	40
Number of horses per athlete:	2

CSIJ-A:

NF's invited:	all
Total number of athletes:	40
Number of horses per athlete:	2

Athletes are invited by the Organiser through their National Federation.

One (1) groom per athlete.

1. Athletes may take part in the CSIYH1* without taking part in the CSI2* or CSIch-B or CSIJ-A.
2. Each horse (CSI2*) can start 4 times during the event. On Sunday each horse (CSI2*) can start only in one competition.
3. Horses not competing must be presented during Horse Inspection with passport to general health condition assessment.
4. After Horse Inspection no migrations between different events are allowed.
5. Any substitutions on start lists are allowed maximum 1 hour before competition.
7. Competitions Elite Tour are reserved for riders not taking part in any other Tour of CSI2* except Small Tour.
8. Entries of Home athletes (section 2 in CSI2*) will be accepted in order by the Polish NF Ranking (PZJ no 02/2021). Athletes not ranked in the Polish NF (PZJ) Ranking will be accepted by the order of entries.

ENTRY RIGHT TO SHOWGROUNDS/ACCREDITED PERSONS

Regarding the outbreak of the coronavirus, restrictions are placed on the number of people authorized to enter the competition venue:

1. Competitions will be run behind closed door – without public.
2. One groom per 2 horses for Athlete with more than one Horse
3. One accompanying person for one Athlete
4. One Chef d' Equipe per country

VII. ENTRIES

IMPORTANT

- Entries must be made by NFs through the FEI Entry System for all categories of this Event (<https://invitation.fei.org/login>);
- Additional documentation can be found at: <https://inside.fei.org/fei/your-role/it-services/fei-entry-system/fei-entry-system-jumping>;
- All Athletes and Horses participating in any International Competition must be registered with the FEI;
- Athletes and/or Horses present at the Event without having been entered through the FEI's Online Entry System will be automatically disqualified unless compelling circumstances warrant otherwise.

Attention riders: during show please make your entries to competition next day before 18.00 (every day). All informations will be available in show office.

1. ENTRY DATES AND ENTRY FEES

Entries have to be in accordance with Art.251 of the FEI Jumping Rules, 26th edition, updates effective 1 January 2021

Deadlines for Entries:

Definite Entries: **25 03 2021**

Last date for substitutions: **15 04 2021 1 hour prior to the Horse Inspection**

Entry fee per horse (per category):

VAT excluded

**CSI2* - 400 EUR (VAT excluded)
CSICh-B - 350 EUR (VAT excluded)
CSIJ-A- 350 EUR (VAT excluded)
CSIYH – 300 EUR (VAT excluded)**

VAT (in %) : **0**

Please refer to definition of Entry fees and Compulsory fees in the Glossary of the FEI Jumping Rules 26th edition, updates effective 1 January 2021, that is copied in Section XIV point 10.

Compulsory fees per horse:

- EADCMP Fee: Included in entry fee ☐
Not included in entry fee ☒
Lower Level Events (CIMs) CHF 18 per horse per event
Higher Level Events CHF 25 per horse per event
(For definition of CIMs see Appendix E of the FEI General Regulations, all other events not defined as CIMs)

- Fee for manure disposal (at OC discretion; maximum € 40 per horse per Event). 40 EUR/ Per horse
- Fee for health/customs-related documents for Horses, if applicable (only if requested) 10 EUR Per horse

All aforementioned amounts are including VAT

Total maximum fee per horse: 50 EUR + 18 CHF

Compulsory fees per athlete:

- NF fee if applicable n/a Per athlete
- NF medication control programme fee if applicable n/a Per athlete
- Fee for lorry parking if applicable n/a Per lorry/caravan
- Fee for electric hook-up for lorry 60 EUR Per lorry/caravan

All aforementioned amounts are including VAT

Total maximum fee per Athlete: 60 EUR

INVOICE

From 01.01.2020, in accordance with the regulations, the seller may issue the buyer (VAT payer) an invoice to the receipt only if the buyer's tax identification number is on the receipt.

Therefore, riders who wants to receive an invoice for the company are asked to write a tax identification number in the title of the transfer and send information to the email address: agnieszkatarant@gmail.com

After issuing a receipt without a tax identification number, it will not be possible to issue an invoice to the company.

2. OTHER FEES

All other fees must optional fees and be listed hereunder with the details of the amounts to be charged and approved by the FEI. Only fees approved by the FEI and listed in the approved Schedule can be charged by the OC. *Please specify if price per bale or other quantity.*

Hay:	5 EUR per bail
Straw:	4 EUR per bail (first bedding free)
Shavings:	12 EUR per bail
Other (please specify):	tack box (if available) 150 EUR box for horse not taking 150 EUR

All aforementioned amounts are including VAT

VAT number of the organiser: PL782 255 38 69

3. NO-SHOWS/LATE WITHDRAWALS

NB: In the case of withdrawals after the date of definite entries or no-shows the athlete or the respective NF will be held liable to reimburse the OC for the actual financial loss incurred by the OC (i.e. stabling and hotel expenses) as a result of the late withdrawal or no-show.

Amount charged: Withdrawal before the date of definite entries - 01.04.2021 - free of charge. Withdrawal after the date (01.04.2021) of definite entries and before 11.04.2021 - The Athlete or respective NF has to pay 200 EUR per horse. Withdrawal after 11.04.2021 or no-shows - the Athlete or respective NF has to pay full entry fee as mentioned below: CSI 2* 400 EUR (including VAT) per horse; CSI YH 300 EUR (including VAT) per horse; CSI Ch-B 350 EUR (including VAT) per horse; CSIJ-A 350 EUR per horse.

The athlete has to pay with the entries a prepayment of the amount of minimum 200 EUR (880 PLN) per horse by the date of definite entries (1.04.2021), to the account of:
Klub Sportowy Jumping Events Address: ul. Chotominska 41A 61-311 Poznan, Poland

Bank: Santander

FOR EUR:

Account number: PL 91 1090 1694 0000 0001 3643 4553

SWIFT/BIC code: WBKPPLPP

FOR PLN:

Account number: PL 56 1090 1694 0000 0001 3643 4407

SWIFT/BIC code: WBKPPLPP

At the venue there is a possibility to pay by cash in EUR or in PLN equivalent of the average exchange rate of the National Bank of Poland on 09.04.2021.
The rest of the fees has to be paid on arrival.

VIII. TIMETABLE

Competitions must not start before 08:00 and must not finish after 23:00, unless prior approval is granted by the FEI.

As per Jumping Rules Annex VI: combined competitions are not permitted.

The scheduling of competitions must take into account mandatory maintenance breaks as follows. In principle, there should be one maintenance break for every 40 starters; at a minimum, it is compulsory to include one maintenance break in competitions with 50-99 starters after half of the starters have competed. Competitions with 100 starters or more must have three maintenance breaks. The start list must indicate when the maintenance break will take place (e.g. after N° 25).

(to be provided per category/level if multiple events)	Day	Date	Time
• Opening of stables	Wednesday	14 04 21	16.00
• Horse Inspection <i>All horses taking part at this Event must be present during the first horse inspection, unless unable to do so due to "force majeure"</i>			
• Horse Inspection CSIYH; CSIch-B; CSIJ-A	Thursday	15 04 21	10.00
• Horse Inspection CSI2*	Thursday	15 04 21	11.00
• Horse Re-Inspection CSIYH CSIch-B; CSIJ-A	Thursday	15 04 21	14.00
• Horse Re-Inspection CSI2*	Friday	16 04 21	7.00
• Opening times of exercise areas	Thursday	16 04 21	8.00

Competitions CSI2*	Day	Date	Time	Art.	Prize Money
Comp. No 1 Elite Tour (110)	Friday	16 04 21	8:00	274.2.5	2 000 PLN
Comp. No 2 Medium Tour (130)	Friday	16 04 21	following	238.2.1	10 000 PLN
Comp. No 3 Big Tour (140)	Friday	16 04 21	following	274.1.5.3	10 000 PLN
Comp. No 4 Small Tour (120)	Friday	16 04 21	following	274.2.5	6 000 PLN
Comp. No 5 Small Tour (120)	Saturday	17 04 21	following	274.1.5.3	6 000 PLN
Comp. No 6 Medium Tour (130)	Saturday	17 04 21	following	274.1.5.5	10 000 PLN
Comp. No 7 Big Tour LR (145)	Saturday	17 04 21	following	238.2.1	102 400 PLN
Comp. No 8 Elite Tour (110)	Saturday	17 04 21	following	238.2.1	2 000 PLN
Comp. No 9 Small Tour Final (125 m)	Sunday	18 04 21	8.00	238.2.1	10 000 PLN
Comp. No 10 Elite Tour Final (115 cm)	Sunday	18 04 21	following	238.2.1	4 000 PLN
Comp. No 11 BR Grand Prix LR (145)	Sunday	18 04 21	following	238.2.2	103 000 PLN

FEI APPROVED SCHEDULE

Zielona Gora 15-18 April 2021



Comp. No 12 Medium Tour Final (135 cm)	Sunday	18 04 21	following	238.2.1	20 000 PLN
Total Prize Money					285 400 PLN

Competitions CSIYH	Day	Date	Time	Art.	Prize Money
Comp. No 1YH (5&6) (110/115)	Thursday	15 04 21	following	274.2.5	5 000 PLN
Comp. No 2YH (5&6) (115/120)	Friday	16 04 21	following	238.2.1	5 000 PLN
Comp. No 3YH (5&6) (120/125)	Saturday	17 04 21	following	274.1.5.3	10 000 PLN
Total Prize Money					20 000 PLN

Competitions CSIJ-A	Day	Date	Time	Art.	Prize Money
Comp. No 1J (130) Junior Tour	Thursday	15 04 21	following	238.2.1	3 000 PLN
Comp. No 2J (130) Junior Tour	Friday	16 04 21	following	274.1.5.3	3 000 PLN
Comp. No 3J (135) Junior Tour GP	Sunday	18 04 21	following	238.2.2	6 000 PLN
Total Prize Money					12 000 PLN

Competitions CSICh-B	Day	Date	Time	Art.	Prize Money
Comp. No 1CH (120) Children Tour	Thursday	15 04 21	15.00	238.2.1	in kind
Comp. No 2CH (120) Children Tour	Saturday	17 04 21	following	274.1.5.3	in kind
Comp. No 3CH (125) Children Tour GP	Sunday	18 04 21	following	238.2.2	in kind
Total Prize Money					

Overall Prize Money: 317 400 PLN

Applicable government tax to be deducted from Prize Money (see also XIV.8): 10%

GENERAL CLASSIFICATION AT THE END OF THE COMPETITIONS:

Leading athlete award – The athlete which won the most money in Competitions no 7 and 11 (GP) in total – Cup

IX. COMPETITION DETAIL

FIRST DAY : Thursday

DATE: 15/04/2021

COMPETITION No: 1CH

Time: 14:00

Type of Competition: Children Tour
Competition description: against the clock

Acc. to Article: 238.2.1

Jump-off (if any) no
Speed/Fixed time 350 m/min
Height of obstacles: 120 cm
Number of horses per athlete 2
Number of Starters: 80
Total prize money: in kind

* * * * *

COMPETITION No: 1J

Time: following

Type of Competition: Junior Tour
Competition description: against the clock

Acc. to Article: 238.2.1

Jump-off (if any) no
Speed/Fixed time 350 m/min
Height of obstacles: 130 cm
Number of horses per athlete 1
Number of Starters: 40
Total prize money: 3 000 PLN

Chart to be used: 1 (25% to winner) ☐
2 (33% to winner) ☒

Please specify prize money amount for each athlete placed 13th and beyond: 50 PLN

* * * * *

COMPETITION No: 1YH (5&6Y)

Time: following

Type of Competition: Youngster Tour 5 & 6 years old horses
Competition description: Two phases special, 1st not against the clock, 2nd against the clock

Acc. to Article: 274.2.5

Jump-off (if any) no
Speed/Fixed time 350 m/min
Height of obstacles: 110 cm/115 cm
Number of horses per athlete 3
Number of Starters: 100* (if more than 100 take part then please refer to Section XIV point 9)

Total prize money: 5 000 PLN

Chart to be used: 1 (25% to winner) ☒
2 (33% to winner) ☐

Please specify prize money amount for each athlete placed 13th and beyond: 100 PLN

* * * * *

SECOND DAY : Friday

DATE: 16/04/2021

COMPETITION No: 1

Time: 8.00

Type of Competition: Elite Tour
Acc. to Article: 274.2.5

Competition description: Two phases special, 1st not against the clock, 2nd against the clock

Jump-off (if any) no
Speed/Fixed time 350 m/min
Height of obstacles: 110 cm
Number of horses per athlete 2
Number of Starters: 100* (if more than 100 take part then please refer to Section XIV point 9)
Total prize money: 2 000 PLN
Chart to be used: 1 (25% to winner) ☒
2 (33% to winner) ☐
Please specify prize money amount for each athlete placed 13th and beyond: 40 PLN

* * * * *

COMPETITION No: 2YH (5&6 Y)

Time: following

Type of Competition: Youngster Tour 5 & 6 years old horses Acc. to Article: 238.2.1
Competition description: against the clock

Jump-off (if any) no
Speed/Fixed time 350 m/min
Height of obstacles: 115 cm/120 cm
Number of horses per athlete 3
Number of Starters: 100* (if more than 100 take part then please refer to Section XIV point 9)
Total prize money: 5 000 PLN
Chart to be used: 1 (25% to winner) ☒
2 (33% to winner) ☐
Please specify prize money amount for each athlete placed 13th and beyond: 100 PLN

* * * * *

COMPETITION No: 2

Time: following

Type of Competition: Medium Tour Acc. to Article: 238.2.1
Competition description: against the clock

2nd Qualification to Competition no 7 (Saturday Big Tour LR)

Jump-off (if any) no
Speed/Fixed time 350 m/min
Height of obstacles: 130 cm
Number of horses per athlete 2
Number of Starters: 100* (if more than 100 take part then please refer to Section XIV point 9)
Total prize money: 10 000 PLN
Chart to be used: 1 (25% to winner) ☒
2 (33% to winner) ☐
Please specify prize money amount for each athlete placed 13th and beyond: 100 PLN

* * * * *

COMPETITION No: 3

Time: following

Type of Competition: Big Tour Acc. to Article: 274.1.5.3
Competition description: Two phases, 1st against the clock, 2nd against the clock

1st Qualification to Grand Prix

1st Qualification to Competition no 7 (Saturday Big Tour LR)

Jump-off (if any) no
Speed/Fixed time 350 m/min
Height of obstacles: 140 cm
Number of horses per athlete 2
Number of Starters: 100* (if more than 100 take part then please refer to Section XIV point 9)
Total prize money: 10 000 PLN
Chart to be used: 1 (25% to winner) ☒
2 (33% to winner) ☐
Please specify prize money amount for each athlete placed 13th and beyond: 100 PLN

* * * * *

COMPETITION No: 2J

Time: following

Type of Competition: Junior Tour Acc. to Article: 274.1.5.3
Competition description: Two phases, 1st against the clock, 2nd against the clock

Jump-off (if any) no
Speed/Fixed time 350 m/min
Height of obstacles: 130 cm
Number of horses per athlete 1
Number of Starters: 40
Total prize money: 3 000 PLN
Chart to be used: 1 (25% to winner) ☐
2 (33% to winner) ☒
Please specify prize money amount for each athlete placed 13th and beyond: 50 PLN

* * * * *

COMPETITION No: 4

Time: following

Type of Competition: Small Tour Acc. to Article: 274.2.5
Competition description: Two phases special, 1st not against the clock, 2nd against the clock

Jump-off (if any) no
Speed/Fixed time 350 m/min
Height of obstacles: 120 cm
Number of horses per athlete 2
Number of Starters: 100* (if more than 100 take part then please refer to Section XIV point 9)
Total prize money: 6 000 PLN
Chart to be used: 1 (25% to winner) ☒
2 (33% to winner) ☐
Please specify prize money amount for each athlete placed 13th and beyond: 100 PLN

* * * * *

THIRD DAY : Saturday

DATE: 17/04/2021

COMPETITION No: 2CH

Time: 8.00

Type of Competition: Children Tour Acc. to Article: 274.1.5.3
Competition description: Two phases 1st against the clock, 2nd against the clock

Jump-off (if any) no

Speed/Fixed time 350 m/min
Height of obstacles: 120 cm
Number of horses per athlete 2
Number of Starters: 80
Total prize money: In kind

* * * * *

COMPETITION No: 5

Time: following

Type of Competition: Small Tour Acc. to Article: 274.1.5.3
Competition description: Two phases, 1st against the clock, 2nd against the clock

Jump-off (if any) no
Speed/Fixed time 350 m/min
Height of obstacles: 120 cm
Number of horses per athlete 2
Number of Starters: 100* (if more than 100 take part then please refer to Section XIV point 9)
Total prize money: 6 000 PLN
Chart to be used: 1 (25% to winner) ☒
2 (33% to winner) ☐
Please specify prize money amount for each athlete placed 13th and beyond: 100 PLN

* * * * *

COMPETITION No: 3YH (5&6Y)

Time: following

Type of Competition: Youngster Tour Final Acc. to Article: 274.1.5.3
Competition description: Two phases, 1st against the clock, 2nd against the clock

Jump-off (if any) no
Speed/Fixed time 350 m/min
Height of obstacles: 120 cm/125 cm
Number of horses per athlete 3
Number of Starters: 100* (if more than 100 take part then please refer to Section XIV point 9)
Total prize money: 10 000 PLN
Chart to be used: 1 (25% to winner) ☒
2 (33% to winner) ☐
Please specify prize money amount for each athlete placed 13th and beyond: 100 PLN

* * * * *

COMPETITION No: 6

Time: following

Type of Competition: Medium Tour Acc. to Article: 274.1.5.5
Competition description: Two phases, 1st phase against the clock, 2nd phase Table C

Jump-off (if any) no
Speed/Fixed time 350 m/min
Height of obstacles: 130cm
Number of horses per athlete 2
Number of Starters: 100* (if more than 100 take part then please refer to Section XIV point 9)
Total prize money: 10 000 PLN
Chart to be used: 1 (25% to winner) ☒
2 (33% to winner) ☐
Please specify prize money amount for each athlete placed 13th and beyond: 100 PLN

* * * * *

COMPETITION No: 7

Time: following

Type of Competition: Big Tour
Competition description: against the clock

Acc. to Article: 238.2.1

2nd Qualification to Grand Prix.

Counts for the Longines Rankings (D)

The best 50 Athletes from competition no 3 (Big Tour) will be qualified for this competition. If Athlete doesn't confirm their participation the next Athlete from competition no. 2 will be qualified, provided her/his entries will not exceed quota 100. If there are less entries than 100 the next Athlete from competition no. 3 will be qualified to fulfil the number of 100 horses. If there are still less entries than 100, the best riders from competition no 2 (Medium Tour) may enter horses provided they don't exceed the quota.

Jump-off (if any)	no
Speed/Fixed time	350 m/min
Height of obstacles:	145 cm
Number of horses per athlete	1
Number of Starters:	100
Total prize money:	102 400 PLN
Chart to be used:	1 (25% to winner) <input checked="" type="checkbox"/>
	2 (33% to winner) <input type="checkbox"/>

Please specify prize money amount for each athlete placed 13th and beyond: 100 PLN

* * * * *

COMPETITION No: 8

Time: following

Type of Competition: Elite Tour
Competition description: against the clock

Acc. to Article: 238.2.1

Jump-off (if any)	no
Speed/Fixed time	350 m/min
Height of obstacles:	110 cm
Number of horses per athlete	2
Number of Starters:	100* (if more than 100 take part then please refer to Section XIV point 9)
Total prize money:	2 000 PLN
Chart to be used:	1 (25% to winner) <input checked="" type="checkbox"/>
	2 (33% to winner) <input type="checkbox"/>

Please specify prize money amount for each athlete placed 13th and beyond: 40 PLN

* * * * *

FOURTH DAY : Sunday

DATE: 18/04/2021

COMPETITION No: 9

Time: 8.00

Type of Competition: Small Tour Final
Competition description: against the clock

Acc. to Article: 238.2.1

Jump-off (if any)	no
Speed/Fixed time	350 m/min

Height of obstacles: 125 cm
Number of horses per athlete: 2
Number of Starters: 100* (if more than 100 take part then please refer to Section XIV point 9)
Total prize money: 10 000 PLN
Chart to be used: 1 (25% to winner) ☒
2 (33% to winner) ☐
Please specify prize money amount for each athlete placed 13th and beyond: 100 PLN

* * * * *

COMPETITION No: 10

Time: following

Type of Competition: Elite Tour Final
Competition description: against the clock

Acc. to Article: 238.2.1

Jump-off (if any): no
Speed/Fixed time: 350 m/min
Height of obstacles: 115 cm
Number of horses per athlete: 2
Number of Starters: 100* (if more than 100 take part then please refer to Section XIV point 9)
Total prize money: 4 000 PLN
Chart to be used: 1 (25% to winner) ☒
2 (33% to winner) ☐
Please specify prize money amount for each athlete placed 13th and beyond: 80 PLN

* * * * *

COMPETITION No: 3CH

Time: following

Type of Competition: Children Tour Final
Competition description: against the clock with jump off

Acc. to Article: 238.2.2

Jump-off (if any): no
Speed/Fixed time: 350 m/min
Height of obstacles: 125 cm
Number of horses per athlete: 2
Number of Starters: 80
Total prize money: in kind

* * * * *

COMPETITION No: 3J

Time: following

Type of Competition: Junior Tour Grand Prix
Competition description: against the clock with jump off

Acc. to Article: 238.2.2

Jump-off (if any): no
Speed/Fixed time: 350 m/min
Height of obstacles: 135 cm
Number of horses per athlete: 1
Number of Starters: 40
Total prize money: 6 000 PLN
Chart to be used: 1 (25% to winner) ☐
2 (33% to winner) ☒

Please specify prize money amount for each athlete placed 13th and beyond: 100 PLN

All Athletes taking part in a Grand Prix at a CSIO or a CSI must have completed, with their Grand Prix Horse, the initial round of at least one competition among those listed in JRs Art. 261.4.4 prior to the Grand Prix. For competitions run under art 274.2.5 both phases must be completed in order to be eligible for the Grand Prix.

* * * * *

COMPETITION No: 11

Time: following

Type of Competition: BR Grand Prix

Acc. to Article: 238.2.2

Competition description: against the clock with jump off

Counts for the Longines Rankings (D)

Jump-off (if any)	1
Speed/Fixed time	375 m/min
Height of obstacles:	145 cm
Number of horses per athlete	1 or 2 (art. 256.6)*
Number of Starters:	100
Total prize money:	103 000 PLN
Chart to be used:	1 (25% to winner) <input checked="" type="checkbox"/>
	2 (33% to winner) <input type="checkbox"/>

Please specify prize money amount for each athlete placed 13th and beyond: 100 PLN

* If in the Grand Prix there are 50 Athletes or less entered, the Athlete is allowed to ride two Horses in the Competition concerned. Art. 261.4.4

All athletes qualified for the Grand Prix, including those automatically qualified must complete, with their Grand Prix horse, the initial round of at least one FEI competition among those listed in JRs Art. 261.4.4 prior to the Grand Prix.

Qualification system: The best 50 placed Athletes from Comp. No. 3 (including automatically qualified Athletes if they are classified among the top 50) are qualified to participate.

The best placed Athletes from Comp. No. 7, including automatically prequalified Athletes, to reach the number of 100 participating Athletes.

If any qualified Athlete decides not to compete in Grand Prix (not later than 1 hour before start the Competition), next is coming to fulfil the list, first from Comp. No. 3, next from Comp. No. 7. The following Athletes (not Athlete/Horse combinations) are automatically qualified for the Grand Prix at CSI Events, if present:

4.2.1. The winner of that Event's Grand Prix the previous year;

4.2.2. The current National Jumping Champion of the host country;

4.2.3. The individual Jumping medal winners of the last Olympic and Pan-American Games, the last World and Continental Championships and the winner of the last FEI World Cup™ Jumping Final.

* * * * *

COMPETITION No: 12

Time: following

Type of Competition: Medium Tour Final

Acc. to Article: 238.2.1

Competition description: against the clock

Jump-off (if any)	no
Speed/Fixed time	350 m/min
Height of obstacles:	135 cm
Number of horses per athlete	2
Number of Starters:	100* (if more than 100 take part then please refer to Section XIV point 9)
Total prize money:	20 000 PLN

FEI APPROVED SCHEDULE
Zielona Gora 15-18 April 2021



Chart to be used: 1 (25% to winner) ☒

2 (33% to winner) ☐

Please specify prize money amount for each athlete placed 13th and beyond: 100 PLN

* * * * *

X. FACILITIES OFFERED

1. ATHLETES

Accommodation

Hotel: Olimpijczyk / Sportowiec / Bungalowy

Address: Zielona Góra Drzonków ul. Olimpijska 20

Telephone: tel. 68 321 43 12/10, kom: 603 034 546, e-mail: cok@drzonkow.pl

At the expense of: The Organiser ☐ or Athletes ☒

Accommodated (bed and breakfast) from to

Meals

At the expense of: The Organiser ☐ or Athletes ☒

Meals provided from to .

2. GROOMS

Accommodation.

Requests for accommodation must be sent with entries.

At the expense of: The Organiser ☐ or Athletes ☒

Accommodated (bed and breakfast) from to

Meals.

At the expense of: The Organiser ☐ or Athletes ☒

Meals provided from to .

NB: If applicable, Organiser must provide proper sanitary conditions. The showering facilities should be sufficient for both male and female grooms with hot and cold water. Shower facilities as well as restrooms should at all times be in a state of cleanliness.

XI. LOGISTICAL/ADMINISTRATIVE/TECHNICAL INFORMATION

1. DRAW

List of Draws, time, date and location: All draws will be conducted by the computer system,

2. COMPETITION ARENA(S)

Dimensions: 95 m x 50 m
Type of Footing: sand Ebbe & Flut

3. PRACTICE ARENA(S)

Dimensions: 75 m x 33 m
Type of Footing: sand Ebbe & Flut

Riders must have the possibility to exercise their horses in an exercise area under a Steward's supervision at least 30 minutes per day outside of the competition warm-up period. Details of opening times of exercise areas must be included in the timetable.

4. STABLES

Size of boxes 3 m x 3 m (minimum 3m x 3m+20% 3m x 4m)

5. SAFETY CUPS

Name of Manufacturer: Caro

6. TIMING DEVICE

Name of Manufacturer: Tag Heuer
Model: CP 545, HL3 - RX
FEI Report number: 22010028A, 2016004B

7. SCORING/TIMING PROVIDER

Will you use a FEI Certified Service Provider to manage the scoring and timing at your Event?

(The list of certified Service Providers is available here: <https://inside.fei.org/fei/your-role/it-services/it-providers/list>)

No ☒

Name of the company: Tarant Events

Contact person at Event

Name: Agnieszka Tarant

FEI ID number: 10139344

Contact email: agnieszkatarant@gmail.com

Please fill in Annex XV – FEI Entry System for the Timing Provider

The FEI may require to be provided with real time results data feed of your Events according to FEI requirements; in this case you and your provider will be informed accordingly.

8. OTHER TECHNOLOGY/SERVICE PROVIDER(S)

Will you use other technology/service provider(s) at your event?

No ☒

9. PRIZE GIVING CEREMONY

The owner of the winning horse/pony must be invited to the prize giving ceremony for the Grand Prix, if present at the event.

The number of athletes required to present themselves for the prize-giving ceremony of each competition is 8.

All Prize Giving Ceremonies must strictly follow the [Covid-19 guidelines for Prize giving protocols and media activities.](#)

10. ADVERTISING ON ATHLETES AND HORSES

At CSI events, and all competitions except for the Nations Cup, athletes are authorised to carry the logo of their personal sponsor in accordance with the articles 256.3 and 257.3 of the FEI Jumping Rules.

The Chief Steward will check that the advertising on athletes and horses complies with these Articles.

11. TICKETING

Are you selling tickets for spectators to attend your event: Yes ☐ No ☒

Name of your ticketing provider:

Web address to buy ticket:

12. BETTING

Betting will be authorised by the Organiser: Yes ☐ No ☒

13. TRANSPORT REIMBURSEMENT HORSES / PONIES

Transport expenses to be paid by:

The Organiser ☐ at _____ per km.

The Athlete ☒

14. WELCOME

The time and date of arrival of athletes, horses and their means of transport must be given to the Organiser in order to facilitate their arrival.

15. LOCAL TRANSPORTATION - ARRANGEMENTS FROM HOTEL TO SHOWGROUNDS

Walking distance ☒

Organiser Shuttle Service ☐

Public Transport ☐ to be paid by the Organiser ☐ / the Athlete ☐

If paid by Athlete approximate cost per round trip:

Other:

16. ENTRY RIGHT TO SHOWGROUNDS/ACCREDITED PERSONS

Entry right to the stable area according to FEI Veterinary Regulations Articles 1008-1009.

NUMBER OF ACCREDITED PERSONS:

Athlete: 1

Partner: 1

Groom: 1

Horse Owner: Following the current COVID 19 Government Rules

No public: It is not possible to provide two (2) accreditations per horse acc. to FEI-Passport

17.SUSTAINABILITY

Please consider the environment when organising an FEI Event. Please find useful information on FEI Sustainability here: <http://inside.fei.org/fei/your-role/organisers/handbook>

XII. VETERINARY MATTERS

1. CUSTOMS FORMALITIES

Contact details for Customs Formalities:

Name: C.Hartwing S.A. (international shipping company),
Address: Równoległa 4, 02-235 Warszawa
Telephone: +48 22 868 34 71
Fax: +48 22 846 69 96
Email: k.jarosz@chg.pl
Opening hours: 8 - 16

2. HEALTH REQUIREMENTS

GENERAL

In accordance with the FEI Code of Conduct for the Welfare of the Horse it is imperative that all Horses at FEI Events are physically fit and free from infectious disease before being allowed to compete.

ENTRY OF HORSES

Required health tests and vaccinations:

Quarantine period:

Specimen Import Licence applied:

For questions or problems, please contact your Government Veterinary Services.

Horses taking part in CSI2*, CSICH-A, CSIJ-A and CSIYH1* in their country of residence are not required to have FEI passport. (FEI Grs art. 137.2).
Non - competing horses must be presented at the Horse Inspection for identification and vaccination control.
Under the law, all horses must have a health certificate – TRACES document. This certificate is issued by an official veterinarian. The Rider is required to have a compulsory certificate per horse. Documents will be verified by the Government Veterinary Inspection before and during the event. If horse will not have a TRACES document -it will not be allowed into the competition area.

3. NATIONAL REQUIREMENTS

If applicable please provide:

Please refer to the website <http://www.viatoll.pl> for information referring to payment of a toll in Poland (a fee for driving your truck in Poland). The website is multi-lingual.

4. PONIES

FEI Veterinary Regulations, Chapter IX and Annex IX:

For all Pony Events, Ponies must be available for Pony Measurement if requested by the FEI.

5. INJURY SURVEILLANCE

FEI Veterinary Regulations, Chapter VIII:

Horses participating in FEI Events are subject to injury surveillance protocols; and in the event of fatality, a post mortem examination.

6. TRANSPORT OF HORSES

Horses must be fit to travel and be transported in suitable vehicles for the transport of horses. Any government requirements for disease testing and control must be requested well in advance, to ensure that the horse is in compliance by the time of arrival at the border of the country where the Event is taking place. Athletes, or their representatives, have the responsibility to comply with national legislation in both their country of origin and the host nation of the Event. Where necessary athletes must contact local government authorities or veterinary advisors for information regarding animal health requirements and transport legislation. Within the European Union (EU), this includes EU Council Regulation (EC) No 1/2005 concerning the protection of animals during transport within the Member States of the EU.

7. VENUE ARRIVAL INFORMATION & FITNESS TO COMPETE

7.1. PASSPORTS. FEI General Regulations Article 137

For all issues relating to FEI Horse Passports/FEI Recognition Cards please contact your National Federation.

All Horses competing at FEI Events must be registered with the FEI.

FEI Passports or FEI Recognition Cards (for those Horses with a national passport approved by the FEI) are compulsory for FEI Events.

NB: Horses entered in CIMs and in CSIP in their country of residence are not required to have an FEI Passport or FEI Recognition Card but must be properly registered with the FEI and identifiable (GRs 137.2).

Athletes who do not present a Horse's Passport and/or Recognition Card, or one that is not correctly validated or fail to meet other passport requirements will be **subject to Sanctions in accordance with Annex VI of the FEI Veterinary Regulations** and may not be allowed to compete.

NB for Horses permanently resident in a Member State of the European Union: all Horses must have a national EU passport in compliance with EU Regulations to which a FEI Recognition card is applied. The exception to this being Horses in possession of an FEI passport which has been continually revalidated without interruption.

7.2. VACCINATIONS - EQUINE INFLUENZA. FEI Veterinary Regulations Article 1003

Horses competing at FEI Events must comply with the requirements for Equine Influenza vaccination in accordance with the Veterinary Regulations and as summarised below.

VACCINATION	PROTOCOL	ELIGIBILITY TO ENTER VENUE
Primary Course	1 st Vaccination: day 0 2 nd Vaccination: day 21-92	May compete 7 days after the 2 nd Vaccination
First Booster	Within 7 months of the 2 nd vaccination of the Primary Course	May compete for 6 months + 21 days after the 2 nd vaccination of the Primary Course Must not compete in the 7 days

		after receiving a vaccination
Boosters	MINIMUM: within one year of previous booster vaccination IF COMPETING: must be in the 6 months +21 days of the booster previous vaccination	Must have been vaccinated within 6 months +21 days before arriving at the Event Must not compete in the 7 days after receiving a vaccination

All FEI registered Horses intending to compete at FEI Events (including CIMs) must be vaccinated against Equine Influenza in accordance with these VRs. The exception being if the applicable domestic legislation prevents the use of Equine Influenza vaccines within the relevant territory

7.3. EXAMINATION ON ARRIVAL. FEI Veterinary Regulations Article 1031

On arrival at an Event venue, all Horses must undergo an examination by a veterinarian to confirm their identification from their passport and micro-chip ID (where present), their vaccination status and general health. To protect all horses attending events, any Horse with a questionable health status concerning vaccination, disease or other concerns, must be stabled within the isolation facilities provided by the Organising Committee pending a decision on entering the venue.

7.4. HORSE INSPECTIONS. FEI Veterinary Regulations Articles 1034-1042

All Horses will be assessed for their fitness to compete during the Horse Inspection. Any Horse demonstrating questionable fitness may be referred to the Holding Box for further veterinary examination. Horses not deemed fit to compete by the Inspection Panel will not be permitted to compete.

7.5. LIMB SENSITIVITY EXAMINATION. FEI Veterinary Regulations Articles 1048-1053

All Horses are subject to examination under the protocol for abnormal limb sensitivity throughout the period of an Event. For Jumping that includes, but is not limited to, between rounds and before the Jump Off. Horses may be examined once or on multiple occasions during the Period of an Event.

Horses may be selected for examination under the protocol randomly or they may be targeted. All Horses selected to be tested must submit promptly to the examination or are subject to immediate disqualification. There is no obligation to examine any specific number of Horses at an Event.

8. EQUINE ANTI-DOPING AND CONTROLLED MEDICATION PROGRAMME (EADCMP). FEI VETERINARY REGULATIONS, CHAPTER VII

8.1. SAMPLING. FEI VETERINARY REGULATIONS Chapter VII

All horses competing at FEI Events may be subject to sampling for the presence of Prohibited Substances in accordance with the Anti-Doping and Controlled Medication Regulations (EADCMRs). Horses may be selected for sampling in accordance with obligatory testing, targeted or random sampling procedures. Refer to FEI Financial Charges for details of fees relating to Equine and Human Anti-Doping program (EADCMP), which OCs/NFs have the right to charge to the athlete (applicable for all FEI events worldwide).

8.2. ELECTIVE TESTING. FEI VETERINARY REGULATIONS ARTICLES 1058

Elective Testing may be carried out prior to an Event to check for the presence of Prohibited Substances. Please refer to <https://inside.fei.org/fei/cleansport/horses> for information and

details.

XIII. HUMAN ANTI-DOPING

Athletes can be tested at any FEI Event, by the FEI or by other Anti-Doping Organisations with Testing jurisdiction. Organisers will have the responsibility to provide facilities and staff/volunteers to facilitate such Testing if requested by the FEI as outlined in article 22.3 of the FEI's Anti-doping Rules for Human Athletes (ADRHA).

The ADRHA rules are published on the FEI website at <http://inside.fei.org/content/anti-doping-rules>.

XIV. ADDITIONAL INFORMATION

1. THE FEI POLICY FOR ENHANCED COMPETITION SAFETY DURING THE COVID-19 PANDEMIC

The FEI Policy for Enhanced Competition Safety during the Covid-19 Pandemic ("Policy") (<https://inside.fei.org/system/files/FEI%20Policy%20for%20Enhanced%20Competition%20Safety%20during%20the%20Covid-19%20Pandemic%20-%20Effective%201%20July%202020%20-%20Updated%2012%20October%202020.pdf>) is mandatory and applies for any FEI Event taking place **as of 1 July 2020**. The Policy has been developed based on currently accepted best practices by the WHO and US Center for Disease Control (CDC) and will be continually reviewed and updated as more information becomes available. It is not intended to replace the applicable guidance and policies from domestic government and health authorities, but to supplement their recommendations with sport specific considerations.

The OC shall submit the risk assessment and mitigation plan (including name and contact details of the person in charge) to the FEI as an annex to the Event Schedule, **at the latest ten (10) working days before the event's deadline for Definite Entries**.

Events for which the FEI has not received the documented risk assessment and mitigation measures plan in accordance with article 2.1.g) of the Policy **will be removed from the FEI calendar** in accordance with Article 112.3 of the FEI General Regulations.

ASSUMPTION OF RISK / WAIVER OF LIABILITY

In consideration of being allowed to participate in the Event and related activities, all Participants (as defined in the Policy) acknowledge, appreciate, and agree that:

1. Participation includes possible exposure to and illness from infectious diseases including but not limited to COVID-19. While particular rules and personal discipline may reduce this risk, the risk of serious illness and death does exist; and,
2. The Participants knowingly and freely assume all such risks, both known and unknown, even if arising from the negligence of the OC or others, and assume full responsibility for their participation; and,
3. The Participants willingly agree to comply with the stated and customary terms and conditions for participation as regards protection against infectious diseases. If, however, a Participant observes any unusual or significant hazard during his/her presence or participation, the Participant will remove himself/herself from participation and bring such to the attention of the nearest official immediately; and,

4. The Participants, for themselves and on behalf of their heirs, assigns, personal representatives and next of kin, HEREBY RELEASE AND HOLD HARMLESS THE OC AND THE FEI, their officers, officials, agents, and/or employees, other participants, sponsoring agencies, sponsors, advertisers, and if applicable, owners and lessors of premises used to conduct the event ("RELEASEES"), WITH RESPECT TO ANY AND ALL ILLNESS, DISABILITY, DEATH, or loss or damage to person or property, WHETHER ARISING FROM THE NEGLIGENCE OF RELEASEES OR OTHERWISE, to the fullest extent permitted by law.

The Participants confirm to have read this release of liability and assumption of risk agreement, fully understand its terms, understand that they have given up substantial rights.

2. INSURANCES AND NATIONAL REQUIREMENTS

Equestrian sports involve inherent dangerous risks. To the greatest extent permitted by law, the FEI and the FEI Event Organiser shall NOT be liable for any damages relating to loss of property or injury of any kind to Athletes, Owners, Support Personnel or Horses at or in connection with an FEI Event and the FEI expressly excludes all such liability.

2.1. ATHLETES, OWNERS AND SUPPORT PERSONNEL

2.1.1. Personal Accident and Health Insurance

It is your responsibility as an Athlete/Owner/ Support Personnel to ensure that you have adequate personal accident insurance in place to cover your participation at FEI Events and in particular to insure against any personal injury or medical expenses arising from an accident, injury or illness which may occur at a FEI Event.

You should check with your National Federation to confirm if your National Federation's insurance policy (if any) covers personal accidents and/or illnesses which may occur when you are attending/participating in FEI Events.

If your National Federation does not have a personal accident/health insurance policy or if the National Federation's insurance policy does not cover personal accident or health claims, then you should obtain your own personal accident and health insurance policy to cover your attendance/participation at FEI Events.

2.1.2. Personal Property Insurance

You should also ensure that you are insured against property loss, theft or damage which may occur at an FEI Event.

Again, the advice is to check with your National Federation to confirm if they have an insurance policy in place which would cover you in case of such property loss, theft or damage. If not, then you should obtain your own personal property insurance to cover such situations.

2.1.3. Press Equipment

Press equipment and other items left in the Press workroom, Press lockers, the Press Tribune or anywhere on the showgrounds are left entirely at the owner's risk. The Organising Committee does not accept any responsibility for any loss or damage to such equipment or items. Members of the Press are advised not to leave any equipment or personal items unattended.

2.2. ATHLETES AND OWNERS

2.2.1. Third Party Liability Insurance

As an Athlete/Owner you are personally responsible for damages to third parties caused by you, your employees, Support Personnel, your agents or your Horses. You are, therefore, strongly advised to take out third-party liability insurance providing full coverage in relation to FEI Events at home and abroad, and to keep the policy up to date.

The FEI and the Organiser will NOT be responsible for any damage caused to third parties by you, your employees, Support Personnel, your agents or your Horses.

2.2.2. Additional Liability Information

Space for organiser to include reference to National Laws when necessary

2.2.3. Horse Insurance

As an Owner you should ensure that your Horses are adequately insured against any injuries or illnesses they may sustain while participating at a FEI Event.

Space for organiser to include reference to National Laws when necessary

3. PROTESTS/APPEALS

To be valid, all Protests and Appeals must be made in writing and accompanied by a deposit of CHF 150.- or equivalent.

Protest and appeal forms are available on the FEI website:

Protests: <http://inside.fei.org/sites/default/files/FEI%20Protest%20Form.pdf>

Appeals: <http://inside.fei.org/sites/default/files/FEI%20Appeal%20Form.pdf>

4. SCHOOLING DURING COMPETITIONS

Athletes wishing to school during speed competitions (Table A and Table C) must inform the OC before these competitions begin. These athletes will start first in these competitions.

5. STEWARDING

- If an athlete is uncertain as to whether the boots he/she intends to use during an event are allowed, he/she or his/her representative should show the boots to the Chief Steward for his/her opinion before the boots are used in training or in competition.
- In addition, athletes are to be made aware that hind boots must be removed and placed again on the horse's legs in the presence of a Steward while in the warm-up arena prior to entering the competition arena for certain competitions. (If bandages are used in place of boots, athletes are not required to remove the bandages in the warm-up arena.) This procedure is compulsory for competitions for which boot and bandage control is mandatory, that is the Nations Cup, Grand Prix, and the competition with the highest prize money, and is at the discretion of the Chief Steward for other competitions.

- As an alternative to carrying out this procedure at the time designated by the Steward an athlete may ask his/her groom to take the boots to the in-gate and place them on the horse's legs in front of the Steward prior to the combination entering the arena.
- The Steward has the authority to intervene if a boot is deemed excessively tight by instructing that the boot be removed and put on again correctly. *[Stewards are to note that it is normal for a horse's gait to be somewhat affected immediately after boots have been removed and re-placed.]* If an athlete or his/her groom refuses to remove and re-place the boot(s) when instructed to do so by the Steward, a Yellow Warning Card will be issued to the athlete in question.
- If it is deemed impossible or unsafe to remove the hind boots in the warm-up arena prior to the combination entering the competition arena, due to an extremely excited or nervous horse, the boots of the horse in question are to be removed by the athlete/groom following the athlete's round upon leaving the arena and inspected by the Steward. This inspection may be carried out during the boot and bandage control if the boot and bandage control is carried out for the competition in question.
- This procedure does not replace boot and bandage control after completion of an athlete's round for competitions for which boot and bandage control is mandatory (refer to JRs Art. 244.1).

6. DISPUTES

In the event of any discussion concerning the interpretation of the schedule (in translated languages), the English version will be decisive.

7. MODIFICATION TO SCHEDULE

In exceptional circumstances, together with the approval of Chefs d'Equipe, host NF delegate, if any, and the Ground Jury, the Organiser may change the schedule in order to clarify any matter arising from an omission or due to unforeseen circumstances. Any such changes must be notified to all athletes and officials as soon as possible and they must be reported to the FEI Secretary General by the Technical Delegate, the President of the Ground Jury or the Foreign Judge, as applicable.

8. ADDITIONAL INFORMATION FROM THE OC

Space for organiser to include any additional information

Age of Athletes and Horses according to the Event's Category

Event's Category	Age of Athletes (Refer to JRs 255)	Age of Horses
Olympic Games/WEG	As of 18 th year	Min 9 y.o.
Continental Championships Senior	As of 18 th year	Min 8 y.o.
Regional Championships/Games	As of 18 th year As of 16 th year if height of obstacles max.1.40m (JRs Annex IX, Art. 6.1)	Min. 8 y.o. Min. 7 y.o. if height of obstacles max. 1.40m (JRs Art. 254.1.1)
World Cup Final	As of 18 th year	Min. 9 y.o.
Nations Cup Final	As of 18 th year	Min. 8 y.o.
CSI-W3*-5*/CSIO3*-5*/CSI3*-5* Grand Prix, World Cup, Nations Cup, Power and Skill, Derby or Competition with the highest prize money Other Competitions Other Competitions if height max. 1.40m Other Competitions if height max. 1.30m	As of 18 th year As of 16 th year As of 14 th year As of 12 th year	Min. 7 y.o.
CSIO1*-2*/CSIO-W1*-2* Grand Prix, World Cup, Nations Cup, Power and Skill, Derby or Competition with the highest prize money Other Competitions Other Competitions if height max. 1.40m Other Competitions if height max. 1.30m	As of 18 th year As of 16 th year As of 14 th year As of 12 th year	Min. 6 y.o. *
CSI-W2*/CSI2* World Cup, Power and Skill, Derby Grand Prix, if not the World Cup Competition, and other Competitions Grand Prix, if not the World Cup Competition, and other Competitions if height max. 1.40m Grand Prix, if not the World Cup Competition, and other Competitions if height max. 1.30m	As of 18 th year As of 16 th year As of 14 th year As of 12 th year	Min. 6 y.o.
CSI-W1*/CSI1* World Cup, Power and Skill, Derby Grand Prix, if not the World Cup Competition, and other Competitions Grand Prix, if not the World Cup Competition, and other Competitions if height max. 1.30m	As of 18 th year As of 14 th year As of 12 th year	Min. 6 y.o.
CH-Y	As of 16 th year to end 21 st year	Min. 7 y.o.
CSI/CSIO-Y	As of 16 th year to end 21 st year	Min. 7 y.o.
CH-J	As of 14 th year to end 18 th year	Min. 7 y.o.
CSI/CSIO-J	As of 14 th year to end 18 th year	Min. 6 y.o.
CSI/CSIO-Ch/CH-Ch	As of 12 th year to end 14 th year	Min. 6 y.o.
CSI/CSIO-P/CH-P	As of 12 th year to end 16 th year Ponies must be registered as ponies with FEI	Min. 6 y.o.
CSIU-25	As of 16 th year to end 25 th year for all CSIU-25 comp. As of 14 th year if height max. 1.40m (to end 25 th year)	Min. 7 y.o.
CSIV	As of 45 th year	Min. 6 y.o.
CSIAm	As of 12 th year until end of 13 th year if competition height is max. 1.30 m; as of 14 th year if height exceeds 1.30 m.	Min. 6 y.o.
CSIYH	Per Art. 255.2	Min. 5 y.o. – Max. 8 y.o.
CH-M-YH-S	As of 18 th year or 16 year for athletes qualified with the same horse	5 y.o. / 6 y.o. / 7 y.o.

Art. 254.1.1: Horses entered for CSIO2 Events at which the Nations Cup is built to the dimensions set forth in JRs Art. 264.3 for 2* Events must be at least 6 years old; Horses entered for CSIO2* Events at which the Nations Cup is built to the dimensions set forth in JRs Art. 264.3 for 3* Events or higher must be at least 7 years old.

DEDUCTIONS FROM PRIZE MONEY AT COMPETITIONS:

Full details of any deductions from prize money must be outlined in the schedule. This includes government taxes. If it is necessary for Organisers to deduct such taxes, they must provide participants with an official form indicating the amount of tax deducted.

The tax form must be provided to the athletes upon arrival and returned to the Organiser prior to departing.

IMPORTANT

The total amount of prize money shown for each Competition in the schedule must be distributed. (FEI General Regulations articles 127 and 128)

For details of the prize money breakdown for each competition please refer to the tables at the end of this document; the Organiser must specify which of the two (2) tables will be used. The total prize money for the Competition must be distributed among the first twelve (12) placed athletes.

The Organiser must provide additional created prizes for athletes placed beyond twelfth (12th) place. The minimum amount for each of these additional prizes, for athletes placed from thirteenth (13th) to last place, must be clearly specified in the approved schedule and not exceed the prize money of the athlete placed twelfth (12th)

10. MAXIMUM NUMBER OF STARTERS PER COMPETITION

***Annex VI FEI Jumping Rules:**

Maximum 100 starters per Competition other than the GP. If more than 100 starters are declared, the OC must provide the following percentages of additional prize money for every ten declared starters, up to 120 declared starters:

- 101 to 110 declared starters: the OC must provide 133% of the original Competition prize money, which is to be distributed among the 16 best placed athletes in the Competition according to the prize money distribution chart I or II. The additional prize money provided by the OC is not taken into consideration with regard to the overall prize money that determines the star level of the Event or the Longines Ranking point group of the Competition, if applicable.
- 111 to 120 declared starters: the OC must provide 166% of the original Competition prize money, which is to be distributed among the 20 best placed athletes in the Competition according to the prize money distribution chart I or II. The additional prize money provided by the OC is not taken into consideration with regard to the overall prize money that determines the star level of the Event or the Longines Ranking point group of the Competition, if applicable.

If more than 120 starters are declared, the OC must split the Competition into two groups and provide 200% of the original Competition prize money which is to be divided equally between the two groups. The additional prize money provided by the OC is not taken into consideration with regard to the overall prize money that determines the star level of the Event or the Longines Ranking point group of the Competition, if applicable.

OCs may apply either of the following methods for splitting the Competition:

The competition is split into two groups before it starts. There may be athletes with multiple horses in each group but all horses of any one athlete must be in the same group. If it is not possible to have two groups of equal size there may be a different number of starters in each group;

OR

The competition is run as one single competition and split afterward into two groups and the

classification established as follows: the athlete with the best score is the winner of the first group, the athlete with the second best score is the winner of the second group and so on until prizes have been allocated to 25% of the total number of starters. *NB: In this case separate results must be sent to the FEI for each of the two groups, e.g. results for Competition 1a and for Competition 1b.*

In both cases above each group must offer the same amount of prize money. For the avoidance of doubt, it is the number of declared starters in the Competition, not the final number of starters, that determines whether the Competition must be split.

If there are more than 200 declared starters, the OC must split the Competition into three groups and provide the same percentages of additional prize money as indicated above (100% of original Competition prize money to be provided for each of the three groups if each group has 100 or fewer starters; 133% of original prize money to be provided for each group if any of the three groups has 101-110 starters; 166% of original prize money to be provided for each if any of the three groups has 111-120 starters).

³ For CSI-W Events with a Grand Prix Competition in addition to the FEI World Cup™ competitions, the minimum prize money requirements indicated above for the Grand Prix apply only to the FEI World Cup™ Competition as it has the status of a Grand Prix; the Grand Prix Competition at such Events cannot offer more prize money than the prize money offered for the FEI World Cup™ Competition. Refer to the FEI Jumping World Cup™ rules for details relating to date of implementation of this rule at CSI-W Events.

11. GLOSSARY

***Glossary FEI Jumping Rules:**

Fees:

- Compulsory Fee: Compulsory Fees are fees that may be charged by the OC for costs/services not included in the Entry Fee. Compulsory Fees, if charged, must be paid by the Athletes concerned as outlined below. Only the following Compulsory Fees may be charged by the OC, providing full details of the amount to be charged is included in the Schedule and approved by the FEI:
 - NF fee if applicable
 - NF medication control programme fee if applicable
 - FEI EADCMR fee if applicable (OC to indicate in the Schedule if the EADCMR fee is included in the Entry Fee or not)
 - Fee for health/customs-related documents for Horses if these have been requested by the Athlete.
 - Fee for manure disposal (maximum € 40 per horse per Event)
 - Fee for lorry parking if applicable (The fee indicated in the Schedule may only be charged per lorry not per Athlete.)
 - Fee for electric hook-up for lorry (The fee indicated in the Schedule may only be charged per lorry, not per Athlete.)
- Discretionary Fee: Discretionary Fees are fees that may be charged for optional commodities/services that may be purchased by an Athlete if he so chooses and that do not affect the equity of the Athlete's right to compete at the Event or the well-being of the Horse, such as:
 - VIP or premium parking
 - VIP table
 - Extra box for tack or for non-competing Horse
 - Extra bedding and/or fodder (details to be included e.g. shavings, straw, hay)
 - Premium stabling (all stabling at the Event must meet minimum FEI requirements)
- Entry Fee: The Entry Fee is the fee charged to participate in an Event with one Horse and covers the following:
 - Stabling of one Horse for the duration of the Event (includes cleaning and disinfecting stables before the event, including between Events that are part of Tours, water and

electricity in the stables, first bedding or a fixed amount of bedding depending on the type of event and 24 hour security services for the stables)

- Use of all facilities at the Event (no infrastructure fees may be charged)
- Right to participate in all Competitions in accordance with the conditions in the Schedule (no nomination fees or start fees may be charged)
- Administrative/Office fees (includes all services relating to administration of the Event and running of the Competitions: data/results/timing services, bookkeeping and accreditation services)

XV. ANNEXES

1. FEI ENTRY SYSTEM

Please fill the form below in order to provide you and the other members of your committee or your IT Providers access to the FEI Entry System.

FEI ID¹: 10052103
Name*: Tarant
First Name*: Szymon
E-Mail*: tarantevents@gmail.com
Access Rights*: ☒ Admin² ☐ Consult³
Events⁴: all

FEI ID¹: 10139344
Name*: Tarant
First Name*: Agnieszka
E-Mail*: agnieszkatarant@gmail.com
Access Rights*: ☒ Admin² ☐ Consult³
Events⁴: all

¹ If already have an FEI user account.

² Provides you the required access to manage entries and substitutions and download entries/lists.

³ You are just able to consult and download the entries/lists.

⁴ Leave the field blank if the user deals with the entries of all events in the show.

*** Mandatory Fields**

2. RESULTS

In order to proceed with the results publication and for qualification purposes the FEI requires results **to be uploaded directly on the FEI Database** within two days after the conclusion of the event.

All relevant information, file format and tutorial can be found on this page:

<https://inside.fei.org/fei/your-role/it-services/xml-format>

If you or your provider are unable to produce the required files, results will be accepted by e-mail to results@fei.org, in the proper Excel or "XML" format immediately after the event.

Please refer to compulsory format for CSIs/CSIOs/Championships and Games; the file can be downloaded using the following link:

<https://inside.fei.org/fei/your-role/it-services/results/jumping-results-forms>

All results must include FEI Passport Registration number of horses and FEI ID number of Riders.

Please note that as per Art. 109.6 (GR): OCs of International Jumping Events must inform the FEI and NFs whose teams or individuals have taken part, of the results and prize money paid to each placed Athlete and team, within two (2) days following the Event, unless otherwise specified for qualification and ranking reasons as communicated by the FEI. Failure from OCs of International Events to provide the FEI with the appropriate result(s) and/or prize money information by the aforesaid deadline and/or in the aforesaid format shall entail a warning for the first violation and thereafter a fine of CHF 1'000.- per violation.

The FEI may request a copy of the official PDF result signed by the relevant Officials at the Event.

THE APPENDIX (8 PAGES) IS PART OF THIS APPROVED AND SIGNED SCHEDULE AND MUST BE DISTRIBUTED TO ALL OFFICIALS AND NFs AND IS AVAILABLE TO OTHERS UPON REQUEST