

**This document contains:**

- The Event Covid-19 risk assessment and risk mitigation plan in accordance with the [FEI Policy for Enhanced Competition Safety during the Covid-19 Pandemic](#)
- The Event Approved Schedule

*Given the current covid-19 situation, please note that the FEI's approval of a Schedule should not be taken as an absolute guarantee that the Event will definitely go ahead. The decision whether the Event can take place must be made by the OC and NF in close consultation with the applicable domestic government and public health authorities. It is the responsibility of each Participant to check the status of the Event prior to planning his/her travel to the Event.*

# Guidance for the use of the WHO Mass Gathering Sports Addendum Risk Assessment tools in the context of COVID-19

Guidance for organizers of sports events planning mass gatherings during the current outbreak of COVID-19

Routine planning for mass gatherings includes conducting risk assessments to determine the overall risk of disease spread. In view of the current outbreak of COVID-19, a disease-specific and event-specific risk assessment and mitigation checklist has been developed for use by host countries and organizers of mass gathering, to assess the specific risk of COVID-19.

This tool includes all factors from the general WHO risk assessment and mitigation checklist for mass gatherings as well as additional factors relating to sporting events, to enable event organizers to determine a more accurate overall risk score.

The following risk assessment and mitigation checklist should be used in conjunction with the WHO Mass Gathering Sports Addendum Guidelines. In order to accurately provide answers the following risk assessment and mitigation checklist, organizers must be knowledgeable on the current COVID-19 outbreak. The organizers should reference the daily global COVID-19 situation reports provided by WHO as well as the national COVID-19 situation reports, if available.

The tool must be completed in this Excel spreadsheet (see following tabs), as the scores are automatically calculated there. After the tools have been completed, the scores you receive in the Excel spreadsheet for both sections will need to be entered into the decision matrix found on the final tab ("Overall risk scores") for the overall risk score to be determined.

It must be ensured that this risk assessment is conducted with input from local public health authorities and that the necessary personnel with expertise in mass gatherings, risk assessment, epidemiology, and infectious disease control measures are included from the initial stages of planning.

For the overall determination, factors under consideration include:

- the current stage of the COVID-19 outbreak and known transmission dynamics
- the geographical distribution and number of participants, and their individual risk profile
- the risk assessment tool
- the mitigation measures that are currently in place or feasible

*It is important to remember that while mitigation measures can reduce the risk of COVID-19 infections, they cannot completely eliminate the threat. It is WHO's view that all countries with community transmission should seriously consider postponing or reducing mass gatherings that bring people together and have the potential to amplify disease and support the recommended best practice of physical distancing. Any decision will be supported through the use of WHO tools, in particular the Risk Assessment for Mass Gatherings during COVID-19.*

*If movement restrictions and further national measures have been established in the country, the WHO RA does not apply.*

## Mass gathering risk assessment for COVID-19: addendum for sporting events

*The questions below will enable sport event organizers to review the additional considerations specific to sporting events involving mass gatherings, and thus inform their risk assessment of COVID-19 associated with the event. This will help organizers to understand and manage any additional risk from COVID-19.*

*The risk assessment should be reviewed and reassessed regularly during the planning phase and updated immediately prior to the transition to the operational phase, especially in light of the rapidly evolving nature of the outbreak. Reference should be made to the latest technical guidance and situation reports on the WHO website.*

*The risk assessment for COVID-19 associated with the sporting event must be coordinated and integrated with the host country's national risk assessment for COVID-19. The person completing the questionnaire should include input from the local public health authorities, consult WHO's latest technical guidance and ensure that there is an up-to-date evaluation of the epidemiological situation.*

### Risk assessment

**Please answer Yes (1) or No (0) to the following questions to determine a risk assessment score that incorporates factors specific to mass gathering sporting events**

<b>Additional risk of COVID-19 to the mass gathering sporting event</b>	<b>Yes (1)/No (0)</b>	<b>Score</b>
<b>Will the event be held in a country that has documented active local transmission of COVID-19 (community</b>	1	1
<b>Will the event be held in a single venue or multiple venues/cities/countries?</b>	1	1
<b>Will the event include international participants (athletes and spectators) from countries that have documented active local transmission of COVID-19</b>	1	1
<b>Will the event include a significant number of participants (athletes or spectators) at higher risk of severe COVID-19 disease (e.g., people over 65</b>	0	0
<b>Will the event include sports that are considered at higher risk of spread for COVID-19 (eg, contact sports)?</b>	0	0
<b>Will the event be held indoors?</b>	0	0
<b>Total COVID-19 risk score</b>		<b>3</b>

## Mass gathering mitigation checklist for COVID-19: addendum for sporting events

Mitigation measures assess the current effort and planning to reduce the risk of spread of COVID-19 disease for the event. As mitigation measures can reduce the overall risk of the mass gathering contributing to the spread of COVID-19, they should be taken into account after the risk assessment has occurred to gain a clearer understanding of the overall risk of transmission and further spread of COVID-19, should the mass gathering be held. Together with the risk assessment score, the mitigation measure will contribute to the decision matrix and influence the assessment of the overall risk of transmission and further spread of COVID-19 in relation to the mass gathering.

Topic	Key consideration	Score Yes/Completed (2), Maybe/In progress (1), No/Not considered (0)	Weighting	Total score	Comments
Understanding of the overview of the current COVID-19 situation by the event organizers	Have the relevant organizers and responsible staff been informed about the <b>latest available guidance on the COVID-19 outbreak</b> (official web resources available from WHO, CDC, ECDC, UN, local public health authorities)? And are the organizers and staff concerned committed to following the available guidance?	2	1	2	( <a href="https://www.who.int/publications-detail/key-planning-recommendations-for-mass-gatherings-in-the-context-of-the-current-covid-19-outbreak">https://www.who.int/publications-detail/key-planning-recommendations-for-mass-gatherings-in-the-context-of-the-current-covid-19-outbreak</a> )
	Are organizers aware of <b>global and local daily situation reports</b> as provided by WHO or local public health authorities?	2	1	2	
	Do the organizers and responsible staff understand the <b>risks and transmission routes of COVID-19, the steps that event attendees can take to limit spread, the recognized best practices</b> (including respiratory etiquette, hand hygiene, physical distancing, etc.), and the <b>travel restrictions</b> adopted by different countries that may affect the mass gathering?	2	1	2	
Event emergency preparedness and response plans	Has a <b>contingency medical response plan for COVID-19</b> been developed for this mass gathering sporting event?	2	3	6	
	Does the contingency medical response plan include <b>information about how attendees should interact with the host country healthcare system</b> (e.g. hotline/helpline telephone number, medical teams and first-aid points for the mass gathering, local health care system)?	2	3	6	
	Is there an <b>Emergency COVID-19 Outbreak Response Coordinator/Team</b> in the organizing committee or other structure structure for the mass gathering with defined roles and responsibilities, coordinating the health preparedness and response planning for the outbreak?	2	2	4	
	Has the host country or organizer requested <b>support from WHO and/or local public health authorities</b> ?	2	3	6	
	<b>Have the organizers of the mass gathering event acquired the following supplies to help reduce the risk of transmission of COVID-19?</b>				
	Personal protective equipment (e.g. masks, gloves, gowns) for onsite medical personnel	2	3	6	
	bins for safe disposal of hygienic materials (e.g. tissues, towels, sanitary products) in washrooms and changing rooms	2	3	6	
	Hand sanitizers and alcohol rubs for all entrances and throughout the venue	2	3	6	
	<b>If a person feels unwell/ shows symptoms of an acute respiratory infection during the event:</b>				
	Is there a procedure for athletes or spectators to clearly identify <b>whom to contact and how to do so</b> if they or other event participants feel unwell?	2	3	6	
	Is there a protocol on <b>whom meeting organizers should contact in the host country</b> to report suspected cases and request testing and epidemiological investigations?	2	3	6	
	Are <b>first-aid services or other medical services</b> in-place and equipped to support patients with respiratory symptoms?	2	2	4	
	Are there <b>isolation rooms or mobile isolation units</b> available onsite?	2	2	4	

	Are there any <b>designated medical facilities</b> that manage patients with COVID-19 infection in the host country?	2	2	4	
	Are there <b>transportation services with trained medical professionals</b> available to transport critically ill patients with severe acute respiratory infections to a hospital or to evacuate them from the host country, if necessary?	2	2	4	
	Has a <b>cleaning schedule</b> been developed to ensure the venue is clean and hygienic – wiping surfaces and any equipment regularly with disinfectant is strongly recommended (before, during and after the event and between each round of competition)?	2	3	6	
	Are there established <b>screening measures</b> , including temperature checks in place for participants at the point of entry, venues, routes and on-site medical facilities (first-aid points)? (Please specify in Comments what these screening measures include)	2	3	6	
	Is the host country conducting COVID-19 <b>laboratory diagnostic tests</b> ? (If Yes, please specify in comments the type of COVID-19 diagnostic test used)	2	3	6	
	Does the host country have a <b>national public health emergency preparedness and response plan</b> that can address severe respiratory diseases, including COVID-19?	2	2	4	
	Is there a <b>preliminary agreement by the host country to provide care</b> for any COVID-19 cases connected with the mass gathering?	2	3	6	
	If the event is for a duration of 14 days or longer, does the medical response plan for the event include resources and protocols for managing all public health interventions that would be necessary and supporting the national public health authorities if participants are infected and become unwell at the event? (If the event is for less than 14 days, please score 0)	0	3	0	
	If the event is for less than 14 days, does the medical response plan include protocols for organizers to notify all participants of possible exposure to COVID-19 if the organizers are made aware of any suspected or confirmed cases that attended the event? (If the event is for 14 days or longer, please score 0)	2	3	6	
<b>Stakeholder and partner coordination</b>	Is there an established mechanism for collaboration and coordination between <b>the health and security sectors</b> , which is considered as crucial?	2	2	4	
	Are there agreed, clear and easily understood processes in place for <b>reporting to external multi-sectoral stakeholders</b> (including surveillance authorities, WHO, CDC, ECDC, etc.) and disseminating risk communication messages (Media)?	0	2	0	
<b>Command and control</b>	Is there a decision-making authority/body and an agreed procedure to <b>modify, restrict, postpone or cancel the mass gathering sporting</b> event related to the evolving COVID-19 outbreak?	2	3	6	
	Are there arrangements to activate a <b>strategic health operations centre</b> if there are suspected COVID-19 cases in connection with the sporting mass gathering?	0	2	0	
	Have the mass gathering organizers and staff <b>undergone training and exercises</b> on personal safety procedures and emergency mitigation measures (including those specifically listed in this checklist)?	2	3	6	
<b>Risk communication</b>	Is there a <b>risk communication strategy</b> for the sporting mass gathering in regard to COVID-19?	2	3	6	
	Is there a <b>designated person(s) to lead media</b> activities and tasked with managing all external communications with national and international government officials, the general public, and the media? (If yes, please identify the spokesperson in comments)	2	2	4	
	Has there been <b>monitoring of national and international media and social media</b> established for <b>rumours</b> to be able to counter them early? (Please explain in the comments what protocols are in place for counter messaging)	2	2	4	

	Has coordination been set up with major <b>official media channels and social media</b> sites such as Twitter, Facebook and Instagram so that messaging can be coordinated with, and assisted by, the platforms to provide targeted messaging from organizers (including messaging to counter fake news and rumours, and proactive messaging about the status of the mass gathering, including changes)?	2	2	4	
Public health awareness of COVID-19 before and during the event	Has <b>public health advice</b> on clinical features of COVID-19, preventive measures, especially respiratory etiquette, hand hygiene practices, and physical distancing, been shared with all staff involved in the event, athletes, the public, and personnel of all relevant stakeholders?	2	3	6	
	Has information on the <b>at-risk populations</b> been provided to all athletes, the public and others so they may make an informed decision on their attendance based on their personal risks?	2	3	6	
	Has public advice included information on the meaning of the following <b>measures: quarantine, self-isolation and self-monitoring</b> ?	2	2	4	
Surge capacity	<b>Are there any surge arrangements in place in the event of a public health emergency during the mass gathering - (i.e. suspected and confirmed cases of COVID-19?</b>				
	Do these surge arrangements include funding for mitigation measures?	2	3	6	
	Do these surge arrangements include stockpiles of equipment (e.g. personal protective equipment, etc.)	2	3	6	
	Do these surge arrangements include training of extra staff?	2	2	4	
	Do these surge arrangements include volunteers?	2	2	4	
Specific mitigation measures	Will there be <b>daily health checks</b> of athletes/competitors?	2	2	4	
	Will the <b>athletes be separated from other groups</b> , such as officials, support staff and spectators, to limit transmission?	2	2	4	
	Are there measures in place to <b>limit the sharing of equipment, water bottles, towels, etc.</b> ?	0	3	0	
	Will athletes be given closed <b>containers to allow for the safe disposal or storing of all hygienic materials</b> (e.g. tissues, towels, etc.)?	0	3	0	
	Will the sporting event have <b>designated seating</b> for all spectators?	2	3	6	
	Does the designated <b>seating provided allow for physical distancing</b> between spectators (minimum of 1 metre)?	2	2	4	
	Have <b>pre-travel health checks</b> been performed on all athletes to ensure underlying co-morbidities, medications, allergies, etc. are documented?	0	2	0	

Sum of mitigation measures	196
<b>Total mitigation score (%)</b>	<b>89</b>

196

## Mass gathering overall risk score: addendum for sporting events

The decision matrix takes the risk score and the mitigation score to provide a colour determination. This colour determination identifies the total risk of transmission and further spread of COVID-19 in relation to the mass gathering. The "Colour Determination" key below the decision matrix describes the total risk for each colour.

Total COVID-19 risk score (from "Risk Assessment" Tab)	3
--	---

Total mitigation score (from "Mitigation Checklist" Tab)	89
--	----

### Risk Vs. Mitigation Matrix

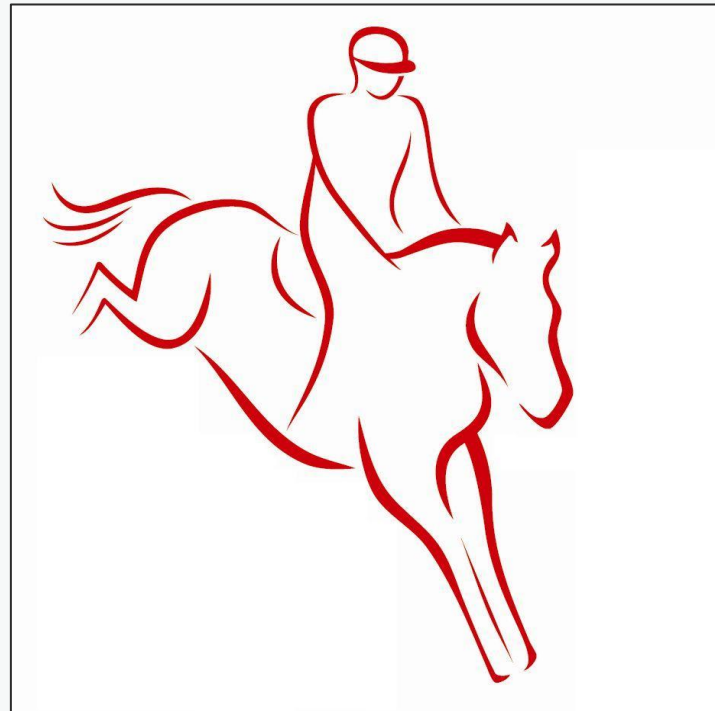
Total Risk Assessment Score	Very Prepared to Mitigate COVID-19 Impacts (76-100)	Somewhat Prepared to Mitigate COVID-19 Impacts (51-75)	Somewhat Unprepared to Mitigate COVID-19 Impacts (26-50)	Very Unprepared to Mitigate COVID-19 Impacts (0-25)
0 - Negligible	Very low	Very low	Very low	Very low
1 - Very Low Risk	Very low	Very low	Low	Low
2 - Low Risk	Low	Low	Low	Moderate
3 - Moderate Risk (low-moderate)	Low	Moderate	Moderate	Moderate
4 - Moderate Risk (high-moderate)	Moderate	Moderate	High	Very High
5 - High Risk	High	High	Very High	Very High
6 - Very High Risk	Very High	Very High	Very High	Very High

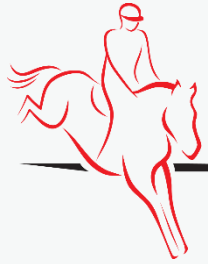
KEY FOR COLOUR DETERMINATION OF OVERALL RISK	
VERY LOW	Overall risk of transmission and further spread of COVID-19 in relation to the mass gathering is considered <u>very low</u> .
LOW	Overall risk of transmission and further spread of COVID-19 in relation to the mass gathering is considered <u>low</u> . Recommend checking whether mitigation measures can be strengthened.
MODERATE	Overall risk of transmission and further spread of COVID-19 in relation to the mass gathering is considered <u>moderate</u> . Recommend <u>significant</u> efforts to improve mitigation measures or reduce risk of transmission (decrease risk assessment score).
HIGH	Overall risk of transmission and further spread of COVID-19 in relation to the mass gathering is considered <u>high</u> . Recommend <u>significant</u> efforts to improve <u>both</u> mitigation measures and reduce risk of transmission (decrease risk assessment score).
VERY HIGH	Overall risk of transmission and further spread of COVID-19 in relation to the mass gathering is considered <u>very high</u> .

# LOTTO STRZEGOM HORSE TRIALS 2020

\*\*\*\*\*

## RISK MITIGATION PLAN





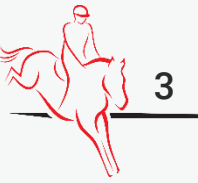
# Introduction

- Due to Covid-19 pandemic, we kindly ask you to familiarize with this document to minimise the risk of infection.
- While following these Guidelines is aimed to reduce the risk of COVID-19 infection during the competition, the risk is not eliminated.



# Introduction

---



- Every Participant of the event is obliged to familiarize with these Guidelines. Negligence of acknowledgment of the Guidelines doesn't relieve from the duty of following the rules
- All the Participants of the event (excluding Organiser's employees) are taking part voluntarily and at their own responsibility.
- All Participants are required to comply with the rules of social coexistence and conduct in accordance with applicable laws and regulations of these Guidelines and other regulations in force at the competition, established by the Organiser.
- All deciding to take part in the event (in any role) and allowed to participate in the event by Organiser during the pandemic are doing so at their own risk.
- The Organising Committee doesn't take any responsibility for infection with Covid-19 of anyone taking part in the event.

# + Participant of the event

A Participant of the event is a person whose presence on the showground is essential for the sports competition, in particular:

- Competitors
- Supporting personnel - trainer, groom, horse owner and a person responsible for a minor athlete
- Person responsible for horse transport
- Official
- Event staff
- Security staff
- TV operators
- Media representatives
- Spectators

# + Restrictions of participation

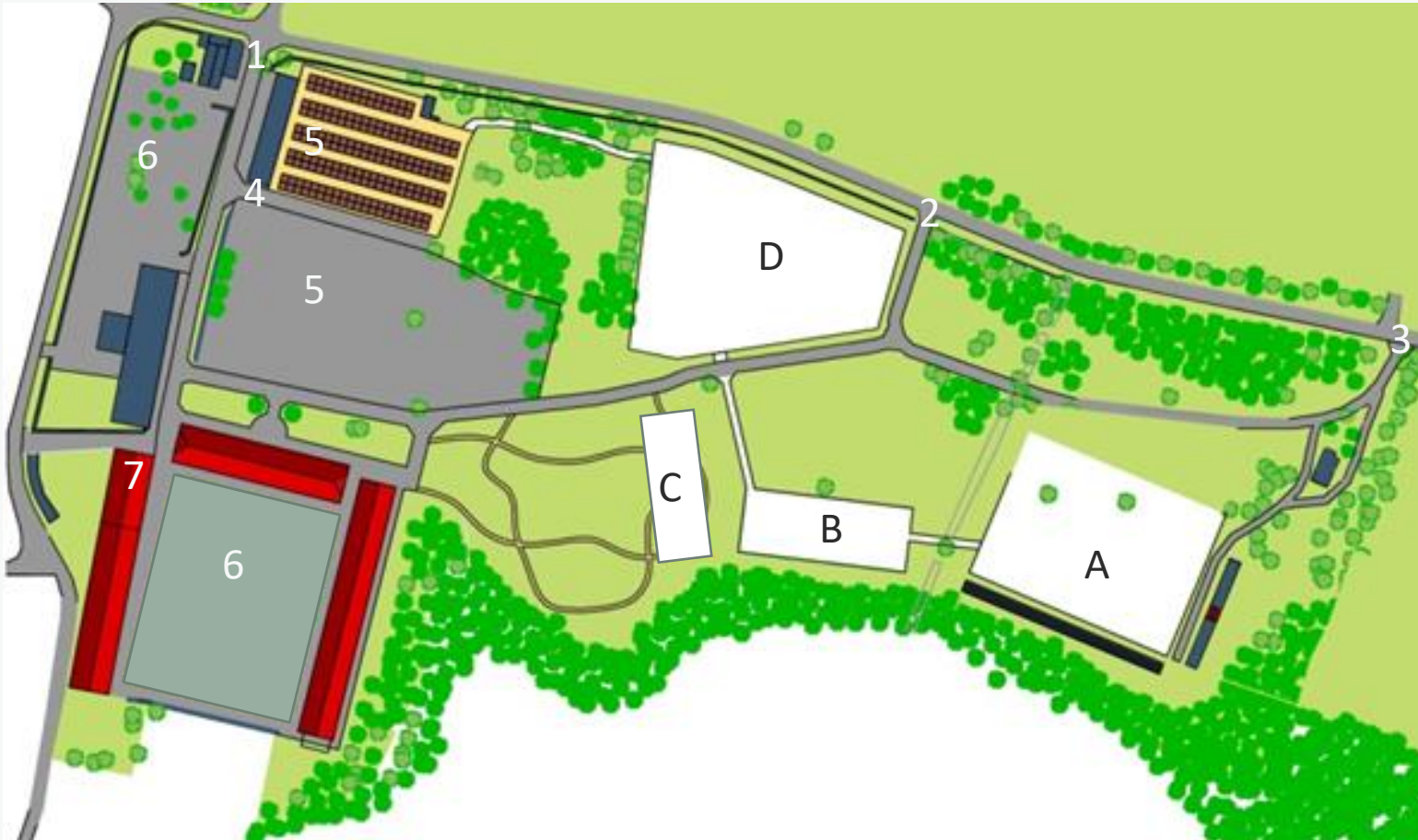
The following restriction of participation in the event must be followed:

- The event takes place with a limited number of spectators - in accordance with current regulations in Poland.
- Only healthy individuals with temperature under 37.5 °C from the accredited list will be given access to the showground.
- The Press Office will work only remotely (online). The number of Press Office Staff will be limited.
- The Organiser is going to issue a limited number of PRESS and PHOTO accreditations – two accreditations per editorial team /except for Official photographers of the Organiser and the FEI/.

# + The procedure of entering the showground

1. All Participants of the event are entering the showground using only the entry or gate specified by the Organiser. The control points and gates are clearly marked on the map. At the control point, Security Staff checks and verifies all the participants from the list provided by National Federations, performs a health interview and measures the temperature.
2. A measurement of temperature is an obligatory and anonymous procedure.
3. If the temperature is greater than 37.5 degrees C, the person cannot enter the venue
4. Refusing to follow the procedure of taking the temperature results in denying the access to the showground.
5. During the control procedure, a member of the security staff has a right to:
  - a) Ask for an ID document
  - b) Ask to leave the vehicle
7. Each Participant given the access to the showground will be marked with a wristband.
8. In case of any health issues reported by any participant, the security staff will not permit access to the showground and will inform the Organiser and Medical Staff.

# + MAP OF THE SHOWGROUND



1. Gate I - control point
2. Gate II - control point
3. Gate III - control point
4. Stable gate
5. Stable
6. Car park
7. Isolation space

# + The procedure of entering the showground

Each Participant is responsible for going through the control point and the procedure of entering the showground to get the wristband for the day.

Entering the showground without the wristband will result with an admin charge of 500 EUR, and in case of repeated violation of the rules, expulsion from the showground.

# + Entry authorisation

## Gate I

- ❖ Competitors
- ❖ Supporting personnel
- ❖ Person responsible for horse transport
- ❖ Officials
- ❖ Event staff
- ❖ Security staff

## Gate II

- ❖ Officials
- ❖ Sponsors
- ❖ Exhibitors
- ❖ Catering
- ❖ Event Staff
- ❖ Security staff

## Gate III

- ❖ Spectators
- ❖ Media representatives
- ❖ TV operators
- ❖ Event Staff
- ❖ Security staff

# + Security on the showground

1. Each Participant must :
  - a) Cover, mask or shield the mouth and nose unless there's a 1,5m distance from other Participants in the same space; this rule excludes an Athlete sitting on the horse;
  - b) Systematically sterilise hands at the stations located in toilets area, show office, competition zone, stables.
2. The Organiser will assign a Steward cooperating with the Organiser, who will coordinate and supervise the security system, especially the logistics of Participants, access to sanitizers, covering of mouth and nose by Participants.
3. All the rooms used during the event will be disinfected after each day of the event.
4. There won't be access to showers at the showground.

# + Security on the showground

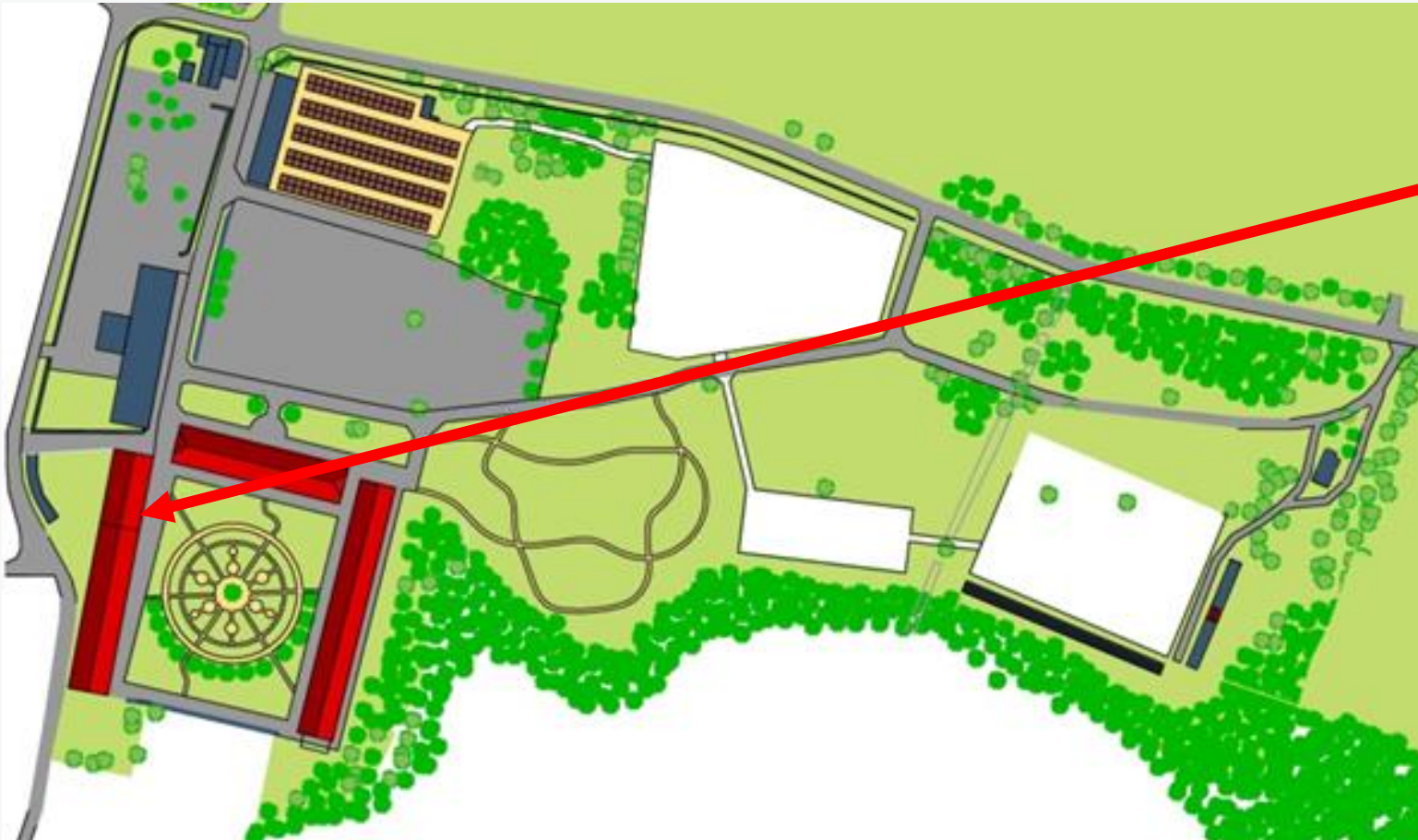
The most common symptoms of Covid-19 are fever, dry cough and tiredness. Other symptoms that are less common and may affect some patients include: aches and pains, nasal congestion, headache, conjunctivitis, sore throat, diarrhoea, loss of taste or smell or a rash on skin or discoloration of fingers or toes. These symptoms are usually mild and begin gradually (Source: WHO website: <https://www.who.int/emergencies/diseases/novel-coronavirus-2019/question-and-answers-hub/q-a-detail/q-a-coronaviruses>) and the Participants with symptoms must immediately:

1. Go to the isolation space assigned by the Organiser.
2. Call the Organizer: 0048 601 769 772.

The Organiser will contact the Regional Sanitary and Epidemiological Station, competent for the showground of the event, or the 24-hour NFZ hotline 800-190-590.



# + Security on the showground



Isolation space for individuals  
with symptoms of Covid-19



# + Limitations and guidelines for specific groups of Participants

## Athletes

- Athletes can access Car Park zone, Stables, Show Office and Competition zone where they need to keep **1,5m** of social distance.
- Minor Athletes can be accompanied by their representative (one per Athlete).
- Athletes are not allowed in the Ground Jury box. All the issues are solved remotely. All official protests are managed in the Show Office as per PZJ and FEI rules.
- Cross Country and Show jumping test walking takes place keeping the 1,5m social distance rule.

# + Limitations and guidelines for specific groups of Participants

## TRAINERS

- Trainers can access the Car Park zone, Stables, Show Office and Competition zone, where they need to keep 1,5m of social distance.
- Because of limitations of direct contact, before dressage and cross country, test trainers give their instructions from the outside of the warm up area and keep the 1,5m social distance.
- Before the jumping test, the trainer is allowed to enter the warm up arena only 15 minutes before the rider's start.



# + Limitations and guidelines for specific groups of Participants

## GROOMS AND SUPPORTING TEAM

- Grooms can access the Car Park zone, Stables and Competition zone outside the warm up arena and competition area where they need to keep 1,5m of social distance.
- In case a rider is not accompanied by a trainer, the groom is allowed to enter the warm up area only 15 minutes before the rider's start.
- The Supporting Team can access the Car Park zone, Stables and Competition zones where they need to keep 1,5m of social distance.

# + Limitations and guidelines for specific groups of Participants

## OFFICIALS

- Officials (i.e. judges, scribes, Ground Jury assistants), while being indoors (i.e. judge's hut in dressage, GJ box in jumping test, control centre in cross country test), must wear head shields.
- Officials will be given disposable gloves.
- Officials will have access to separate toilet.

# + Limitations and guidelines for specific groups of Participants

## CAR PARK ZONE

- Only Participants of the Event have access to Car Park Zone.
- A distance of 1,5m between vehicles has to be kept.
- All Participants in the Car Park Zone have to keep 2 metre distance
- Gatherings of more than 10 people are strictly forbidden in the Car Park Zone.



# + Limitations - Officials

- Only Officials and essential staff responsible for running the test are allowed in GJ box area.
- The distance between each working post must be 1,5m, or the posts have to be divided with a screen or everyone has to wear a head shield.



# + Limitations in the Show Office

- The distance between each working post must be 1,5m or the posts have to be divided with a screen or everyone has to wear a head shield.
- The number of people allowed in the Show Office is determined on the square meter space- the coefficient should be 10m<sup>2</sup> per 1 person, under the condition that there's one person being served at the post.
- Access to the Show Office is limited to Staff, Officials, Athletes and Supporting Team.



# + Limitations for media

1. Press Office will work only remotely (online).
2. The number of Press Office Staff will be limited.
  - The Organiser is going to issue a limited number of PRESS and PHOTO accreditations - one per editorial office /except Official photographers of the Organiser and the FEI/
  - Only active journalists, photographers or television crews working for registered media and official internet services can apply for accreditation. No accreditation will be given to bloggers or freelancers, unless they have a documented cooperation with beforementioned media.
3. Access to the showground is only given to:
  - Press Office Staff - press staff, social media staff, photo staff, video staff, Media Partners representatives
  - FEI accredited media - FEI TV, photographer
  - TV coverage staff
  - Online coverage staff
  - Accredited media
4. The Organiser will **not** provide a Press Office or Media Room for accredited media

**All Media representatives are to fill in the health check form and follow the procedure of temperature measurement every day. Also, they must inform the Organiser about the most common symptoms of Covid 19.**

**The most common symptoms of Covid-19 are fever, dry cough, and tiredness. Other symptoms that are less common and may affect some patients include aches and pains, nasal congestion, headache, conjunctivitis, sore throat, diarrhea, loss of taste or smell or a rash on skin or discoloration of fingers or toes. These symptoms are usually mild and begin gradually. (Source: WHO website: <https://www.who.int/emergencies/diseases/novel-coronavirus-2019/question-and-answers-hub/q-a-detail/q-a-coronaviruses>).**

# + Limitations for sponsors

The number of sponsor representatives who will have access to the showground and to the specific zones will be limited.

- The Organiser allows the entry of a group of max. of 8 persons under the condition of keeping 1,5m social distance rule or using masks or face shields, covering the nose and mouth
- The Organiser will open a hospitality zone for Sponsors with a limited number of people
- Sponsor representatives are only allowed to access the Competition zone

**All Sponsor representatives are to fill in the health check form and follow the procedure of temperature measurement every day. Also, they must inform the Organiser about the most common symptoms of Covid 19.**

**The most common symptoms of Covid-19 are fever, dry cough, and tiredness. Other symptoms that are less common and may affect some patients include aches and pains, nasal congestion, headache, conjunctivitis, sore throat, diarrhoea, loss of taste or smell or a rash on skin or discoloration of fingers or toes. These symptoms are usually mild and begin gradually. (Source: WHO website: <https://www.who.int/emergencies/diseases/novel-coronavirus-2019/question-and-answers-hub/q-a-detail/q-a-coronaviruses>).**



# + Limitations for spectators

The number of spectators who will have access to the showground will be limited.

- The Organiser allows entering of spectators under the condition of keeping 1,5m social distance rule or using of masks or face shield, covering the nose and mouth.
- Only half of the seats at the grandstands can be occupied.

**All spectators are to fill in the health check form and follow the procedure of temperature measurement every day. Also, they must inform the Organiser about the most common symptoms of Covid 19.**

**The most common symptoms of Covid-19 are fever, dry cough, and tiredness. Other symptoms that are less common and may affect some patients include aches and pains, nasal congestion, headache, conjunctivitis, sore throat, diarrhoea, loss of taste or smell or a rash on skin or discoloration of fingers or toes. These symptoms are usually mild and begin gradually. (Source: WHO website: <https://www.who.int/emergencies/diseases/novel-coronavirus-2019/question-and-answers-hub/q-a-detail/q-a-coronaviruses>).**



# + Limitations for trade stands

1. The number of trade stands at the event is limited.
2. All the stands at the event must follow the Guidelines of Polish government on providing safety for employees and customers during the pandemic.
  - The distance between the employees should be 1,5m and if that's impossible, all employees should have Personal Protective Equipment (gloves, masks).
  - All staff serving customers must wear gloves and masks
  - All individuals queuing should keep min. 1,5m distance
  - At the entrance and at the till point there should be hand sanitizer available

**All the staff of trade stands is to fill in the health check form and follow the procedure of temperature measurement every day. Also, they must inform the Organiser about the most common symptoms of Covid 19. The most common symptoms of Covid-19 are fever, dry cough, and tiredness. Other symptoms that are less common and may affect some patients include aches and pains, nasal congestion, headache, conjunctivitis, sore throat, diarrhoea, loss of taste or smell or a rash on skin or discoloration of fingers or toes. These symptoms are usually mild and begin gradually. (Source: WHO website: <https://www.who.int/emergencies/diseases/novel-coronavirus-2019/question-and-answers-hub/q-a-detail/q-a-coronaviruses>).**



# + Limitations for hospitality/ catering

All the stands at the event must follow the Guidelines of Polish government on providing safety for employees and customers during a pandemic.

- The distance between the employees should be 1,5m and if that's impossible, all employees should have Personal Protective Equipment (gloves, masks).
- All cooks and staff serving customers must wear gloves and masks
- All individuals queuing should keep min. 1,5m distance
- At the order collecting points and till points there should be hand sanitizer available
- Tables should have a min. 1,5m distance.
- All the tables should be disinfected after each use.

**All the hospitality/catering staff is to fill in the health check form and follow the procedure of temperature measurement every day. Also, they must inform the Organiser about the most common symptoms of Covid 19. The most common symptoms of Covid-19 are fever, dry cough, and tiredness. Other symptoms that are less common and may affect some patients include aches and pains, nasal congestion, headache, conjunctivitis, sore throat, diarrhoea, loss of taste or smell or a rash on skin or discoloration of fingers or toes. These symptoms are usually mild and begin gradually. (Source: WHO website: <https://www.who.int/emergencies/diseases/novel-coronavirus-2019/question-and-answers-hub/q-a-detail/q-a-coronaviruses>).**

# + Appendix

## FORM - HEALTH INTERVIEW



### HEALTH INTERVIEW

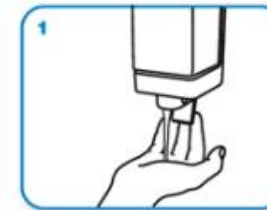
- 1) Were you diagnosed with SARS CoV-2 in the last 14 days?  
☐ Yes ☐ No
- 2) Did you have contact with the person diagnosed with SARS CoV-2 in the last 14 days?  
☐ Yes ☐ No
- 3) Is your child/pupil or anyone in your household in quarantine now?  
☐ Yes ☐ No
- 4) Do you or anyone in your household have the most common symptoms of Covid 19.  
The most common symptoms of Covid-19 are fever, dry cough, and tiredness. Other symptoms that are less common and may affect some patients include aches and pains, nasal congestion, headache, conjunctivitis, sore throat, diarrhoea, loss of taste or smell or a rash on skin or discoloration of fingers or toes. These symptoms are usually mild and begin gradually.  
☐ Yes ☐ No
- 5) Does anyone in your household had any symptoms mentioned above in the last 14 days?  
☐ Yes ☐ No

# + Appendix

## CLEAN HANDS PROTECT AGAINST INFECTION



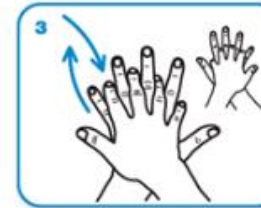
Wet hands with water



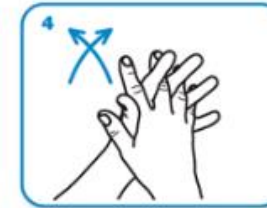
apply enough soap to cover all hand surfaces.



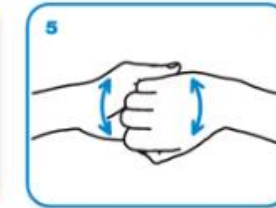
Rub hands palm to palm



right palm over left dorsum with interlaced fingers and vice versa



palm to palm with fingers interlaced



backs of fingers to opposing palms with fingers interlocked



rotational rubbing of left thumb clasped in right palm and vice versa



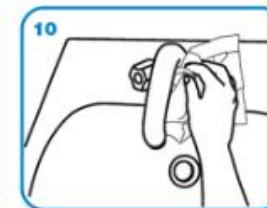
rotational rubbing, backwards and forwards with clasped fingers of right hand in left palm and vice versa.



Rinse hands with water



dry thoroughly with a single use towel



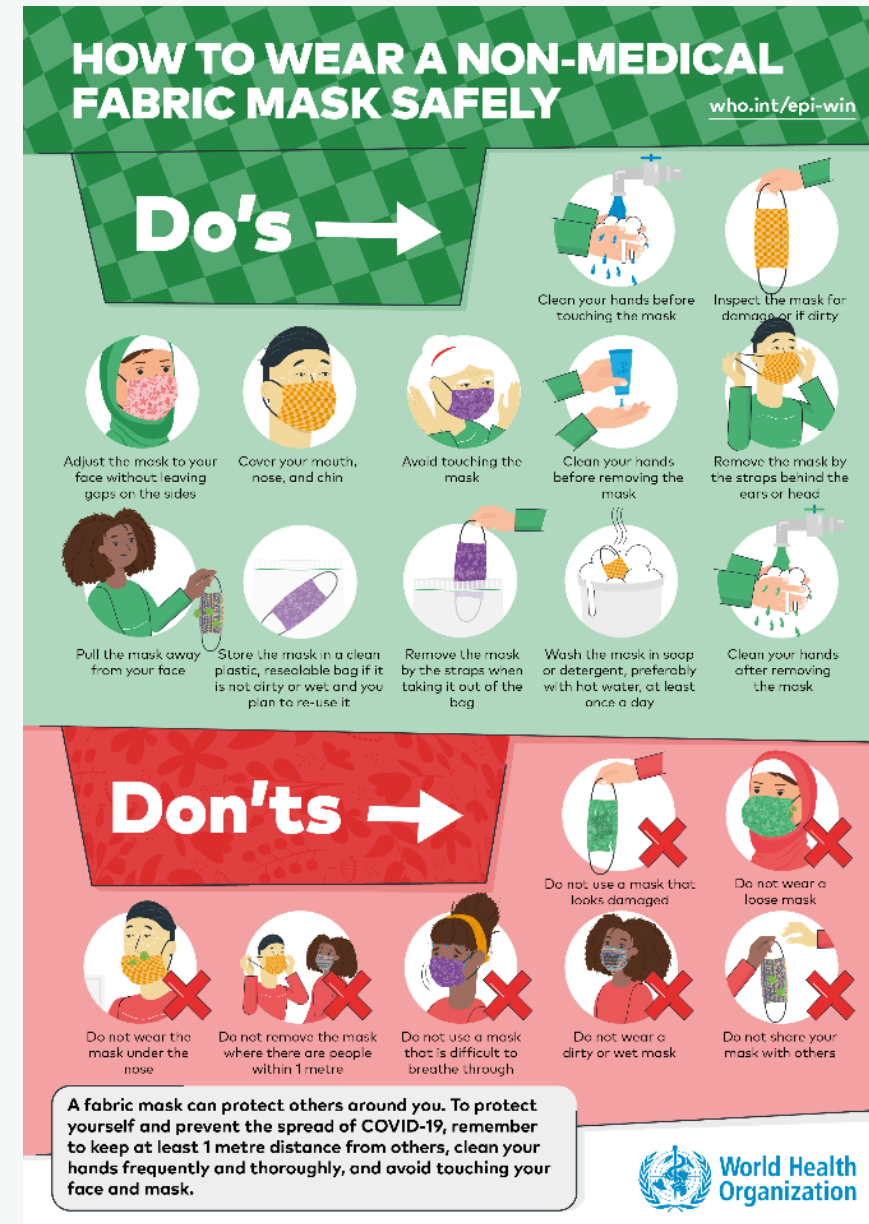
use towel to turn off faucet



...and your hands are safe.

# + Appendix

## HOW TO WEAR MASK SAFELY





## THE SCHEDULE OF INTERNATIONAL EVENTING COMPETITION

### LOTTO STRZEGOM HORSE TRIALS

**27-30.08.2020**

CCI1 \* -INTRO, CCI2-S, CCI2\*-S, CCI3\*-S,  
CCI2\*-S-Juniors CCI3\*-S – Young Riders  
CCIO4\*-S – Nations Cup  
CCIP2-L, CCI2 \*-L, CCI3\*-L, CCI4\*-L



## I. DENOMINATION OF THE EVENT

**VENUE:** STRZEGOM

**DATE:** 27-30.08.2020

**NF:** PL

### EVENT CATEGORIES:

Long	Short	Long	Short
CCI5*-L <input type="checkbox"/>	CCI(O)4*-S <input checked="" type="checkbox"/>	CCIYR3*-L <input type="checkbox"/>	CCIYR3*-S <input checked="" type="checkbox"/>
CCI(O)4*-L <input checked="" type="checkbox"/>	CCI(O)3*-S <input checked="" type="checkbox"/>	CCIJ2*-L <input type="checkbox"/>	CCIJ2*-S <input checked="" type="checkbox"/>
CCI(O)3*-L <input checked="" type="checkbox"/>	CCI(O)2*-S <input checked="" type="checkbox"/>	CCIIH3*-L <input type="checkbox"/>	CCIIH3*-S <input type="checkbox"/>
CCI(O)2*-L <input checked="" type="checkbox"/>		CCIIH2*-L <input type="checkbox"/>	CCIIH2*-S <input type="checkbox"/>

CCI1\*-Intro ☒

CCI(O)P1-L ☐ CCI(O)P1-S ☐  
 CCI(O)P2-L ☒ CCI(O)P2-S ☐  
 CCI2\*-L reserved for ponies ☐ CCI2\*-S reserved for ponies ☐

### CHAMPIONSHIP CATEGORIES:

Championship 4\* ☐ Championship 3\* ☐ Championship 2\* ☐  
 Senior ☐ Young Rider ☐ Junior ☐ Pony ☐  
 Young Horses ☐

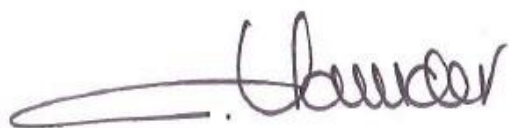
Championship official title: (as per contract)

## II. GENERAL CONDITIONS

- FEI Statutes, 24<sup>th</sup> edition, effective 19 November 2019
- FEI General Regulations, 24<sup>th</sup> edition, effective 1<sup>st</sup> January 2020
- FEI Veterinary Regulations, 14<sup>th</sup> edition, effective 1 January 2018, updates effective 1<sup>st</sup> January 2020
- FEI Eventing Rules and its Annexes, 25<sup>th</sup> Edition, effective 1<sup>st</sup> January 2020
- Equine Anti-Doping and Controlled Medication Regulations (EADCMR), 2<sup>nd</sup> Edition, effective 1<sup>st</sup> January 2018, updates effective 1<sup>st</sup> January 2020
- FEI Anti-Doping Rules for Human Athletes (ADRHA), based upon the 2015 WADA Code, effective 1<sup>st</sup> January 2015
- The FEI Policy for Enhanced Competition Safety during the Covid-19 Pandemic, effective as of 1 July 2020 and until further notice
- All subsequent published revisions/updates, the provisions of which will take precedence.

\*\*\*\*\*

Approved by the FEI, Lausanne, on 15 July 2020, modified on 24 July 2020, modified on 18 August 2020



Catrin Norinder  
FEI Director Eventing and Olympic

Draft schedules are to be sent by e-mail to [eventingschedules@fei.org](mailto:eventingschedules@fei.org)

## TABLE OF CONTENTS

<b>I. DENOMINATION OF THE EVENT .....</b>	<b>1</b>
<b>II. GENERAL CONDITIONS .....</b>	<b>1</b>
<b>III. THE FEI CODE OF CONDUCT FOR THE WELFARE OF THE HORSE .....</b>	<b>4</b>
<b>IV. GENERAL INFORMATION .....</b>	<b>5</b>
1. ORGANISER .....	5
2. ORGANISING COMMITTEE .....	5
3. EVENT DIRECTOR .....	5
<b>V. OFFICIALS .....</b>	<b>6</b>
<b>VI. INVITATIONS .....</b>	<b>8</b>
1. GENERAL .....	8
2. ENTRY RIGHT TO SHOWGROUNDS/ACCREDITED PERSONS .....	8
<b>VII. ENTRIES .....</b>	<b>8</b>
1. ENTRY DATES AND ENTRY FEES .....	8
2. OTHER FEES .....	9
3. NO-SHOWS/LATE WITHDRAWALS .....	10
4. QUALIFICATION .....	10
<b>VIII. TIMETABLE .....</b>	<b>11</b>
1. TIMETABLE (TO BE PROVIDED PER CATEGORY/LEVEL IF MULTIPLE EVENTS) .....	11
<b>IX. COMPETITION DETAIL .....</b>	<b>14</b>
<b>X. FACILITIES OFFERED .....</b>	<b>25</b>
1. ATHLETES .....	25
2. GROOMS .....	25
<b>XI. LOGISTICAL/ADMINISTRATIVE/TECHNICAL .....</b>	<b>26</b>
1. DRAW .....	26
2. COMPETITION ARENA(S) .....	26
3. PRACTICE ARENA(S) .....	26
4. STABLES .....	26
5. SCORING/TIMING PROVIDER .....	26
6. OTHER TECHNOLOGY/SERVICE PROVIDER(S) .....	26
7. PRIZE GIVING CEREMONY .....	27
8. ADVERTISING ON ATHLETES AND HORSES .....	27
9. TICKETING .....	27
10. BETTING .....	27
11. TRANSPORT REIMBURSEMENT HORSES / PONIES .....	27
12. WELCOME .....	28
13. LOCAL TRANSPORTATION - ARRANGEMENTS FROM HOTEL TO SHOWGROUNDS .....	28
14. LORRY/CARAVAN FACILITIES .....	28
15. SUSTAINABILITY .....	28
<b>XII. VETERINARY MATTERS .....</b>	<b>29</b>
1. CUSTOMS FORMALITIES .....	29
2. HEALTH REQUIREMENTS .....	29
3. NATIONAL REQUIREMENTS .....	29
4. PONIES .....	29
5. INJURY SURVEILLANCE .....	29
6. TRANSPORT OF HORSES .....	30

7.	VENUE ARRIVAL INFORMATION & FITNESS TO COMPETE .....	30
7.1.	PASSPORTS. FEI General Regulations Article 137.....	30
7.2.	VACCINATIONS - EQUINE INFLUENZA. FEI Veterinary Regulations Article 1003.....	30
7.3.	EXAMINATION ON ARRIVAL. FEI Veterinary Regulations Article 1031 .....	31
7.4.	HORSE INSPECTIONS. FEI Veterinary Regulations Articles 1034-1042.....	31
7.5.	LIMB SENSITIVITY EXAMINATION. FEI Veterinary Regulations Articles 1048-1053 .....	31
8.	EQUINE ANTI-DOPING AND CONTROLLED MEDICATION PROGRAMME (EADCMP). FEI VETERINARY REGULATIONS, CHAPTER VII .....	31
8.1.	SAMPLING. FEI VETERINARY REGULATIONS CHAPTER VII .....	31
8.2.	ELECTIVE TESTING. FEI VETERINARY REGULATIONS ARTICLES 1057 AND 1058.....	31
<b>XIII.</b>	<b>HUMAN ANTI-DOPING .....</b>	<b>32</b>
<b>XIV.</b>	<b>ADDITIONAL INFORMATION .....</b>	<b>32</b>
1.	THE POLICY FOR ENHANCED COMPETITION SAFETY DURING THE COVID-19 PANDEMIC.....	32
2.	MEDICAL INFORMATION FORM FOR ARMBANDS .....	33
3.	INSURANCES AND NATIONAL REQUIREMENTS.....	33
3.1.	ATHLETES, OWNERS AND SUPPORT PERSONNEL .....	33
PRESS EQUIPMENT AND OTHER ITEMS LEFT IN THE PRESS WORKROOM, PRESS LOCKERS, THE PRESS TRIBUNE OR ANYWHERE ON THE SHOWGROUNDS ARE LEFT ENTIRELY AT THE OWNER'S RISK. THE ORGANISING COMMITTEE DOES NOT ACCEPT ANY RESPONSIBILITY FOR ANY LOSS OR DAMAGE TO SUCH EQUIPMENT OR ITEMS. MEMBERS OF THE PRESS ARE ADVISED NOT TO LEAVE ANY EQUIPMENT OR PERSONAL ITEMS UNATTENDED. ....		
3.2.	ATHLETES AND OWNERS.....	34
4.	PROTESTS/APPEALS.....	34
5.	DISPUTES .....	34
6.	MODIFICATION TO SCHEDULE .....	34
7.	ADDITIONAL INFORMATION FROM THE ORGANISER.....	35
8.	MINIMUM AGE LIMITATION.....	35
9.	PRIZEMONEY DISTRIBUTION .....	35
<b>XV.</b>	<b>ANNEXES.....</b>	<b>36</b>

### III. THE FEI CODE OF CONDUCT FOR THE WELFARE OF THE HORSE

The Fédération Equestre Internationale (FEI) expects all those involved in international equestrian sport to adhere to the FEI's Code of Conduct and to acknowledge and accept that at all times the welfare of the horse must be paramount and must never be subordinated to competitive or commercial influences.

1. At all stages during the preparation and training of competition horses, welfare must take precedence over all other demands. This includes good horse management, training methods, farriery and tack, and transportation.
2. Horses and Athletes must be fit, competent and in good health before they are allowed to compete. This encompasses medication use, surgical procedures that threaten welfare or safety, pregnancy in mares and the misuse of aids.
3. Events must not prejudice horse welfare. This involves paying careful attention to the competition areas, ground surfaces, weather conditions, stabling, site safety and fitness of the horse for onward travel after the event.
4. Every effort must be made to ensure that horses receive proper attention after they have competed and that they are treated humanely when their competition careers are over. This covers proper veterinary care, competition injuries, euthanasia and retirement.
5. The FEI urges all involved with the sport to attain the highest levels of education in their areas of expertise.

The Long version of this Code can be obtained from the Fédération Equestre Internationale, HM King Hussein I Building, Chemin de la Joliette 8, 1006 Lausanne, Switzerland. Telephone: +41 21 310 47 47. The Code is available in English. The Code is also available on the FEI's website: <https://inside.fei.org/fei/regulations/general-rules>.

## **IV. GENERAL INFORMATION**

### **1. ORGANISER**

Name: LKS STRAGONA STRZEGOM  
Address: MORAWA 36, 58-150 Strzegom POLAND  
Telephone: 0048 748554042  
Fax:  
Email: [office@stragona.pl](mailto:office@stragona.pl)  
Website: [www.StrzegomHorseTrials.pl](http://www.StrzegomHorseTrials.pl)

#### Contact Details Show Ground:

Address: Morawa 36, 58-150 Strzegom  
Telephone: 0048748554042  
GPS Coordinates: N50° 58' 14.187" , E16° 23' 46.634"

Accessibility details (directions by road, nearest airport / train station):

**By car:** 14 km from Motorway A4 direction Strzegom

**By plane:** Airport Wrocław – 50 km from Main Arena (approx 40 min.)

**By train:** International Train Station Wrocław – 55 km from Main Arena

### **2. ORGANISING COMMITTEE**

Honorary President:  
President of the Event: Marcin Konarski  
Show Secretary: Agnieszka Tymczyszyn  
Press Officer: Agnieszka Chmieleńska

### **3. EVENT DIRECTOR**

Name: Marta Wójcik  
Address: Morawa 36, 58-150 Strzegom  
Telephone: 0048748554042  
Email: [office@stragona.pl](mailto:office@stragona.pl)

### **4. STABLEMANAGER**

Name: Małgorzata Siczyńska  
Telephone: 0048748554042  
Email: [office@stragona.pl](mailto:office@stragona.pl)

## V. OFFICIALS

Please note that the schedule has been approved under the provision that all appointed Officials have successfully passed the online FEI Competency Evaluation Test.

Ref	Panel	Competition	Function	FEI ID	NAME	NF	Level (Nat, 1, 2, 3)	Contact details
1	Ground Jury 1 <sup>st</sup> Competition	CCI4*-L	Ground Jury President	10093780	Katarzyna Konarska	POL	3	<a href="mailto:k.konarska@stragona.pl">k.konarska@stragona.pl</a>
			Ground Jury Member	10007331	Nice Attolico Guglielmi	ITA	2	<a href="mailto:niceattolico@gmail.com">niceattolico@gmail.com</a>
			Ground Jury Member	10052424	Gerd Kuest	GER	3	<a href="mailto:Info@classic-horse.de">Info@classic-horse.de</a>
	Ground Jury 2 <sup>nd</sup> Competition	CCIO4*-S Nations Cup CCII1*-Intro	Ground Jury President	10093780	Katarzyna Konarska	POL	3	<a href="mailto:k.konarska@stragona.pl">k.konarska@stragona.pl</a>
			Ground Jury Member	10002168	Marina Sciocchetti Campello	ITA	2	<a href="mailto:marinasciocchetti@gmail.com">marinasciocchetti@gmail.com</a>
	Ground Jury 3 <sup>th</sup> Competition 4th Competition 5th Competition	CCI3* S CCIIY3* S CCI2* L	Ground Jury President	10007331	Nice Attolico Guglielmi	ITA	2	<a href="mailto:niceattolico@gmail.com">niceattolico@gmail.com</a>
			Ground Jury Member	10052424	Gerd Kuest	GER	3	<a href="mailto:Info@classic-horse.de">Info@classic-horse.de</a>
	Ground Jury 3 <sup>rd</sup> Competition	CCI2* S CCIIJ2* S CCIP2-L CCI3* L	Ground Jury President	10103463	Nicola Nicholson	FRA	2	<a href="mailto:nickymnicholson@orange.fr">nickymnicholson@orange.fr</a>
			Ground Jury Member	10168193	Elżbieta Dabrowska	POL	Nat	<a href="mailto:eladabrowska@op.pl">eladabrowska@op.pl</a>
2	Technical Delegate	CCI4* - L & S CCI2* - L & S & S Juniors	Technical Delegate	10052716	Mathias Otto-Erley	GER	3	<a href="mailto:m.otto-erley@web.de">m.otto-erley@web.de</a>
		CCI3* - L & S & S Young Riders CCIP2-L	2 <sup>nd</sup> Technical Delegate	10013770	Adelmo Mazza	ITA	2	<a href="mailto:adelmomazza3@virgilio.it">adelmomazza3@virgilio.it</a>
		CCI1 Intro	3 <sup>rd</sup> Technical Delegate	10049773	Tomasz Mossakowski	POL	3	<a href="mailto:twin@idsl.pl">twin@idsl.pl</a>
		4*	Assistant Technical Delegate	10013770	Adelmo Mazza	ITA	2	<a href="mailto:adelmomazza3@virgilio.it">adelmomazza3@virgilio.it</a>
		3*	Assistant Technical Delegate	10049773	Tomasz Mossakowski	POL	3	<a href="mailto:twin@idsl.pl">twin@idsl.pl</a>
3	Course Designer	1/2/3/	Course Designer	10004896	Marcin Konarski	POL	3	<a href="mailto:m.konarski@stragona.pl">m.konarski@stragona.pl</a>
		4*	Course Designer	10003719	Bernd Backhaus	GER	3	<a href="mailto:Bernd.backhaus@gmx.de">Bernd.backhaus@gmx.de</a>
		4*	Course Designer Assistant	10071594	Michael Mohr	GER	N	<a href="mailto:m2-ohr@t-online.de">m2-ohr@t-online.de</a>

			Course Builder		XC JUMPS – Marcin Konarski	POL		<a href="mailto:office@stragona.pl">office@stragona.pl</a>
		ALL	Jumping Course Designer	10147414	Arkadiusz Weckwert	POL	2	<a href="mailto:arek.w@poczta.onet.pl">arek.w@poczta.onet.pl</a>
4	Chief Steward		Chief Steward	10052984	Zbigniew Seibt	POL	3	<a href="mailto:zas.s@interia.pl">zas.s@interia.pl</a>
5	Assistant Stewards		Assistant Steward	10108472	Anna Augustyńska - Mincger	POL	1	<a href="mailto:anna.augustynska@onet.pl">anna.augustynska@onet.pl</a>
			Assistant Steward	10196000	Beata Pakulska	POL	N	<a href="mailto:b.pakulska@interia.pl">b.pakulska@interia.pl</a>
			Assistant Steward	10210974	Grzegorz Jasiczek	POL	N	<a href="mailto:wedancik@wp.pl">wedancik@wp.pl</a>
6	FEI Veterinary Delegate		FEI Veterinary Delegate	10013008	Małgorzata Świderek-Baran	POL		<a href="mailto:mbaran3@wp.pl">mbaran3@wp.pl</a>
			Assistant FEI Delegate					
	FEI Veterinary Commission (for Championships only)		President					
			Foreign Veterinary Delegate					
			Assistant FEI Delegate					
7	Veterinary Service Manager (VSM) (VR Art 1103) Treating Veterinarian (VR Art 1105)		Veterinary Service Manager	10049846	Janusz Okoński	POL		<a href="mailto:jokon1@o2.pl">jokon1@o2.pl</a>
			FEI Permitted Treating Vet	10086691	Wojciech Kujawski	POL		
				10086690	Michał Kornaszewski	POL		<a href="mailto:bonafidewet@gmail.com">bonafidewet@gmail.com</a>
8	Chief Medical Officer		Chief Medical Officer		Marek Dąbrowski	POL		0048 695 276245
	Medical services		Medical Services		Na Sygnale	POL		0048 695 276245
9	Farrier		Farrier		Mieczysław Kryszczyński	POL		0048 605 312 762
10	NF Delegate		NF Delegate (if applicable)					

## VI. INVITATIONS

### 1. GENERAL

Number of NFs invited	Unlimited
Number of Athletes from the host nation	unlimited
Number of Athletes per NF	unlimited
Number of Horses per Athlete	Max. 6 but max 3 Horses by class
Ballot procedure in case of excessive entries. <i>Must be specified</i>	

The number of starters will be limited to MAX. 250 in all Series/classes. If there are more than 250 entries at the closing date: priority to be given for entries with payments and for 4\* level, riders with 3 or more horses, next to 50 POL NF Horses. After 220 places are filled, the remaining entries will be placed on a waiting list and will be admitted only if there are any withdrawals from the initial 220. 30 wild card to OC decision.

Athletes are invited by the Organiser through their National Federation.

One (1) groom per athlete.

### 2. ENTRY RIGHT TO SHOWGROUNDS/ACCREDITED PERSONS

Entry right to the stable area according to FEI Veterinary Regulations Articles 1008-1009.

#### NUMBER OF ACCREDITED PERSONS:

Athlete: 1  
 Partner: 1  
 Groom: 1

Horse Owner: 2 two (2) accreditations per horse acc. to FEI-Passport

## VII. ENTRIES

### **IMPORTANT**

- Entries must be made through the FEI Entry System for all categories of this Event (<https://entry.fei.org>);
- Additional documentation can be found at: <https://inside.fei.org/fei/your-role/it-services/fei-entry-system>
- All Athletes and Horses participating in any International Competition must be registered with the FEI;
- Athletes and/or Horses present at the Event without having been entered through the FEI's Online Entry System will automatically be disqualified unless compelling circumstances warrant otherwise.

### 1. ENTRY DATES AND ENTRY FEES

Entries have to be in accordance with Art.509 of the FEI Eventing Rules, 25<sup>th</sup> edition, Updates effective 1 January 2020.

**Deadlines for Entries:**

Nominated Entries:

(NB: Nominated Entries apply to Championships and Games **ONLY**)

Closing date for Definite Entries: 3.08.2020

Last date for substitutions: 25.08.2020

**FEEES FOR HORSES**

	CCI1-Intro	CCI2-S CCI2-S	CCI2-L CCIP2-L	CCI3-S CCIP3-S	CCI3-L	CCIO4-S Nations Cup	CCI4-L
Entry fee per horse:	360 EUR	380 EUR	380 EUR	400 EUR	400 EUR	425 EUR	425 EUR
Stabling fee per horse:	Including in Entry Fee						
TOTAL fee per horse	360 EUR	380 EUR	380 EUR	400 EUR	400 EUR	425 EUR	425 EUR
	<b>All entry fee have to be paid by banks transfer and the payment confirmation have to be send</b> <b>before 20<sup>th</sup> of August to <a href="mailto:office@stragona.pl">office@stragona.pl</a></b> <b>They will be no possibility to pay by cash on site.</b>						
	All amounts include 8% VAT						

<b>EADCMP fee</b> Lower Level Events (CIMs) CHF 18 per horse per event (For definition of CIMs see Appendix E of the FEI General Regulations) Higher Level Events CHF 25 per horse per event (All other events not defined as CIMs)  Included in entry fee <input type="checkbox"/> Not included in entry fee <input checked="" type="checkbox"/>	<b>18 CHF:</b> CCI Intro, CCIP CCI2-S, CCI2*-S, CCI2*-L CCI3-S, CCI3*-S, CCI3*-L  <b>25 CHF:</b> CCIO4*-S Nations Cup CCI4*-L
Late entries /after 3.08/	All accepted entries after this date will be automatically charged 50 EUR
Change a horse/rider to another class	All Changes After: 25.08 – 12:00 will be automatically charged 25 EUR
Details entry procedure fee / Payment:	OC details: LKS STRAGONA, Morawa36, 58-150 Strzegom Payment in EUR: SANTANDER BANK POLSKA S.A. O/STRZEGOM PL 42 1090 2343 0000 0001 0499 6685 Swift codes: WBK PPLPP

**2. OTHER FEES**

All other fees must be listed hereunder with the details of the amounts to be charged and approved by the FEI. Only fees approved by the FEI and listed in the approved Schedule can be charged by the OC.

Electricity for boxes (upon request): 100EUR

Manure disposal:

Hay: daily price

Straw: daily price/first bedding free of charge/

Shavings: daily price/first bedding is not included in entry fee/

Sanitary facilities:

Lorry/ Caravan area

Parking: price:

Power supply: provided by the OC ☒ Not provided by the OC ☐ Price: 60EUR

Water supply: provided by the OC ☒ Not provided by the OC ☐ Price:

Other (please specify):

Custom Facilities 25 EUR per paper

All aforementioned amounts include VAT, if applicable

VAT number of the Organiser: **PL 884-22-76-847**

**PLEASE NOTE: All riders are reminded that in Poland is in force "viaTOOLL" system – electronic toll collection system. More information on <http://www.viatoll.pl/en/home>**

### 3. NO SHOWS/LATE WITHDRAWALS

**Amount charged and refund procedure**

Withdrawal:	
<b>Before 8.08 – 100% refund</b>	
<b>Before 15.08 – 50% refund</b>	
<b>After 15.08 – no refund</b>	
In case of withdrawal or no-shows after the date of <b>15.08.2020</b> : the athlete or the respective NF of the athlete will be held liable and have to pay full entry fee Presentation of a med. or vet. certificate will <b>not</b> exempt from having to charge fees	

### 4. QUALIFICATION

Entries have to be in accordance with Art.520 and 521 of the FEI Eventing Rules, 25th edition, effective 1 January 2020.

The eligibility to compete will be determined by a combination of the following:

- The level of the Athlete category (National, D, C, B, A) (Art.519)
- The achievement of a number of Minimum Eligibility Requirements according to the eligibility matrix of requirements (Art. 520)

## VIII. TIMETABLE

**THIS PROVISIONAL TIMETABLE WILL BE REVIEWED AT LATEST 15 AUG  
AND PUBLISH ON  
WWW.STRZEGOMHORSETRIALS.PL**

### 1. TIMETABLE (TO BE PROVIDED PER CATEGORY/LEVEL IF MULTIPLE EVENTS)

#### Short Format competition Competition

- Opening of stables  
(If applicable):  
/ Vet examination on arrival:
- Official Course Inspection:
- 1<sup>st</sup> Horse Inspection  
(If applicable):
- Declaration of Starters:
- 1st Start – Dressage:
- 1st Start -Jumping:
- 2<sup>nd</sup> Horse Inspection  
(If applicable):
- 1st Start – Cross-Country:
- Prize-giving:

	Day	Date	Time
CCI1INTRO	Tuesday	25.08.2020	08.00
CCI1 INTRO	From Tuesday	from 25.08.2020	After arrival
CCI1 INTRO	Wednesday	26.08.2020	14.00
CCI1 INTRO			
CCI1 INTRO	Wednesday	26.08.2020	16.00
CCI1 INTRO	Thursday	27.08.2020	08.00
CCI1 INTRO	Friday	28.08.2020	16.30
CCI1 INTRO			
CCI1 INTRO	Saturday	29.08.2020	09.00
CCI1 INTRO	Saturday	29.08.2020	17.30

- Opening of stables  
(If applicable):  
/ Vet examination on arrival:
- Official Course Inspection:
- 1<sup>st</sup> Horse Inspection  
(If applicable):
- Declaration of Starters:
- 1st Start – Dressage:
- 1st Start -Jumping:
- 2<sup>nd</sup> Horse Inspection  
(If applicable):
- 1st Start – Cross-Country:
- Prize-giving:

CCI2-S CCIJ2-S	Tuesday	25.08.2020	08.00
CCI2-S CCIJ2-S	From Tuesday	from 25.08.2020	After arrival
CCI2-S CCIJ2-S	Wednesday	26.08.2020	14.00
CCI2-S CCIJ2-S	Wednesday	26.08.2020	16.00
CCI2-S CCIJ2-S	Thursday	27.08.2020	11.00
CCI2-S CCIJ2-S	Saturday	29.08.2020	09.00
CCI2-S CCIJ2-S			
CCI2-S CCIJ2-S	Sunday	30.08.2020	09.00
CCI2-S CCIJ2-S	Sunday	30.08.2020	15.30

- Opening of stables  
(If applicable):

/ Vet examination on arrival:

- Official Course Inspection:

- 1<sup>st</sup> Horse Inspection:

- Declaration of Starters:

- 1st Start – Dressage:

- 1st Start -Jumping:

- 2<sup>nd</sup> Horse Inspection  
(If applicable):

- 1st Start – Cross-Country:

- Prize-giving:

- Opening of stables  
(If applicable):

/ Vet examination on arrival:

- Official Course Inspection:

- 1<sup>st</sup> Horse Inspection:

- Declaration of Starters:

- 1st Start – Dressage:

- 1st Start - Cross:

- 2<sup>nd</sup> Horse Inspection  
(If applicable):

- 1st Start – Jumping:

- Prize-giving:

- Opening of stables  
(If applicable):

/ Vet examination on arrival:

- Official Course Inspection:

- 1<sup>st</sup> Horse Inspection:

- Declaration of Starters:

- 1st Start – Dressage:

- 1st Start - Cross:

- 2<sup>nd</sup> Horse Inspection  
(If applicable):

- 1st Start – Jumping:

- Prize-giving:

CCI3-S CCY3-S	Tuesday	25.08.2020	08.00
CCI3-S CCY3-S	From Tuesday	from 25.08.2020	After arrival
CCI3-S CCY3-S	Wednesday	26.08.2020	14.00
CCI3-S CCY3-S	Wednesday	26.08.2020	16.00
CCI3-S CCY3-S	Friday	28.08.2020	08.00
CCI3-S CCY3-S	Saturday	29.08.2020	12.00
CCI3-S CCY3-S			
CCI3-S CCY3-S	Sunday	30.08.2020	12.00
CCI3-S CCY3-S	Sunday	30.08.2020	15.30

CCIO4-NC-S	Tuesday	25.08.2020	08.00
CCIO4-NC-S	From Tuesday	From 25.08.2020	After arrival
CCIO4-NC-S	Wednesday	26.08.2020	14.00
CCIO4-NC-S	Wednesday	26.08.2020	16.00
CCIO4-NC-S	Thursday	27.08.2020	09.00
CCIO4-NC-S	Saturday	29.08.2020	11.30
CCIO4-NC-S	Sunday	30.08.2020	09.00
CCIO4-NC-S	Friday	28.08.2020	15.00
CCIO4-NC-S	Saturday	29.08.2020	17.00

CCI2-L	Tuesday	25.08.2020	08.00
CCI2-L	From Tuesday	From 25.08.2020	After arrival
CCI2-L	Wednesday	26.08.2020	14.00
CCI2-L	Wednesday		16.30
CCI2-L	Wednesday	26.08.2020	16.00
CCI2-L	Thursday	27.08.2020	09.00
CCI2-L	Saturday	29.08.2020	11.00
CCI2-L	Sunday	30.08.2020	08.00
CCI2-L	Sunday	30.08.2020	11.30
CCI2-L	Sunday	30.08.2020	13.00

- Opening of stables  
(If applicable):

/ Vet examination on arrival:

- Official Course Inspection:
- 1<sup>st</sup> Horse Inspection:
- Declaration of Starters:
- 1st Start – Dressage:
- 1st Start - Cross:
- 2<sup>nd</sup> Horse Inspection  
(If applicable):
- 1st Start – Jumping:
- Prize-giving:

CCI3-L	Tuesday	25.08.2020	08.00
CCI3-L	From Tuesday	From 25.08.2020	After arrival
CCI3-L	Wednesday	26.08.2020	14.00
CCI3-L	Wednesday		16.30
CCI3-L	Wednesday	26.08.2020	16.00
CCI3-L	Thursday	27.08.2020	16.00
CCI3-L	Saturday	29.08.2020	13.20
CCI3-L	Sunday	30.08.2020	09.00
CCI3-L	Sunday	30.08.2020	13.15
CCI3-L	Sunday	30.08.2020	14.00

- Opening of stables  
(If applicable):

/ Vet examination on arrival:

- Official Course Inspection:
- 1<sup>st</sup> Horse Inspection:
- Declaration of Starters:
- 1st Start – Dressage:
- 1st Start - Cross:
- 2<sup>nd</sup> Horse Inspection  
(If applicable):
- 1st Start – Jumping:
- Prize-giving:

CCI4-L	Tuesday	25.08.2020	08.00
CCI4-L	From Tuesday	From 25.08.2020	After arrival
CCI4-L	Wednesday	26.08.2020	14.00
CCI4-L	Wednesday		16.30
CCI4-L	Wednesday	26.08.2020	16.00
CCI4-L	Thursday	27.08.2020	14.30
CCI4-L	Saturday	29.08.2020	16.00
CCI4-L	Sunday	30.08.2020	09.00
CCI4-L	Sunday	30.08.2020	14.30
CCI4-L	Sunday	30.08.2020	15.00

- Opening of stables  
(If applicable):

/ Vet examination on arrival:

- Official Course Inspection:
- 1<sup>st</sup> Horse Inspection:
- Declaration of Starters:
- 1st Start – Dressage:
- 1st Start - Cross:
- 2<sup>nd</sup> Horse Inspection  
(If applicable):
- 1st Start – Jumping:
- Prize-giving:

CCIP2-L	Tuesday	25.08.2020	08.00
CCIP2-L	From Tuesday	From 25.08.2020	After arrival
CCIP2-L	Wednesday	26.08.2020	14.00
CCIP2-L	Wednesday		16.30
CCIP2-L	Wednesday	26.08.2020	16.00
CCIP2-L	Thursday	27.08.2020	09.00
CCIP2-L	Saturday	29.08.2020	10.30
CCIP2-L	Sunday	30.08.2020	08.00
CCIP2-L	Sunday	30.08.2020	10.30
CCIP2-L	Sunday	30.08.2020	11.00

## IX. COMPETITION DETAIL

**Format :** CCI1-INTRO

**Level :** 1\*

**This competition will be in accordance with Rules for Eventing, 25th Edition,  
updated 1 January 2020**

### Technical Conditions

#### DRESSAGE TEST

FEI Eventing 2020 CCI1*-Intro
-------------------------------

#### CROSS-COUNTRY

<b>Event</b>	Length	2000-3000m.
	Speed	500 m/min
	Approx. number of efforts	20-25

#### JUMPING

<b>Event</b>	Distance	Max. 600 m
	Speed:	350 m/min
	Number of efforts:	Max. 12

#### PRIZE – CLASSIFICATION

<b>Total amount of prize money (currency)</b>	Prizes in kind
<b>Breakdown per category / placing</b> (1 prize per 4 athletes, minimum 5 prizes and 1 <sup>st</sup> prize not more than 1/3 of total prizemoney)	
<b>Other details on PM distribution</b>	

**Format :** CCI-S

**Level :** 2\*

**This competition will be in accordance with Rules for Eventing, 25th Edition,**  
*updated 1 January 2020*

## Technical Conditions

### DRESSAGE TEST

FEI Eventing 2020 - 2* B
--------------------------

### CROSS-COUNTRY

<b>Event</b>	Length	2600-3120m.
	Speed	520 m/min
	Approx. number of efforts	30

### JUMPING

<b>Event</b>	Distance	Max. 600 m
	Speed:	350 m/min
	Number of efforts:	Max. 13
	Number of Obstacles:	10-11

### PRIZE – CLASSIFICATION

<b>Total amount of prize money (currency)</b>	1000 EUR
<b>Breakdown per category / placing</b> (1 prize per 4 athletes, minimum 5 prizes and 1 <sup>st</sup> prize not more than 1/3 of total prizemoney)	I-300, II-225, III-150, IV-125, V-100 100 EUR to be divided into 25%
<b>Other details on PM distribution</b>	Pay by cash in Event Office

**Format :** CCI-S - Juniors

**Level :** 2\*

This competition will be in accordance with Rules for Eventing, 25th Edition,  
*updated 1 January 2020*

## Technical Conditions

### DRESSAGE TEST

FEI Eventing 2020 - 2* B
--------------------------

### CROSS-COUNTRY

<b>Event</b>	Length	2600-3120m.
	Speed	520 m/min
	Approx. number of efforts	30

### JUMPING

<b>Event</b>	Distance	Max. 600 m
	Speed:	350 m/min
	Number of efforts:	Max. 13
	Number of Obstacles:	10-11

### PRIZE – CLASSIFICATION

<b>Total amount of prize money (currency)</b>	Prizes in kind
<b>Breakdown per category / placing</b> (1 prize per 4 athletes, minimum 5 prizes and 1 <sup>st</sup> prize not more than 1/3 of total prizemoney)	
<b>Other details on PM distribution</b>	

**Format :** CCI- LONG

**Level :** 2\*

**This competition will be in accordance with Rules for Eventing, 25th Edition,**  
*updated 1 January 2020*

## Technical Conditions

### DRESSAGE TEST

FEI Eventing 2020 - 2* B
--------------------------

### CROSS-COUNTRY

<b>Event</b>	Length	3640-4680m.
	Speed	520 m/min
	Approx. number of efforts	30

### JUMPING

<b>Event</b>	Distance	Max. 600 m
	Speed:	350 m/min
	Number of efforts:	Max. 13
	Number of Obstacles:	10-11

### PRIZE – CLASSIFICATION

<b>Total amount of prize money (currency)</b>	1000 EUR
<b>Breakdown per category / placing</b> (1 prize per 4 athletes, minimum 5 prizes and 1 <sup>st</sup> prize not more than 1/3 of total prizemoney)	I-300, II-225, III-150, IV-125, V-100 100 EUR to be divided into 25%
<b>Other details on PM distribution</b>	Pay by cash in Event Office

**Format :** CCI-S

**Level :** 3\*

**This competition will be in accordance with Rules for Eventing, 25th Edition,**  
*updated 1 January 2020*

## Technical Conditions

### DRESSAGE TEST

FEI Eventing 2020 3* B
------------------------

### CROSS-COUNTRY

<b>Event</b>	Length	3025 - 3575 m.
	Speed	550 m/min
	Approx. number of efforts	Max. 27-32

### JUMPING

<b>Event</b>	Distance	Max. 600 m
	Speed:	350 m/min
	Number of efforts:	Max. 14
	Number of Obstacles:	10-11

### PRIZE – CLASSIFICATION

<b>Total amount of prize money (currency)</b>	1000 EUR
<b>Breakdown per category / placing</b> (1 prize per 4 athletes, minimum 5 prizes and 1 <sup>st</sup> prize not more than 1/3 of total prizemoney)	I-300, II-265, III-235, 200 EUR to be divided into 25%
<b>Other details on PM distribution</b>	Pay by cash in Event Office

**Format :** CCI-S

**- YOUNG RIDERS**
**Level :3\***

**This competition will be in accordance with Rules for Eventing, 25th Edition,**  
*updated 1 January 2020*

## Technical Conditions

### DRESSAGE TEST

FEI Eventing 2020 3* B
------------------------

### CROSS-COUNTRY

<b>Event</b>	Length	3025 - 3575 m.
	Speed	550 m/min
	Approx. number of efforts	Max. 27-32

### JUMPING

<b>Event</b>	Distance	Max. 600 m
	Speed:	350 m/min
	Number of efforts:	Max. 14
	Number of Obstacles:	10-11

### PRIZE – CLASSIFICATION

<b>Total amount of prize money (currency)</b>	Prizes in kind
<b>Breakdown per category / placing</b> (1 prize per 4 athletes, minimum 5 prizes and 1 <sup>st</sup> prize not more than 1/3 of total prizemoney)	
<b>Other details on PM distribution</b>	

**Format :** CCI- LONG

**Level :** 3\*

**This competition will be in accordance with Rules for Eventing, 25th Edition,**  
*updated 1 January 2020*

## Technical Conditions

### DRESSAGE TEST

FEI Eventing 2020 3* B
------------------------

### CROSS-COUNTRY

<b>Event</b>	Length	4400 - 5500 m.
	Speed	550 m/min
	Approx. number of efforts	Max. 30-35

### JUMPING

<b>Event</b>	Distance	Max. 600 m
	Speed:	350 m/min
	Number of efforts:	Max. 14
	Number of Obstacles:	10-11

### PRIZE – CLASSIFICATION

<b>Total amount of prize money (currency)</b>	1000 EUR
<b>Breakdown per category / placing</b> (1 prize per 4 athletes, minimum 5 prizes and 1 <sup>st</sup> prize not more than 1/3 of total prizemoney)	I-300, II-265, III-235, 200 EUR to be divided into 25%
<b>Other details on PM distribution</b>	Pay by cash in Event Office

**Format :** CCI04-S

**- NATIONS CUP**
**Level :4\***

This competition will be in accordance with **Rules for Eventing, 25th Edition,**  
*updated 1 January 2020*

## Technical Conditions

### DRESSAGE TEST

FEI Eventing 2020 4* B
------------------------

### CROSS-COUNTRY

<b>Event</b>	Length	3420 -3990m.
	Speed	570
	Approx. number of efforts	30-35

### JUMPING

<b>Event</b>	Distance	Max. 600 m
	Speed:	375 m./min
	Number of efforts:	Max. 15
	Number of Obstacles:	11-12

## PRIZE – CLASSIFICATION

### INDIVIDUAL

<b>Total amount of prize money (currency)</b>	5000 EUR
<b>Breakdown per category / placing</b> (1 prize per 4 athletes, minimum 5 prizes and 1 <sup>st</sup> prize not more than 1/3 of total prizemoney)	I-1500, II-1150, III-900, IV - 650, V- 400 400 EUR to be divided into 25%
<b>Other details on PM distribution</b>	Pay by Bank transfer – 21 days 10% TAX

### TEAM

<b>Total amount of prize money (currency)</b>	Prizes in kind
<b>Breakdown per category / placing</b> (1 prize per 4 athletes, minimum 5 prizes and 1 <sup>st</sup> prize not more than 1/3 of total prizemoney)	
<b>Other details on PM distribution</b>	

**Format :** CCI4- LONG

**Level :** 4\*

This competition will be in accordance with Rules for Eventing, 25th Edition,  
*updated 1 January 2020*

## Technical Conditions

### DRESSAGE TEST

FEI Eventing 2020 4* B
------------------------

### CROSS-COUNTRY

<b>Event</b>	Length	5700 -6270m.
	Speed	570
	Approx. number of efforts	35-40

### JUMPING

<b>Event</b>	Distance	Max. 600 m
	Speed:	375 m./min
	Number of efforts:	Max. 15
	Number of Obstacles:	11-12

### PRIZE – CLASSIFICATION

<b>Total amount of prize money (currency)</b>	5000 EUR
<b>Breakdown per category / placing</b> (1 prize per 4 athletes, minimum 5 prizes and 1 <sup>st</sup> prize not more than 1/3 of total prizemoney)	I-1500, II-1150, III-900, IV - 650, V- 400
<b>Other details on PM distribution</b>	Pay by Bank transfer – 21 days 10% TAX

**Format :** CCIP2-L

**Level :** 2\* ponies

**This competition will be in accordance with Rules for Eventing, 25th Edition,**  
*updated 1 January 2020*

## Technical Conditions

### DRESSAGE TEST

FEI Eventing 2020 2* Test B
-----------------------------

### CROSS-COUNTRY

<b>Event</b>	Length	2700-3700m.
	Speed	500-520 m/min
	Approx. number of efforts	25-30

### JUMPING

<b>Event</b>	Distance	Max. 500 m
	Speed:	350 m/min
	Number of efforts:	Max. 14

### PRIZE – CLASSIFICATION

<b>Total amount of prize money (currency)</b>	Prizes in kind
<b>Breakdown per category / placing</b> (1 prize per 4 athletes, minimum 5 prizes and 1 <sup>st</sup> prize not more than 1/3 of total prizemoney)	
<b>Other details on PM distribution</b>	

## PRIZEMONEY SUMMARY

Category	Level	Currency	Amount
CCI1-Intro	1*		Prizes in kind
CCI2-S	2*	EUR	1000
CCI3-S	3*	EUR	1000
CCIO4-S – Nations Cup - TEAM	4*	EUR	Prizes in kind
CCIO4-S – Nations Cup - Individuals	4*	EUR	5000
CCI2-L	2*	EUR	1000
CCI3-L	3*	EUR	1000
CCI4-L	4*	EUR	5000
CCI2-S - Juniors	2*		Prizes in kind
CCI3-S – Young Riders	3*		Prizes in kind
TOTAL			14.000 EUR

### **IMPORTANT**

**The total amount of prize money shown for each Competition in the schedule must be distributed. (FEI General Regulations articles 127 and 128)**

The value of the 1<sup>st</sup> prize must not exceed 1/3 of the total prize money distributed for the competition. The minimum number of prizes offered for each competition must be allocated on the basis of one prize for every commenced four Athletes, with a minimum of five prizes.

## **X. FACILITIES OFFERED**

### **1. ATHLETES**

#### **Accommodation**

Hotel:

Address:

Telephone:

At the expense of: The Organiser ☐ or Athletes ☒

Accommodated (bed and breakfast) from to

#### **Meals**

At the expense of: The Organiser ☐ or Athletes ☒

Meals provided from to

Square for OC to include additional details if necessary

### **2. GROOMS**

#### **Accommodation.**

Requests for accommodation must be sent with entries.

Accommodation will be at the expense of: Organiser ☐ Athletes ☒

Accommodated (bed and breakfast) from to

#### **Meals.**

At the expense of: The Organiser ☐ or Athletes ☒

Meals provided from to

Square for OC to include additional details if necessary

**NB:** If applicable, Organiser must provide proper sanitary conditions. The showering facilities should be sufficient for both male and female grooms with hot and cold water. Shower facilities as well as restrooms should at all times be in a state of cleanliness.

## **XI. LOGISTICAL/ADMINISTRATIVE/TECHNICAL INFORMATION**

### **1. DRAW**

List of Draws, time, date and location: **24.08.2020 -12.00 Event Office**

### **2. COMPETITION ARENA(S)**

Dressage:

- Dimensions: 20x60m
- Type of Footing: all weather

Cross Country:

- Type of Ground: grass and sand

Jumping:

- Dimensions: 60x90m
- Type of Footing: all weather

### **3. PRACTICE ARENA(S)**

Dimensions: 85x50m  
 Type of Footing: sand  
 Additional practice areas: 100x40m sand

### **4. STABLES**

Size of boxes 3 m x 3 m (80% minimum 3m x 3m+20% 3m x 4m)

### **5. SCORING/TIMING PROVIDER**

Will you use a FEI Certified Service Provider to manage the scoring and timing at your Event?

(The list of certified Service Providers is available here: <https://inside.fei.org/fei/your-role/it-services/it-providers/list>)

Yes ☐

Name of the company: Rechenstelle

FEI Certified Service Provider ID number:

Contact person at Event

Name: Peter Janssen

FEI ID number: 10098496

Contact email: [peter@rechenstelle.de](mailto:peter@rechenstelle.de)

No ☐

Name of the company:

Contact person at Event

Name:

FEI ID number:

Contact email:

The FEI may require to be provided with real time results data feed of your events according to FEI requirements; in this case you and your provider will be informed accordingly.

## 6. OTHER TECHNOLOGY/SERVICE PROVIDER(S)

Will you use other technology/service provider(s) at your Event?

Yes ☐

Name of Company:

Contact person

Name:

FEI ID number (if applicable):

Contact email:

Activity/Function:

(i.e.: Accreditations, Stable Management, Camera system, Sensors, etc...)

No ☐

## 7. PRIZE GIVING CEREMONY

The owner of the winning horse/pony is invited to the prize giving ceremony:

Yes ☐

No ☐

The number of athletes required to present themselves for the prize-giving ceremony of each competition is 5.

Athletes riding their horses: Yes ☒

No ☐

## 8. ADVERTISING ON ATHLETES AND HORSES

At CIEvents, and all competitions except for the Nations Cup, athletes are authorised to carry the logo of their personal sponsor in accordance with article 541 of the FEI Eventing Rules.

**For Championship or CIO Nations Cup Competitions, please specify below.**

Championship: personal sponsor logo

Authorised ☐

Not authorised ☐

Nations Cup Competitions: personal sponsor logo

Authorised ☐

Not authorised ☐

The Chief Steward will check that the advertising on athletes and horses complies with these Articles.

## 9. TICKETING

Are you selling tickets for spectators to attend your event: Yes ☐ No ☒

Name of your ticketing provider:

Web address to buy tickets:

## 10. BETTING

Are you selling tickets for spectators to attend your event: Yes ☒ No ☐

Name of your ticketing provider: Strzegom Horse Trials

Web address to buy tickets: [www.StrzegomHorseTrials.pl](http://www.StrzegomHorseTrials.pl)

## 11. TRANSPORT REIMBURSEMENT HORSES / PONIES

Transport expenses to be paid by:

The Organiser ☐ at per km.

The Athlete ☒

## 12. WELCOME

The time and date of arrival of athletes, horses and their means of transport must be given to the Organiser in order to facilitate their arrival.

## 13. LOCAL TRANSPORTATION - ARRANGEMENTS FROM HOTEL TO SHOWGROUNDS

Walking distance ☒

Organiser Shuttle Service ☐

Public Transport ☐ to be paid by the Organiser ☐ / the Athlete ☒

If paid by Athlete approximate cost per round trip:

Other:

Square for OC to include additional details if necessary

## 14. LORRY / CARAVAN FACILITIES

Lorry or caravan can be parked close to the stables Yes ☒ No ☐

Square for OC to include additional details if necessary

## 15. SUSTAINABILITY

Please consider the environment when organising an FEI Event. Please find useful information on FEI Sustainability here:

<http://inside.fei.org/fei/your-role/organisers/handbook>

## **XII. VETERINARY MATTERS**

### **1. CUSTOMS FORMALITIES**

Contact details for Customs Formalities:

Name:

Address:

Telephone:

Fax:

Email:

Opening hours:

Space for organiser to include details if necessary

### **2. HEALTH REQUIREMENTS**

#### **GENERAL**

In accordance with the FEI Code of Conduct for the Welfare of the Horse it is imperative that all Horses at FEI Events are physically fit and free from infectious disease before being allowed to compete.

#### **ENTRY OF HORSES**

Required health tests and vaccinations:

Quarantine period:

Specimen Import Licence applied:

Space for organiser to include details if necessary

### **3. NATIONAL REQUIREMENTS**

If applicable please provide:

Space for organiser to include details if necessary

### **4. PONIES**

FEI Veterinary Regulations, Chapter IX and Annex X: For all Pony Events, Ponies must be available for Pony Measurement if requested by the FEI.

### **5. INJURY SURVEILLANCE**

FEI Veterinary Regulations, Chapter VIII: Horses participating in FEI Events are subject to injury surveillance protocols; and in the event of fatality, a post mortem examination.

## 6. TRANSPORT OF HORSES

Horses must be fit to travel and be transported in suitable vehicles for the transport of horses. Any government requirements for disease testing and control must be requested well in advance, to ensure that the horse is in compliance by the time of arrival at the border of the country where the Event is taking place. Athletes, or their representatives, have the responsibility to comply with national legislation in both their country of origin and the host nation of the Event. Where necessary athletes must contact local government authorities or veterinary advisors for information regarding animal health requirements and transport legislation. Within the European Union (EU), this includes EU Council Regulation (EC) No 1/2005 concerning the protection of animals during transport within the Member States of the EU.

## 7. VENUE ARRIVAL INFORMATION & FITNESS TO COMPETE

### 7.1. PASSPORTS. FEI General Regulations Article 137

**For all issues relating to FEI Horse Passports/FEI Recognition Cards please contact your National Federation.**

All Horses competing at FEI Events must be registered with the FEI.

FEI Passports or FEI Recognition Cards (for those Horses with a national passport approved by the FEI) are compulsory for FEI Events.

NB: Horses entered in CIMS and in CSIP in their country of residence are not required to have an FEI Passport or FEI Recognition Card but must be properly registered with the FEI and identifiable (GRs 137.2).

Athletes who do not present a Horse's Passport and/or Recognition Card, or one that is not correctly validated or fail to meet other passport requirements will be **subject to Sanctions in accordance with Annex VI of the FEI Veterinary Regulations** and may not be allowed to compete.

**NB** for Horses permanently resident in a Member State of the European Union: all Horses must have a national EU passport in compliance with EU Regulations to which a FEI Recognition card is applied. The exception to this being Horses in possession of an FEI passport which has been continually revalidated without interruption.

### 7.2. VACCINATIONS - EQUINE INFLUENZA. FEI Veterinary Regulations Article 1003

Horses competing at FEI Events must comply with the requirements for Equine Influenza vaccination in accordance with the Veterinary Regulations and as summarised below.

VACCINATION	PROTOCOL	ELIGIBILITY TO ENTER VENUE
<b>Primary Course</b>	1 <sup>st</sup> Vaccination: day 0 2 <sup>nd</sup> Vaccination: day 21-92	May compete 7 days after the 2 <sup>nd</sup> Vaccination
<b>First Booster</b>	Within 7 months of the 2 <sup>nd</sup> vaccination of the Primary Course	May compete for 6 months +21 days after the 2 <sup>nd</sup> vaccination of the Primary Course Must not compete in the 7 days after receiving a vaccination
<b>Boosters</b>	<b>MINIMUM:</b> within one year of previous booster vaccination <b>IF COMPETING:</b> must be in the 6 months +21 days of the booster previous vaccination	Must have been vaccinated within 6 months +21 days before arriving at the Event Must not compete in the 7 days after receiving a vaccination

All FEI registered Horses intending to compete at FEI Events (including CIMs) must be vaccinated against Equine Influenza in accordance with these VRs. The exception being if the applicable domestic legislation prevents the use of Equine Influenza vaccines within the relevant territory.

### **7.3. EXAMINATION ON ARRIVAL. FEI Veterinary Regulations Article 1031**

On arrival at an Event venue, all Horses must undergo an examination by a veterinarian to confirm their identification from their passport and micro-chipID (where present), their vaccination status and general health. To protect all horses attending events, any Horse with a questionable health status concerning vaccination, disease or other concerns, must be stabled within the isolation facilities provided by the Organising Committee pending a decision on entering the venue.

### **7.4. HORSE INSPECTIONS. FEI Veterinary Regulations Articles 1034-1042**

All Horses will be assessed for their fitness to compete during the Horse Inspection. Any Horse demonstrating questionable fitness may be referred to the Holding Box for further veterinary examination. Horses not deemed fit to compete by the Inspection Panel will not be permitted to compete.

### **7.5. LIMB SENSITIVITY EXAMINATION. FEI Veterinary Regulations Articles 1048-1053**

All Horses are subject to examination under the protocol for abnormal limb sensitivity throughout the period of an Event. For Jumping that includes, but is not limited to, between rounds and before the Jump Off. For Endurance that includes, but is not limited to, pre-ride, during the ride and after the ride. Horses may be examined once or on multiple occasions during the Period of an Event. Horses may be selected for examination under the protocol randomly or they may be targeted. All Horses selected to be tested must submit promptly to the examination or are subject to immediate disqualification. There is no obligation to examine any specific number of Horses at an Event.

## **8. EQUINE ANTI-DOPING AND CONTROLLED MEDICATION PROGRAMME (EADCMP). FEI VETERINARY REGULATIONS, CHAPTER VII**

### **8.1. SAMPLING. FEI VETERINARY REGULATIONS CHAPTER VII**

All horses competing at FEI Events may be subject to sampling for the presence of Prohibited Substances in accordance with the Anti-Doping and Controlled Medication Regulations (EADCMRs). Horses may be selected for sampling in accordance with obligatory testing, targeted or random sampling procedures. Refer to FEI Financial Charges for details of fees relating to Equine and Human Anti-Doping program (EADCMP), which OCs/NFs have the right to charge to the athlete (applicable for all FEI events worldwide).

### **8.2. ELECTIVE TESTING. FEI VETERINARY REGULATIONS ARTICLES 1057 AND 1058**

Elective Testing may be carried out prior to an Event to check for the presence of Prohibited Substances. Please refer to <https://inside.fei.org/fei/cleansport/horses> for information and details.

### **XIII. HUMAN ANTI-DOPING**

Athletes can be tested at any FEI Event, by the FEI or by other Anti-Doping Organisations with Testing jurisdiction. Organisers will have the responsibility to provide facilities and staff/volunteers to facilitate such Testing if requested by the FEI as outlined in article 22.3 of the FEIs' Anti-doping Rules for Human Athletes (ADRHA).

The ADRHA rules are published on the FEI's website at <http://inside.fei.org/content/anti-doping-rules>.

### **XIV. ADDITIONAL INFORMATION**

#### **1. THE FEI POLICY FOR ENHANCED COMPETITION SAFETY DURING THE COVID-19 PANDEMIC**

The FEI Policy for Enhanced Competition Safety during the Covid-19 Pandemic ("Policy") (<https://inside.fei.org/fei/covid-19/return-to-play/policy-tools>) is mandatory and applies for any FEI Event taking place **as of 1 July 2020**. The Policy has been developed based on currently accepted best practices by the WHO and US Center for Disease Control (CDC) and will be continually reviewed and updated as more information becomes available. It is not intended to replace the applicable guidance and policies from domestic government and health authorities, but to supplement their recommendations with sport specific considerations.

The OC shall submit the risk assessment and mitigation plan (including name and contact details of the person in charge) to the FEI as an annex to the Event Schedule, **at the latest ten (10) working days before the event's deadline for Definite Entries**.

Events for which the FEI has not received the documented risk assessment and mitigation measures plan in accordance with article 2.1.g) of the Policy **will be removed from the FEI calendar** in accordance with Article 112.3 of the FEI General Regulations.

#### **ASSUMPTION OF RISK / WAIVER OF LIABILITY**

In consideration of being allowed to participate in the Event and related activities, all Participants (as defined in the Policy) acknowledge, appreciate, and agree that:

1. Participation includes possible exposure to and illness from infectious diseases including but not limited to COVID-19. While particular rules and personal discipline may reduce this risk, the risk of serious illness and death does exist; and,
2. The Participants knowingly and freely assume all such risks, both known and unknown, even if arising from the negligence of the OC or others, and assume full responsibility for their participation; and,
3. The Participants willingly agree to comply with the stated and customary terms and conditions for participation as regards protection against infectious diseases. If, however, a Participant observes any unusual or significant hazard during his/her presence or participation, the Participant will remove himself/herself from participation and bring such to the attention of the nearest official immediately; and,
4. The Participants, for themselves and on behalf of their heirs, assigns, personal representatives and next of kin, HEREBY RELEASE AND HOLD HARMLESS THE OC AND THE FEI, their officers, officials, agents, and/or employees, other participants, sponsoring agencies, sponsors, advertisers, and if applicable, owners and lessors of

premises used to conduct the event ("RELEASEES"), WITH RESPECT TO ANY AND ALL ILLNESS, DISABILITY, DEATH, or loss or damage to person or property, WHETHER ARISING FROM THE NEGLIGENCE OF RELEASEES OR OTHERWISE, to the fullest extent permitted by law.

The Participants confirm to have read this release of liability and assumption of risk agreement, fully understand its terms, understand that they have given up substantial rights.

## **2. MEDICAL INFORMATION FORM FOR ARMBANDS**

### Declaration of medical condition

Athletes with medical conditions that may be relevant in the case of a medical emergency are responsible, at every Event when riding, for wearing a medical data carrier\* from a system provider able to communicate information at least in English. Alternatively (and at the minimum) a medical armband of good quality can be used. Athletes who chose to wear an armband should download and fill the form available for this purpose on the FEI's website <http://inside.fei.org/fei/your-role/officials/eventing/forms>.

*\* Medical data carrier (also called "medical identification tag"): small emblem or tag worn on a bracelet, neck chain, or on the clothing, intended to alert paramedics/physicians/ first responders that the wearer has an important medical condition.*

Conditions that are relevant include recent head injury, serious past injuries/surgery, chronic health problems such as diabetes, long-term medications and allergies. If in doubt, the athlete should discuss this with his own treating physician."

## **3. INSURANCES AND NATIONAL REQUIREMENTS**

Equestrian sports involve inherent dangerous risks. To the greatest extent permitted by law, the FEI and the FEI Event Organiser shall NOT be liable for any damages relating to loss of property or injury of any kind to Athletes, Owners, Support Personnel or Horses at or in connection with an FEI Event and the FEI expressly excludes all such liability.

### **3.1. ATHLETES, OWNERS AND SUPPORT PERSONNEL**

#### **3.1.1. Personal Accident and Health Insurance**

It is your responsibility as an Athlete/Owner/ Support Personnel to ensure that you have adequate personal accident insurance in place to cover your participation at FEI Events and in particular to insure against any personal injury or medical expenses arising from an accident, injury or illness which may occur at a FEI Event.

You should check with your National Federation to confirm if your National Federation's insurance policy (if any) covers personal accidents and/or illnesses, which may occur when you are attending at/participating in FEI Events.

If your National Federation does not have a personal accident/health insurance policy or if the National Federation's insurance policy does not cover personal accident or health claims, then you should obtain your own personal accident and health insurance policy to cover your attendance/participation at FEI Events.

#### **3.1.2. Press Equipment**

Press equipment and other items left in the Press workroom, Press lockers, the Press Tribune or anywhere on the showgrounds are left entirely at the owner's risk. The Organising Committee does not accept any responsibility for any loss or damage to such equipment or items. Members of the Press are advised not to leave any equipment or personal items

unattended.

### **3.1.3. Personal Property Insurance**

You should also ensure that you are insured against property loss, theft or damage, which may occur at an FEI Event.

Again, the advice is to check with your National Federation to confirm if they have an insurance policy in place, which would cover you in case of such property loss, theft or damage. If not, then you should obtain your own personal property insurance to cover such situations.

## **3.2. ATHLETES AND OWNERS**

### **3.2.1. Third Party Liability Insurance**

As an Athlete/Owner you are personally responsible for damages to third parties caused by you, your employees, Support Personnel, your agents or your Horses. You are, therefore, strongly advised to take out third-party liability insurance providing full coverage in relation to FEI Events at home and abroad, and to keep the policy up to date.

The FEI and the Organiser will NOT be responsible for any damage caused to third parties by you, your employees, Support Personnel, your agents or your Horses.

### **3.2.2. Additional Liability Information**

Space for OC's to include reference to National Laws when necessary

### **3.2.3. Horse Insurance**

As an Owner you should ensure that your Horses are adequately insured against any injuries or illnesses they may sustain while participating at a FEI Event.

Space for OC's to include reference to National Laws when necessary

## **4. PROTESTS/APPEALS**

To be valid, all Protests and Appeals must be made in writing and accompanied by a deposit of CHF 150.- or equivalent.

Protest and appeal forms are available on the FEI website:

Protests: <https://inside.fei.org/sites/default/files/FEI%20Protest%20Form.pdf>

Appeals: <https://inside.fei.org/sites/default/files/FEI%20Appeal%20Form.pdf>

## **5. DISPUTES**

In the event of any discussion concerning the interpretation of the schedule (in translated languages), the English version will be decisive.

## **6. MODIFICATION TO SCHEDULE**

In exceptional circumstances, together with the approval of Chefs d'Equipe, host NF delegate, if any, and the Ground Jury, the Organiser may change the schedule in order to clarify any matter arising from an omission or due to unforeseen circumstances. Any such changes must be notified to all athletes and officials as soon as possible and they must be reported to the FEI Secretary General by the Technical Delegate.

## 7. ADDITIONAL INFORMATION FROM THE ORGANISER

Square for organiser to include details if necessary, such as: National Rules, Dogs or Vehicles.

## 8. MINIMUM AGE LIMITATION

LEVEL	ATHLETES	HORSES
1*	12	5
2*	14	6
3*	16	6
4*	18	7
5* + CH4*	18	8

## 9. PRIZEMONEY DISTRIBUTION

### **IMPORTANT**

**The total amount of prize money shown for each Competition in the schedule must be distributed. (FEI General Regulations articles 127 and 128)**

The value of the 1<sup>st</sup> prize must not exceed 1/3 of the total prize money distributed for the competition. The minimum number of prizes offered for each competition must be allocated on the basis of one prize for every commenced four Athletes, with a minimum of five prizes.

### **DEDUCTIONS FROM PRIZE MONEY AT COMPETITIONS:**

Full details of any deductions from prize money must be outlined in the schedule. This includes government taxes. If it is necessary for Organisers to deduct such taxes, they **must** provide participants with an official form indicating the amount of tax deducted.

**The tax form must be provided to the athletes upon arrival and returned to the Organiser prior to departing.**

Space for organiser to include details if necessary

## XV. ANNEXES

### 1. FEI ENTRY SYSTEM

Please fill the form below in order to provide you and the other members of your committee or your IT Providers access to the FEI Entry System.

**FEI ID<sup>1</sup>:** 10004896  
**Name\*:** Konarski  
**First Name\*:** Marcin  
**E-Mail\*:** office@stragona.pl  
**Access Rights\*:** Admin<sup>2</sup>☒ Consult<sup>3</sup>☐  
**Events<sup>4</sup>:** ALL

**FEI ID<sup>1</sup>:** 10098496  
**Name\*:** Janssen  
**First Name\*:** Peter  
**E-Mail\*:** peter@rechenstelle.de  
**Access Rights\*:** Admin<sup>2</sup>☒ Consult<sup>3</sup>☐  
**Events<sup>4</sup>:** All

**FEI ID<sup>1</sup>:** 10135806  
**Name\*:** Nothofer  
**First Name\*:** Theo  
**E-Mail\*:** theo@rechenstelle.de  
**Access Rights\*:** Admin<sup>2</sup>☒ Consult<sup>3</sup>☐  
**Events<sup>4</sup>:**

<sup>1</sup> If already have an FEI user account.

<sup>2</sup> Provides you the required access to manage entries and substitutions and download entries/lists.

<sup>3</sup> You are just able to consult and download the entries/lists.

<sup>4</sup> Leave the field blank if the user deals with the entries of all events in the show.

**\* Mandatory Fields**

## 2. RESULTS

In order to proceed with the results publication and for qualification purposes the FEI requires results **to be uploaded directly on the FEI Database** within four days after the conclusion of the event. All relevant information, file format and tutorial can be found on this page:

<https://inside.fei.org/fei/your-role/it-services/results/eventing-results-forms>

If you or your provider are unable to produce the required files, results will be accepted by e-mail to **eventingresults@fei.org**, in the proper Excel or "XML" format immediately after the event. Please refer to compulsory format for CIs/CIOs/Championships and Games; the file can be downloaded using the following link:

<http://inside.fei.org/fei/your-role/organisers/xml-format>

**All results must include FEI Passport Registration number of horses and FEI ID number of Riders.**

Please note that as per Art. 109.6 (GR):OCs of International Events must inform the FEI and NFs whose teams or individuals have taken part, of the results and prize money paid to each placed Athlete and team, within five (5) days following the Event, unless otherwise specified for qualification and ranking reasons as communicated by the FEI. Failure from OCs of International Events to provide the FEI with the appropriate result(s) and/or prize money information by the aforesaid deadline and/or in the aforesaid format shall entail a warning for the first violation and thereafter a fine of CHF 1'000.- per violation.

## 3. STEWARDING (Only for Jumping test of the Eventing competition, as per FEI Jumping rules)

- If an athlete is uncertain as to whether the boots he/she intends to use during an event are allowed, he/she or his/her representative should show the boots to the Chief Steward for his/her opinion before the boots are used in training or in competition.
- In addition, athletes are to be made aware that hind boots must be removed and placed again on the horse's legs in the presence of a Steward while in the warm-up arena prior to entering the competition arena for certain competitions. (If bandages are used in place of boots, athletes are not required to remove the bandages in the warm-up arena.) This procedure is compulsory for competitions for which boot and bandage control is mandatory, that is the Nations Cup, Championships, and the competition with the highest prize money, and is at the discretion of the Chief Steward for other competitions.
- As an alternative to carrying out this procedure at the time designated by the Steward an athlete may ask his/her groom to take the boots to the in-gate and place them on the horse's legs in front of the Steward prior to the combination entering the arena.
- The Steward has the authority to intervene if a boot is deemed excessively tight by instructing that the boot be removed and put on again correctly. *[Stewards are to note that it is normal for a horse's gait to be somewhat affected immediately after boots have been removed and re-placed.]* If an athlete or his/her groom refuses to remove and re-place the boot(s) when instructed to do so by the Steward, a Yellow Warning Card will be issued to the athlete in question.
- If it is deemed impossible or unsafe to remove the hind boots in the warm-up arena prior to the combination entering the competition arena, due to an extremely excited or nervous horse, the boots of the horse in question are to be removed by the athlete/groom following the athlete's round upon leaving the arena and inspected by the Steward. This inspection may be carried out during the boot and bandage control if the boot and bandage control is carried out for the competition in question.
- This procedure does not replace boot and bandage control after completion of an athlete's round for competitions for which boot and bandage control is mandatory (refer to JRs Art. 244.1)